

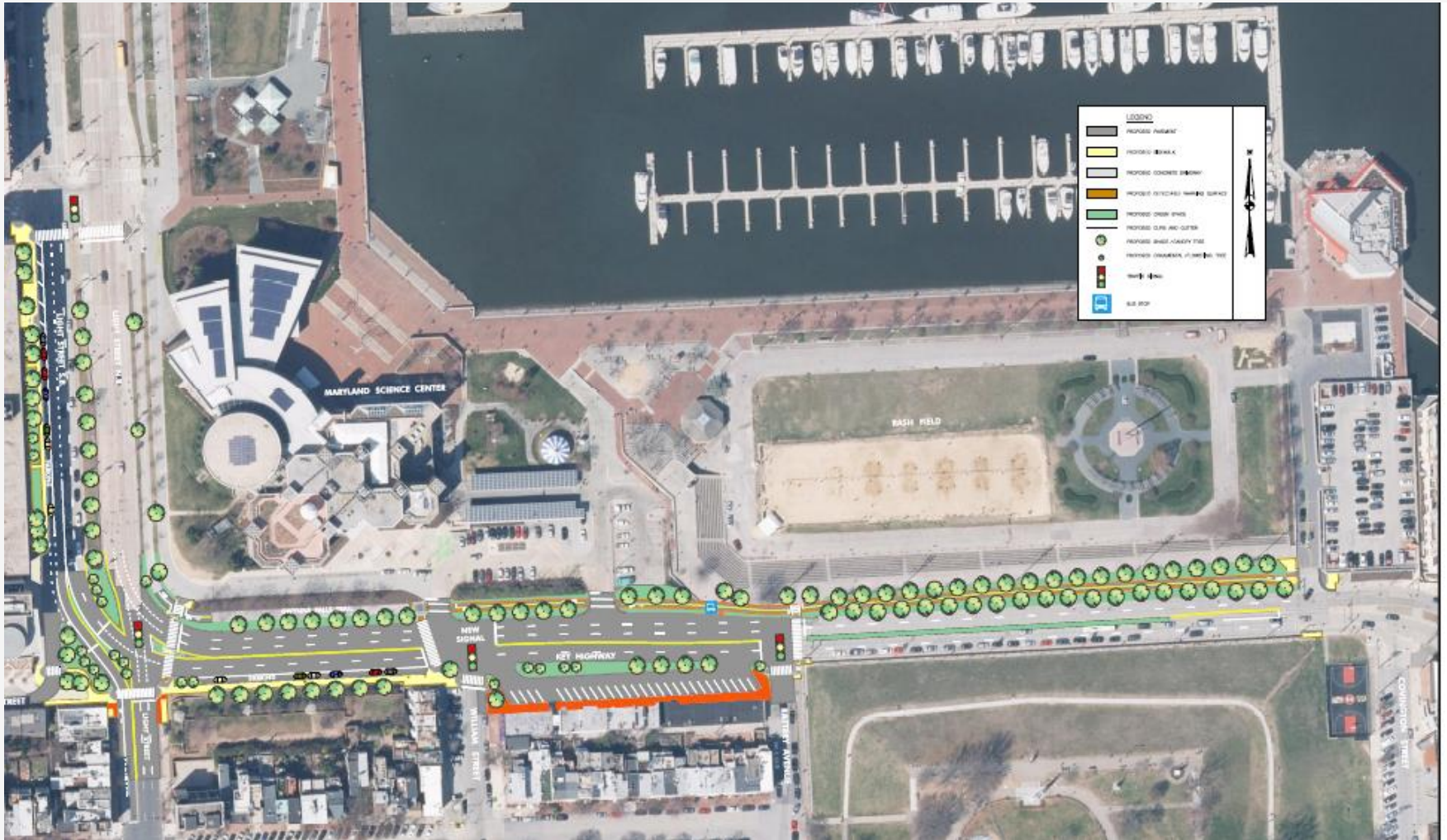


KEY HIGHWAY AT LIGHT STREET

INTERSECTION IMPROVEMENTS

June 2016

- 95% Design Level
- Refinement of Design Elements
- Environmental and Park Coordination
- Utility Coordination



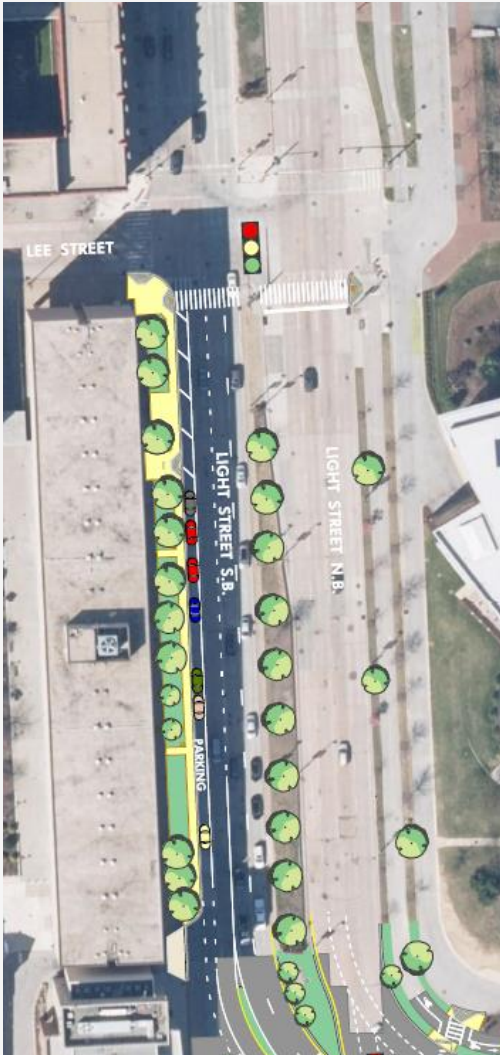
KEY HIGHWAY AT LIGHT STREET

INTERSECTION IMPROVEMENTS

Overall Scope of Improvements

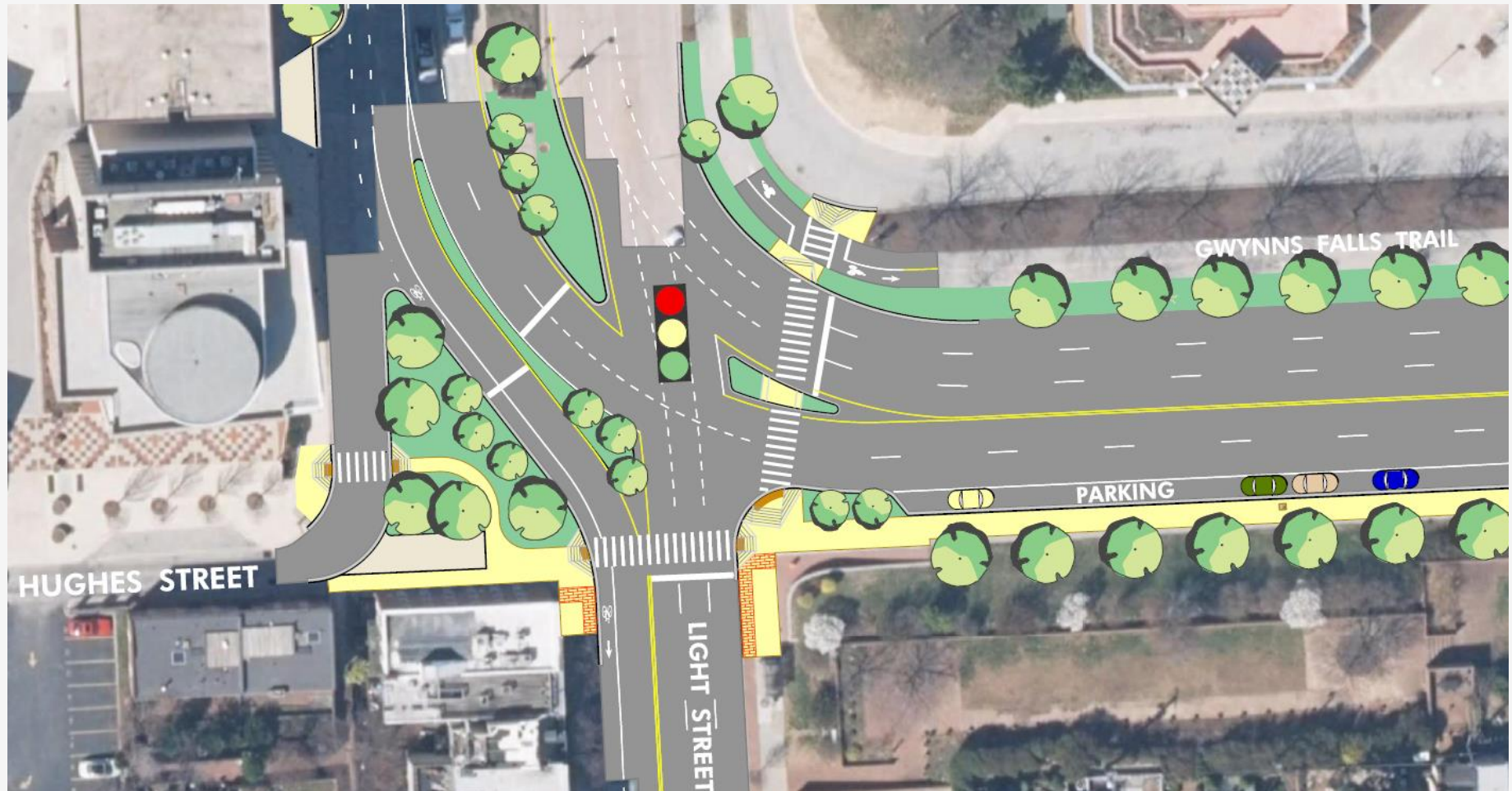
- Full Depth Roadway Reconstruction with Complete Rail Track Removal
- Concrete Roadway Repairs
- Installation of New Traffic Signals:
 - Key Highway @ Light Street
 - Key Highway @ William Street
- New Signing and Pavement Markings
- Storm Drain Improvements, Stormwater Management
- Increase to the Capacity of Existing Conduit System
- Replacement of Water Line
- Landscaping, Sidewalk & ADA Upgrades, Gwynns Falls Trail Extension

Light Street at Lee Street



- Full Length Bumpout along the west side of Light Street
- Lane Configuration Change – Light Street Southbound
 - Right Turn Movement onto Lee Street
 - Southbound Continuation into Federal Hill
 - Right Turn Movement onto Hughes Street
- Landscaping

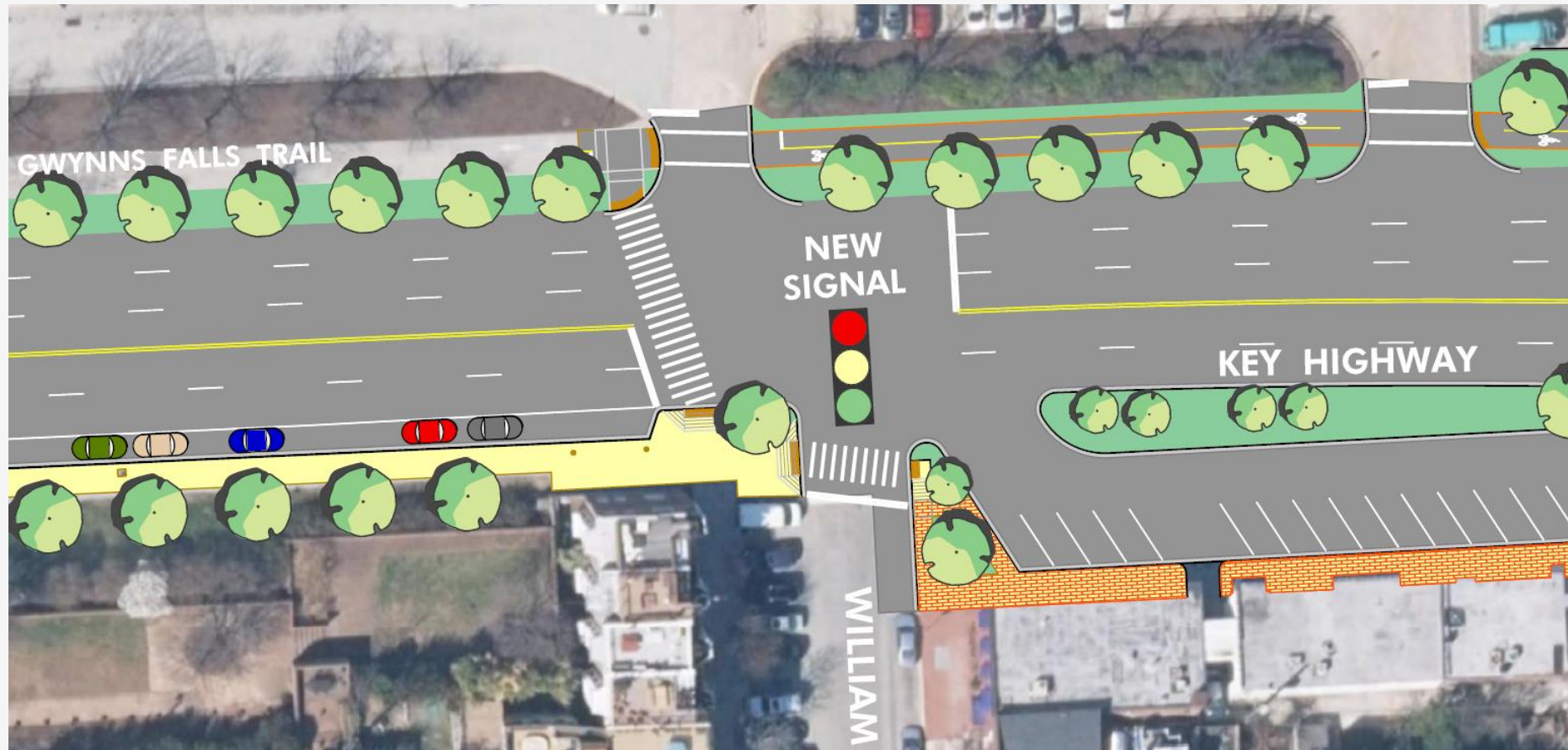
Key Highway at Light Street



KEY HIGHWAY AT LIGHT STREET

INTERSECTION IMPROVEMENTS

Key Highway at William Street



KEY HIGHWAY AT LIGHT STREET

INTERSECTION IMPROVEMENTS

Key Highway at Battery Avenue



KEY HIGHWAY AT LIGHT STREET

INTERSECTION IMPROVEMENTS

Gwynns Falls Trail Extension



- Gwynns Falls Trail Extension from William Street to Covington Street
- Removal of Existing Berm between Key Highway and Rash Field
- Installation of New Median along Key Highway from Battery Avenue to Covington Street



KEY HIGHWAY AT LIGHT STREET

INTERSECTION IMPROVEMENTS

- PS&E Submission.....May 2016
- Final Approvals.....Summer 2016
- Advertisement.....Late Summer 2016
- Construction.....Late Fall 2016

Schedule is subject to change based on unforeseen events

Grishae Blackett'e

Southeast Transportation Liaison • Planning Division

City of Baltimore • Department of Transportation

443-984-4095

Grishae.Blackette@baltimorecity.gov

www.baltimorecity.gov/transportation/planning