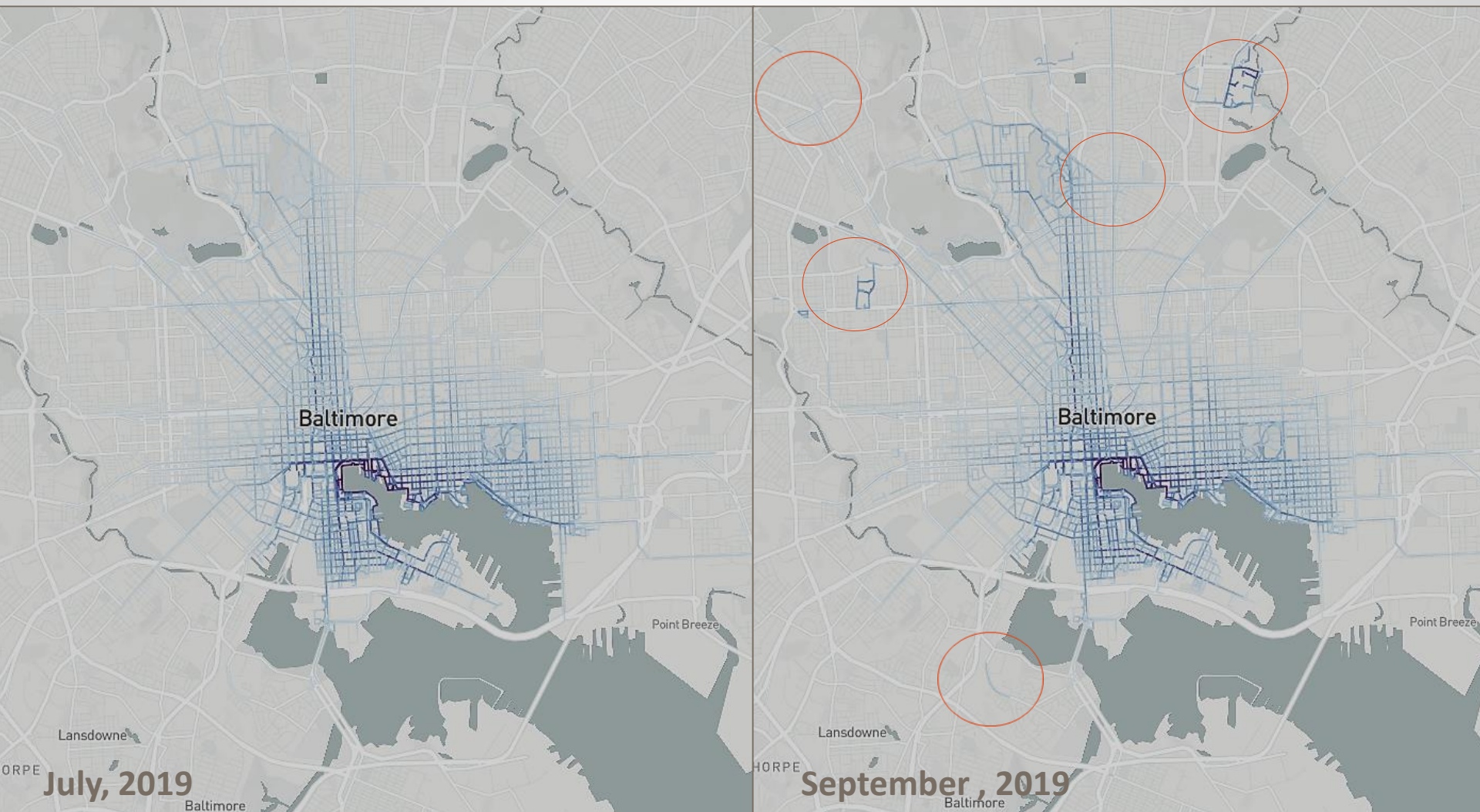


# Dockless Vehicle Committee

October 9, 2019



## **Dockless Vehicle Evaluation**

### **Milestones:**

- August 1 - Permit Period began
- Quarterly Changes: November 1, February 1, May 1

### **DVC monthly Tasks:**

- Assist with ongoing monitoring
- Nominate safety messages
- Highlight community events

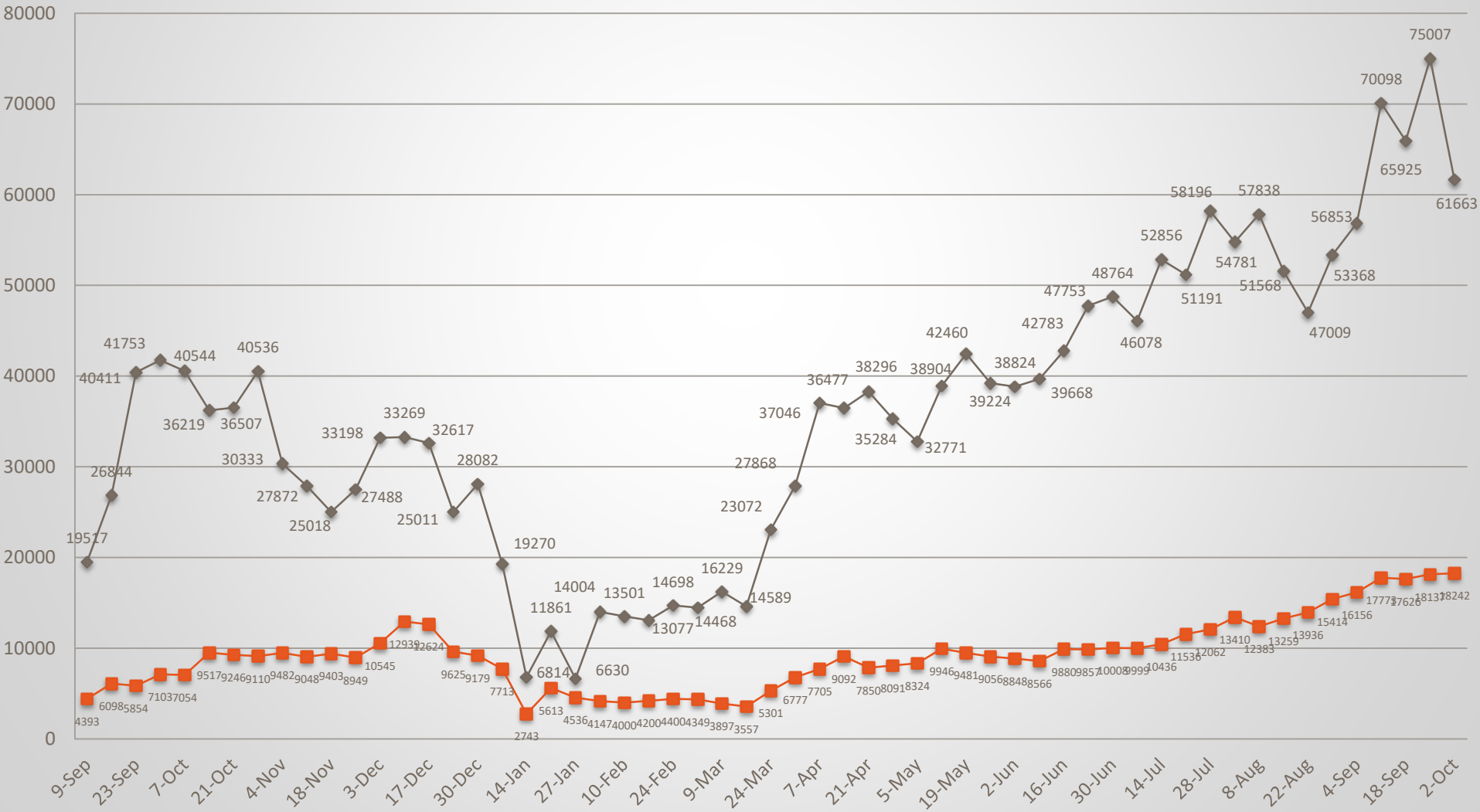
### **DVC as-needed tasks:**

- Safety campaign
- Maintenance items
- Corral evaluation

# Data

## Weekly Dockless Rides & Vehicles Released

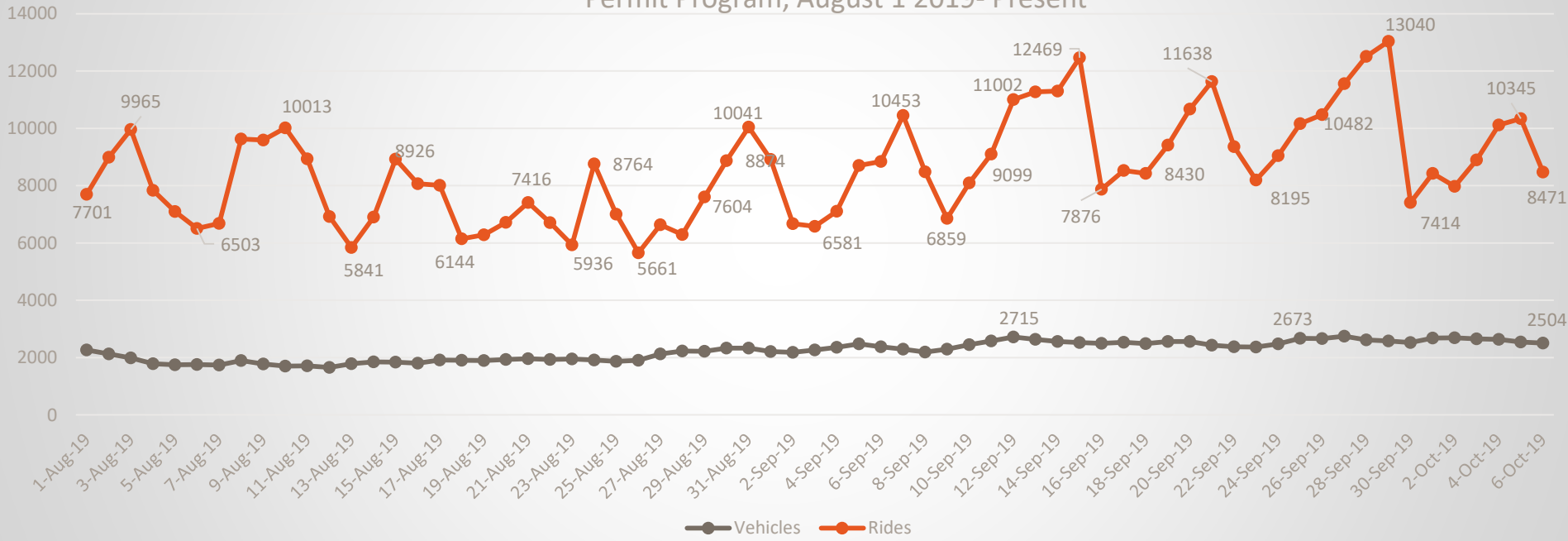
- Rides
- Vehicles



# Data

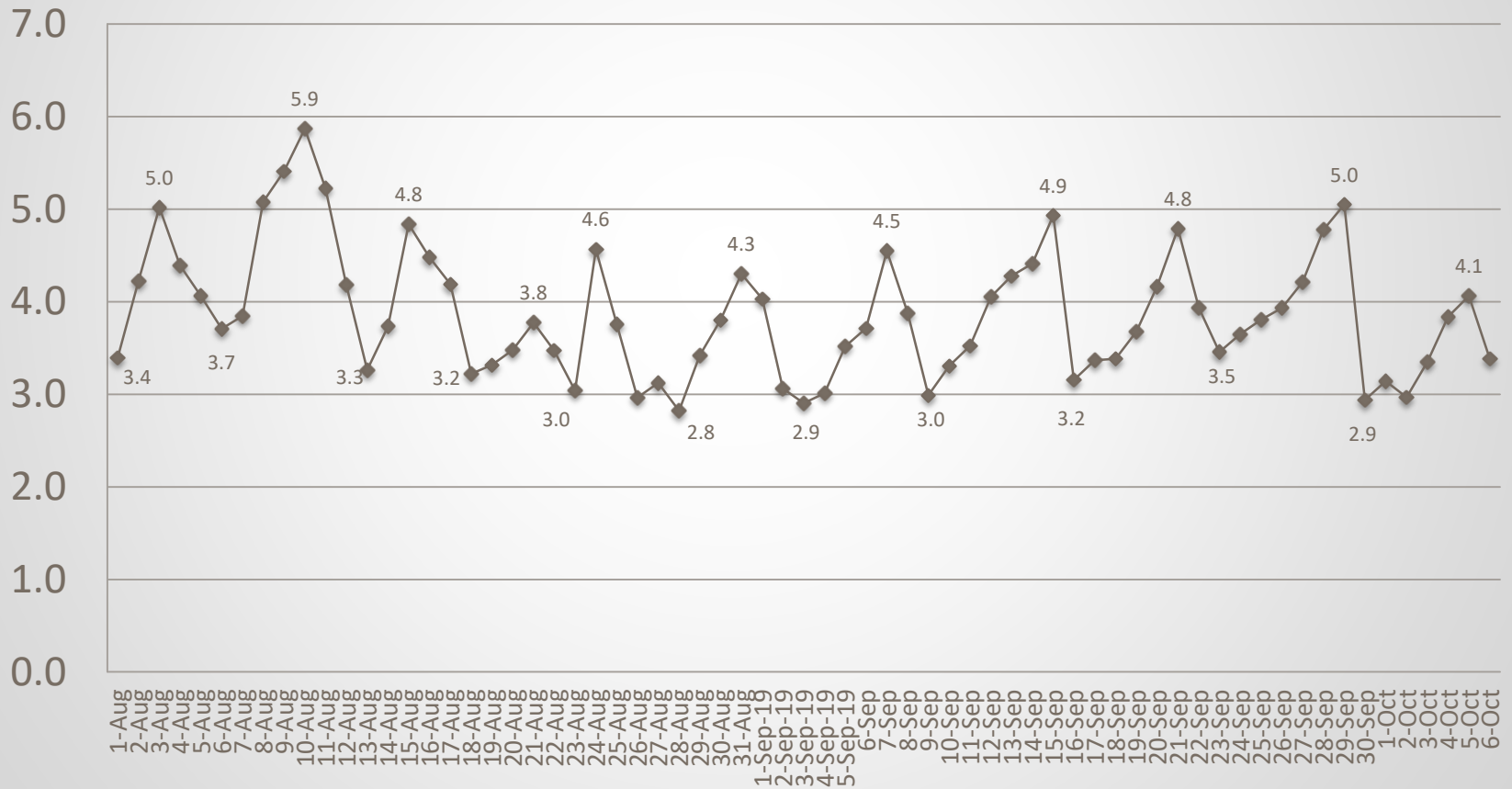
## Daily Dockless Vehicles Deployed and Rides

Permit Program, August 1 2019- Present



# Data

## Rides per Vehicle per Day



## Data

### Equity Zone Daily Patterns – September 1-30, 2019

Equity Zones	Average Vehicles*	Average Trips Originating per Day	Zone Utilization**	Average Trips Ending per Day
<b>1 Rogers Avenue Metro</b>	5.1	4.5	0.9	2.0
2 Reisterstown Plaza	5.6	6.1	1.1	4.4
3 Park Heights at Belvedere	10.3	4.8	0.5	2.1
4 York Road at Bellona	3.6	2.4	0.7	1.0
5 33rd at Greenmount	7.1	9.6	1.3	6.9
6 Harford at Hamilton	4.1	2.4	0.6	0.9
7 Harford at Coldspring	5.8	3.0	0.5	1.5
8 Belair Edison Main Street	4.2	3.8	0.9	2.2
9 North Ave at Harford Rd	4.9	4.7	1.0	2.0
10 Northeast Market	4.9	6.8	1.4	5.0
11 Library Square	4.9	6.7	1.4	3.8
<b>12 Cherry Hill Light Rail Station</b>	<b>8.0</b>	<b>5.8</b>	<b>0.7</b>	<b>2.1</b>
13 Patapsco Ave	6.1	3.1	0.5	1.4
14 Hollins Market	5.7	6.0	1.1	3.3
15 Washington Blvd	6.2	2.6	0.4	1.8
16 Westside Shopping Center	4.9	2.8	0.6	0.9
<b>17 West Baltimore MARC</b>	<b>9.0</b>	<b>7.4</b>	<b>0.8</b>	<b>2.1</b>
18 McCulloh at Preston	4.6	7.9	1.7	7.2
<b>19 Upton Metro</b>	<b>5.6</b>	<b>5.5</b>	<b>1.0</b>	<b>2.8</b>
<b>20 Penn-North</b>	<b>7.1</b>	<b>7.3</b>	<b>1.0</b>	<b>3.7</b>

\*Vehicle Counts only count those “deployed” that morning and may not reflect the total vehicles present

\*\*Zone Utilization = Average Trips Originating per Day / Average Vehicles

Bold denotes MTA-partnered equity zone

## Data

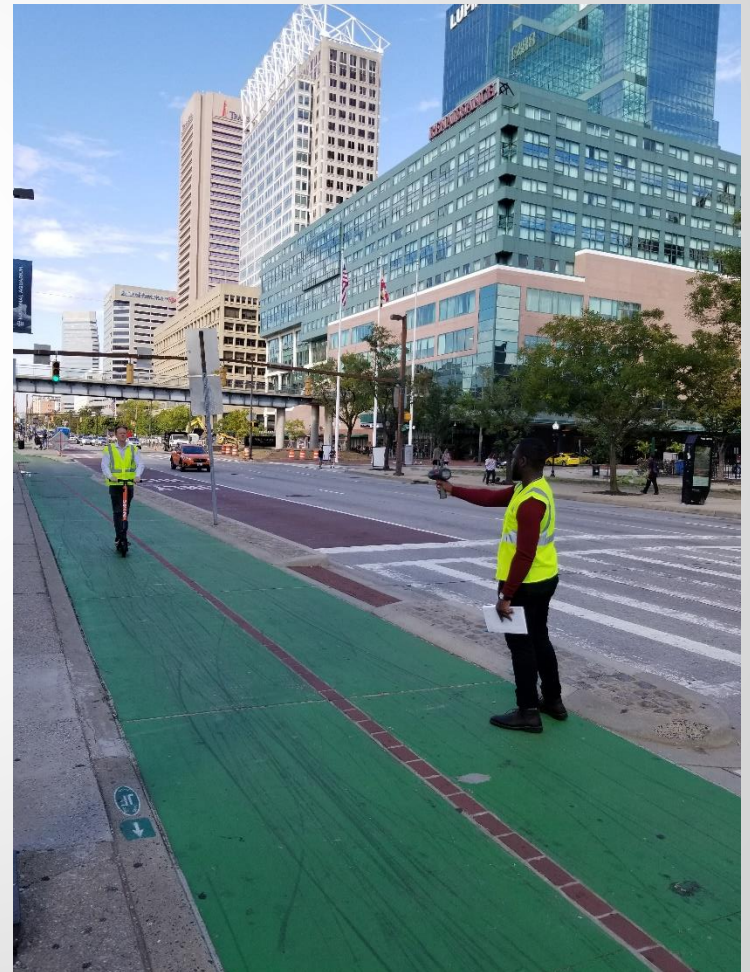
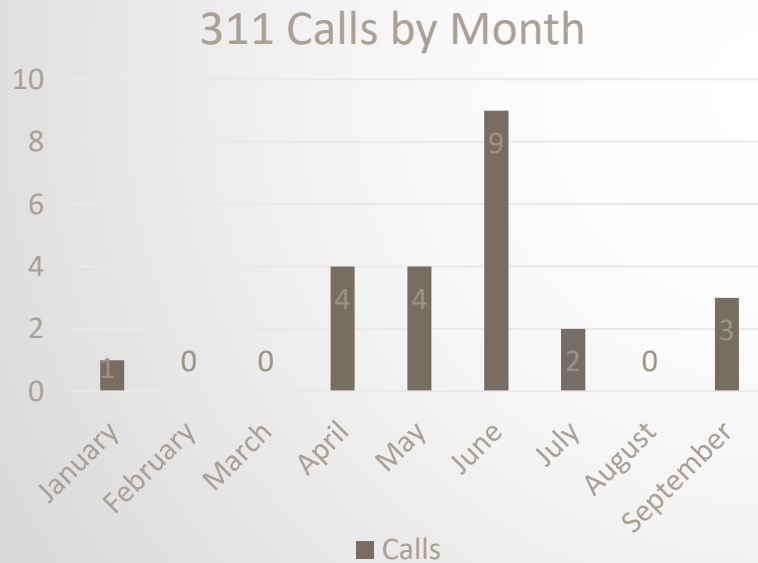
### Equity Zones Patterns - September

Equity Zones	Average Vehicles	Average Trips Originating per Day	Zone Utilization	Average Trips Ending per Day
<b>1 Rogers Avenue Metro</b>	5.1	4.5	0.9	2.0
Nearby Frequent Destinations:				
<ul style="list-style-type: none"> <li>• Wabash at Coldspring</li> <li>• Belvedere at St Charles Ave</li> </ul>				
<b>12 Cherry Hill Light Rail Station</b>	8.0	5.8	0.7	2.1
Nearby Frequent Destinations:				
<ul style="list-style-type: none"> <li>• Seamon Ave Apartments (3 daily trips)</li> <li>• Shellbanks at Giles Apartments (4 daily trips)</li> </ul>				
<b>17 West Baltimore MARC</b>	9.0	7.4	0.8	2.1
Nearby Frequent Destinations:				
<ul style="list-style-type: none"> <li>• Bon Secours Hospital</li> <li>• Bon Secours Smallwood Summit (apartment Building and bus stop)</li> <li>• Booth at Small wood</li> <li>• Fulton at Edmonson (bus stops?)</li> </ul>				
<b>19 Upton Metro</b>	5.6	5.5	1.0	2.8
Nearby Frequent Destinations:				
<ul style="list-style-type: none"> <li>• McMechen at Park Ave and Bolton Hill</li> <li>• State Center Metro</li> <li>• Midtown- Belvedere</li> </ul>				
<b>20 Penn-North</b>	7.1	7.3	1.0	3.7
Nearby Frequent Destinations:				
<ul style="list-style-type: none"> <li>• Coppin State</li> <li>• Mondawmin</li> <li>• Coppin Heights Development Center</li> <li>• Whitelock at Park</li> </ul>				

# Updates

## Miscellaneous Updates

- First Vehicle Inspections and Parking Response Checks: week of 9/23
- Next Inspections and Checks Scheduled: week of 10/14
- 311 Calls by month, 20 YTD





## Action Items

### Safety Messaging

#### Educational Cards DRAFT:

##### How to Ride an E-scooter Legally and Safely:

- Ride in the street-- to the right or in a bikelane when possible
- Only ride on the sidewalk for safety if the road is HIGH speed
- Yield to people walking on the sidewalk or in crosswalks
- Give people 3 feet of space when passing
- Limit one person per vehicle
- Do not bring a vehicle on a bus, light rail or Metro
- Obey all traffic signs and signals

Share the Road!



##### How to Park an E-scooter Legally and Courteously:

- Park on the sidewalk, but leave at least 4 feet of space
- Do not block any ramps, driveways, or doors
- Do not block any bus stops or fire hydrants
- Park next to a bike rack if possible



Share the Road!



*If any other organization would like cards to distribute, please email me.*

## Action Items

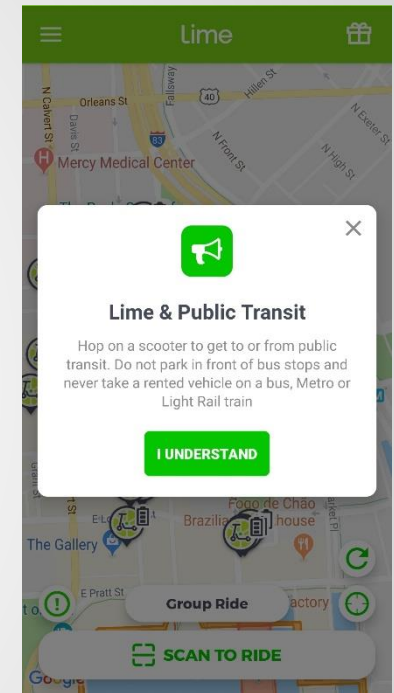
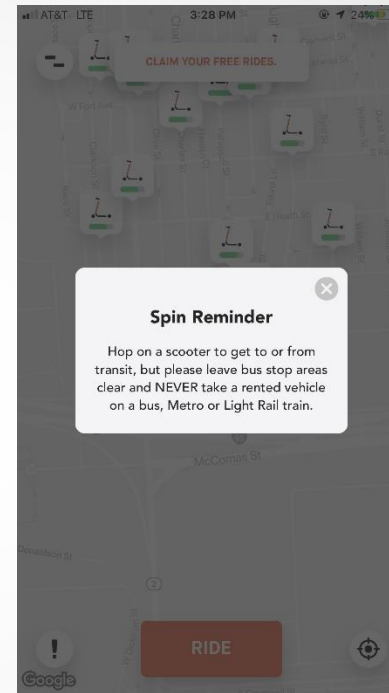
### Safety Messaging

#### Monthly messaging October:

If you've been drinking, don't endanger yourself or others: get a safe ride home. You can be charged with a DUI while operating any vehicle, including a bike or scooter.

#### November options for discussion:

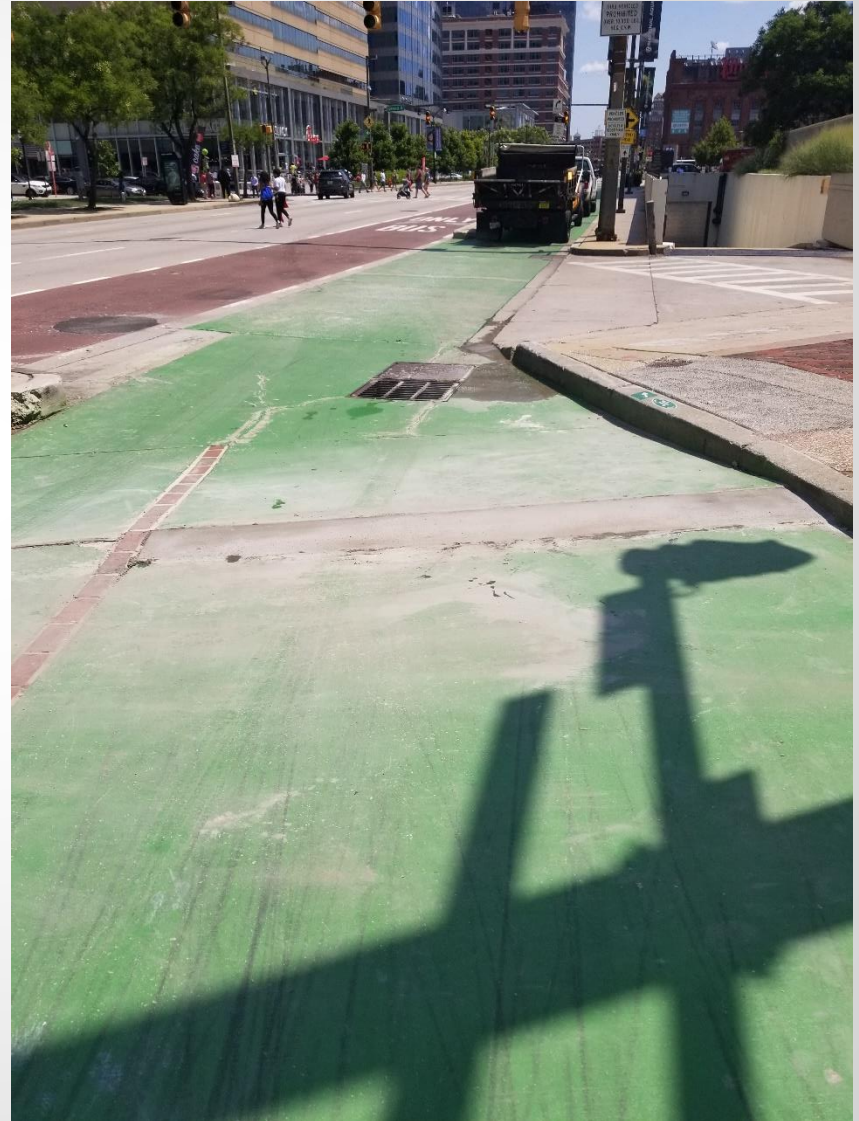
1. Give people 3 feet of space when passing and let them know you are there. Try saying "passing on your left/right" to give them warning.
2. When on a scooter, ride in a bike lane when available or in the right hand travel lane. Sidewalk riding is only permitted next to high speed roadways.
3. Share the road! Always look out for people and vehicles coming from any direction. Ride predictably and follow traffic laws for your own safety.



## Action Items

### Maintenance Items

- **Safety issues**
  - Potholes
  - Missing flex posts
  - Updating signage
- **Corrals**
  - First corrals will be equity corrals
    - MDOT/MTA locations first
  - Building stakeholder lists for others



## Action Items

### Outline Q1 Report: November 1, 2019

- Key Changes in Rules & Regulations
- Ridership update
- DOT Support and budget expenditures
  - Vehicle and Response time checks
  - Vehicle Retrieval
  - Safety Messaging
  - Program management
  - Maintenance Items
- Company Events & Highlights
- Any changes and plans for Q2

### Next Meeting Dates:

- November 13<sup>th</sup>
- December 11<sup>th</sup>

