
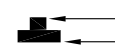





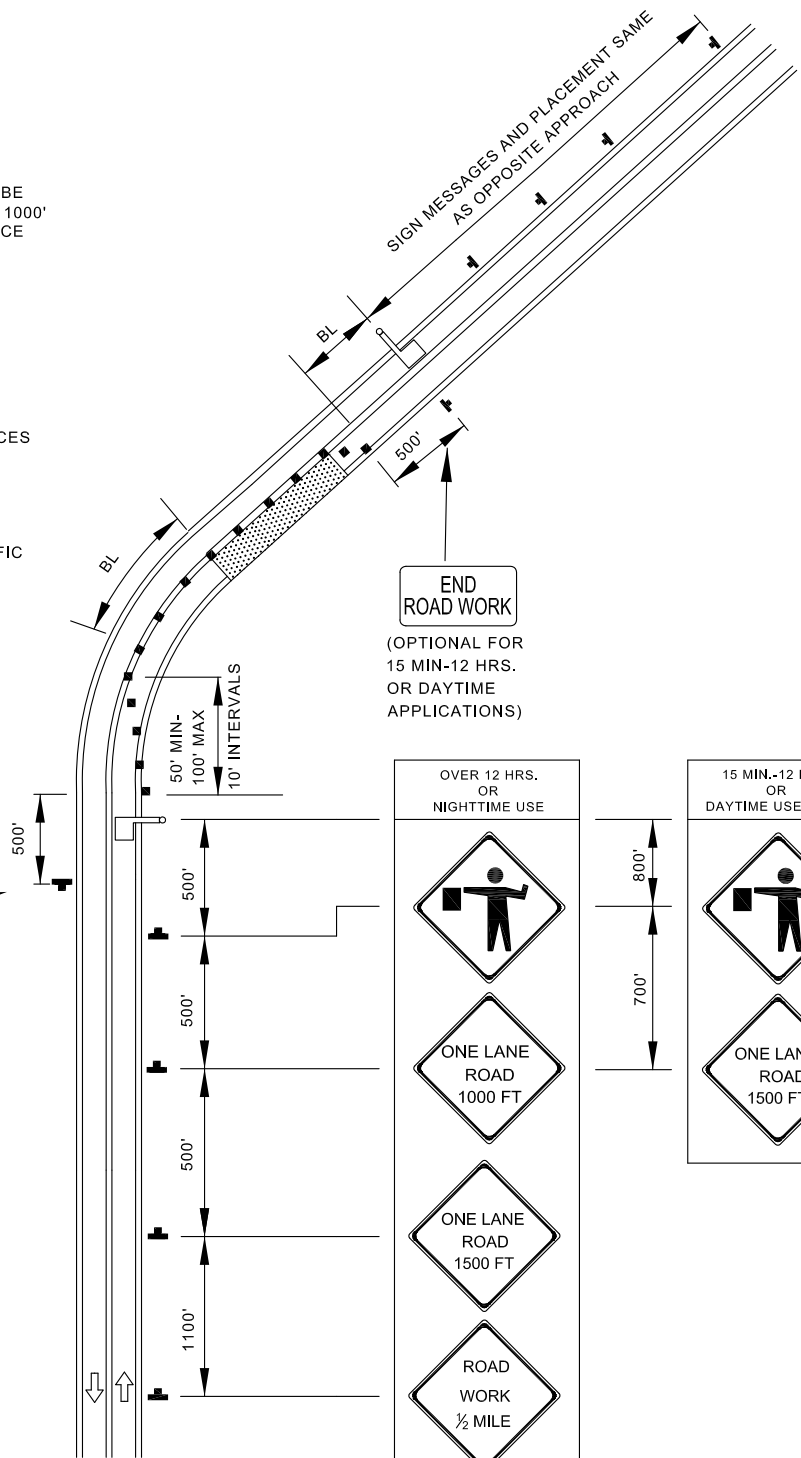
TEMPORARY TRAFFIC CONTROL TYPICAL APPLICATION

NOTE:
 FLAGGER SHALL NEVER BE STATIONED MORE THAN 1000' AWAY FROM THE ADVANCE FLAGGER SIGN.

KEY:

-  CHANNELIZING DEVICES
-  SIGN SUPPORT
FACE OF SIGN
-  DIRECTION OF TRAFFIC
-  WORK SITE
-  FLAGGER

END ROAD WORK
 (OPTIONAL FOR 15 MIN.-12 HRS. OR DAYTIME APPLICATIONS)




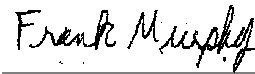
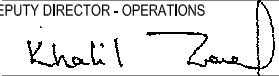
OVER 12 HRS. OR NIGHTTIME USE






15 MIN.-12 HRS. OR DAYTIME USE ONLY




	APPROVED:  DEPUTY DIRECTOR - OPERATIONS	CITY OF BALTIMORE DEPARTMENT OF TRANSPORTATION TRAFFIC DIVISION	ISSUED 8 / 2010	REVISED	REVISED
	APPROVED:  DIRECTOR, DEPARTMENT OF TRANSPORTATION	FLAGGING OPERATION / 2-LANE, 2-WAY EQUAL / LESS THAN 40 MPH	STANDARD NO. BC 104.02-10		
			SHEET 1 OF 1		