






TEMPORARY TRAFFIC CONTROL TYPICAL APPLICATION

NOTES:

SHOULDER CLOSED SIGNS ARE REQUIRED IN PLACE OF SHOULDER WORK SIGNS WHEN THE SHOULDER IS CLOSED BY A PHYSICAL BARRIER.

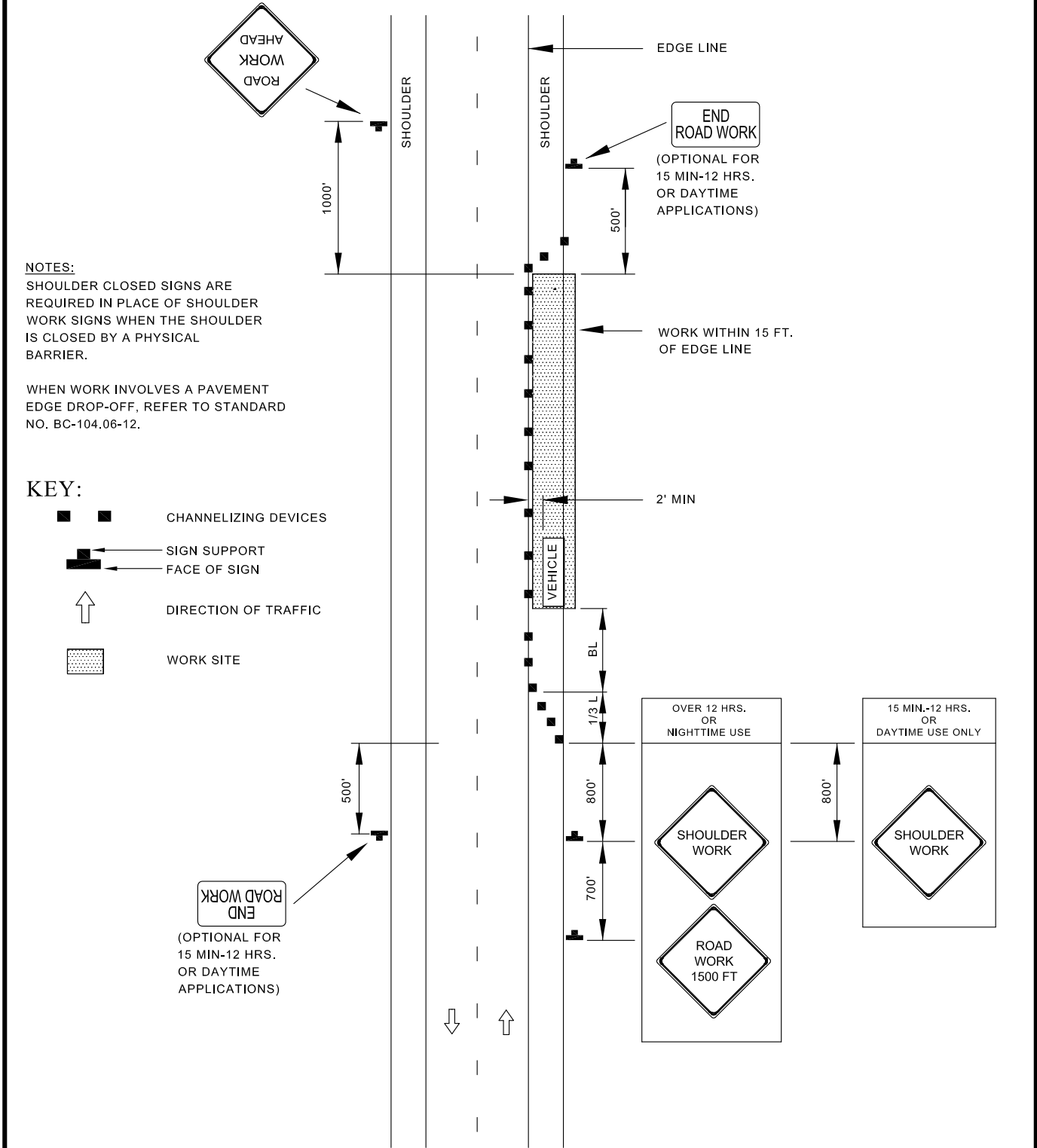
WHEN WORK INVOLVES A PAVEMENT EDGE DROP-OFF, REFER TO STANDARD NO. BC-104.06-12.

KEY:

-  CHANNELIZING DEVICES
-  SIGN SUPPORT
-  FACE OF SIGN
-  DIRECTION OF TRAFFIC
-  WORK SITE

END ROAD WORK

(OPTIONAL FOR 15 MIN-12 HRS. OR DAYTIME APPLICATIONS)



APPROVED: *Frank Murphy*
 DEPUTY DIRECTOR - OPERATIONS
Khalil Zana
 DIRECTOR, DEPARTMENT OF TRANSPORTATION

CITY OF BALTIMORE
 DEPARTMENT OF TRANSPORTATION
 TRAFFIC DIVISION

SHOULDER WORK / 2 LANE, 2 WAY
EQUAL OR LESS THAN 40 MPH

ISSUED	REVISED	REVISED
8 / 2010		
STANDARD NO. BC 104.02-2		
SCALE: NONE	SHEET 1 OF 1	