



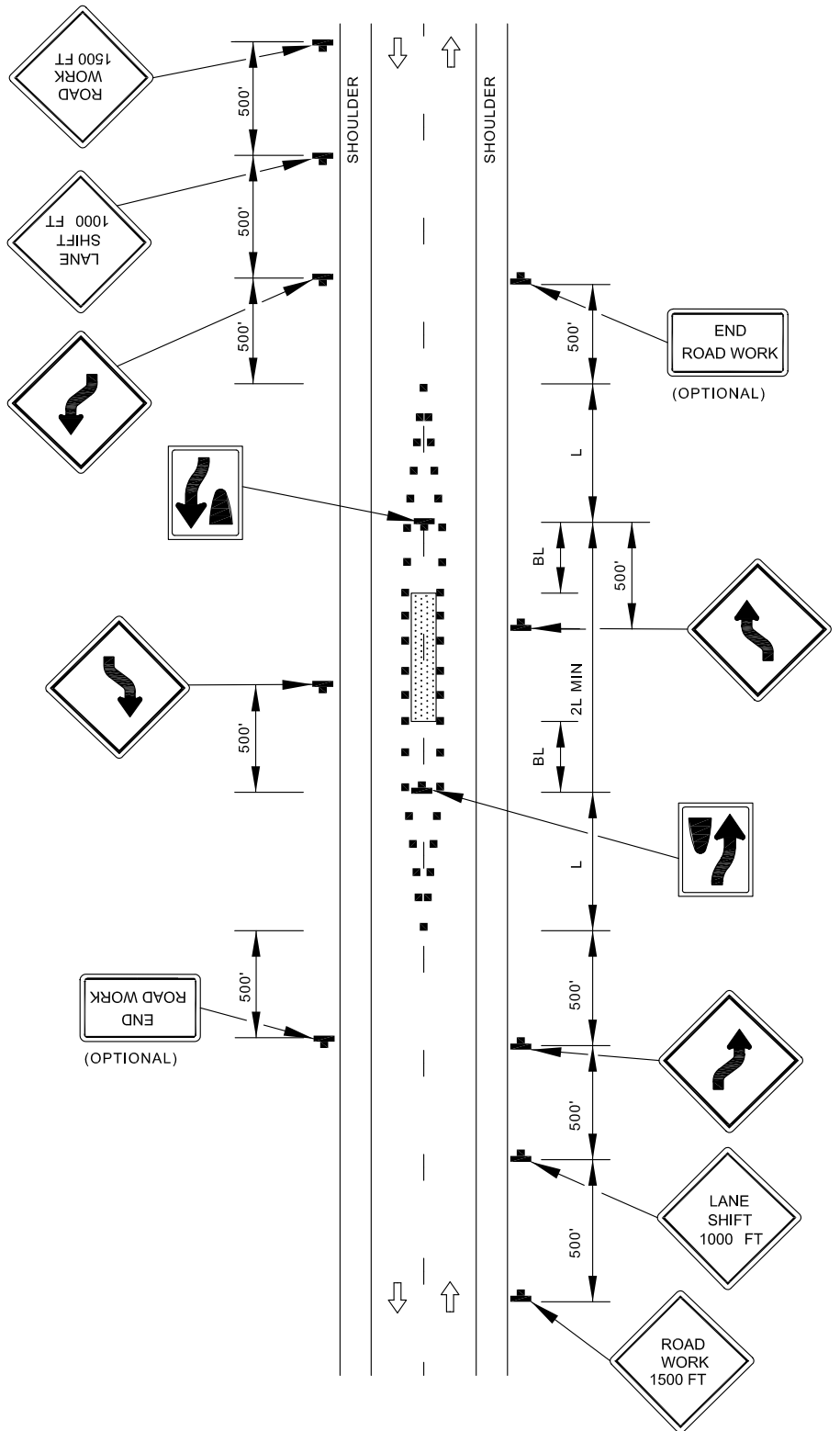


TEMPORARY TRAFFIC CONTROL TYPICAL APPLICATION

NOTE:
THE LANES ON EITHER SIDE OF THE CENTER WORK SPACE SHALL HAVE A MINIMUM WIDTH OF 10 FT AS MEASURED FROM THE NEAR EDGE OF THE CHANNELIZING DEVICES TO THE EDGE OF PAVEMENT OR THE OUTSIDE EDGE OF PAVED SHOULDER.

KEY:

-  CHANNELIZING DEVICES
-  SIGN SUPPORT
FACE OF SIGN
-  DIRECTION OF TRAFFIC
-  WORK SITE



APPROVED:
Frank Murphy
DEPUTY DIRECTOR - OPERATIONS
Khaliil Zane
DIRECTOR, DEPARTMENT OF TRANSPORTATION

CITY OF BALTIMORE
DEPARTMENT OF TRANSPORTATION
TRAFFIC DIVISION

WORK IN CENTER OF LOW-VOLUME ROAD 2 LANE 2-WAY EQUAL / LESS THAN 40 MPH / 15 MIN.- 12 HRS. OR DAYTIME ONLY

ISSUED	REVISED	REVISED	
8 / 2010			
STANDARD NO. BC 104.02-6			
SCALE : NONE		SHEET 1 OF 1	