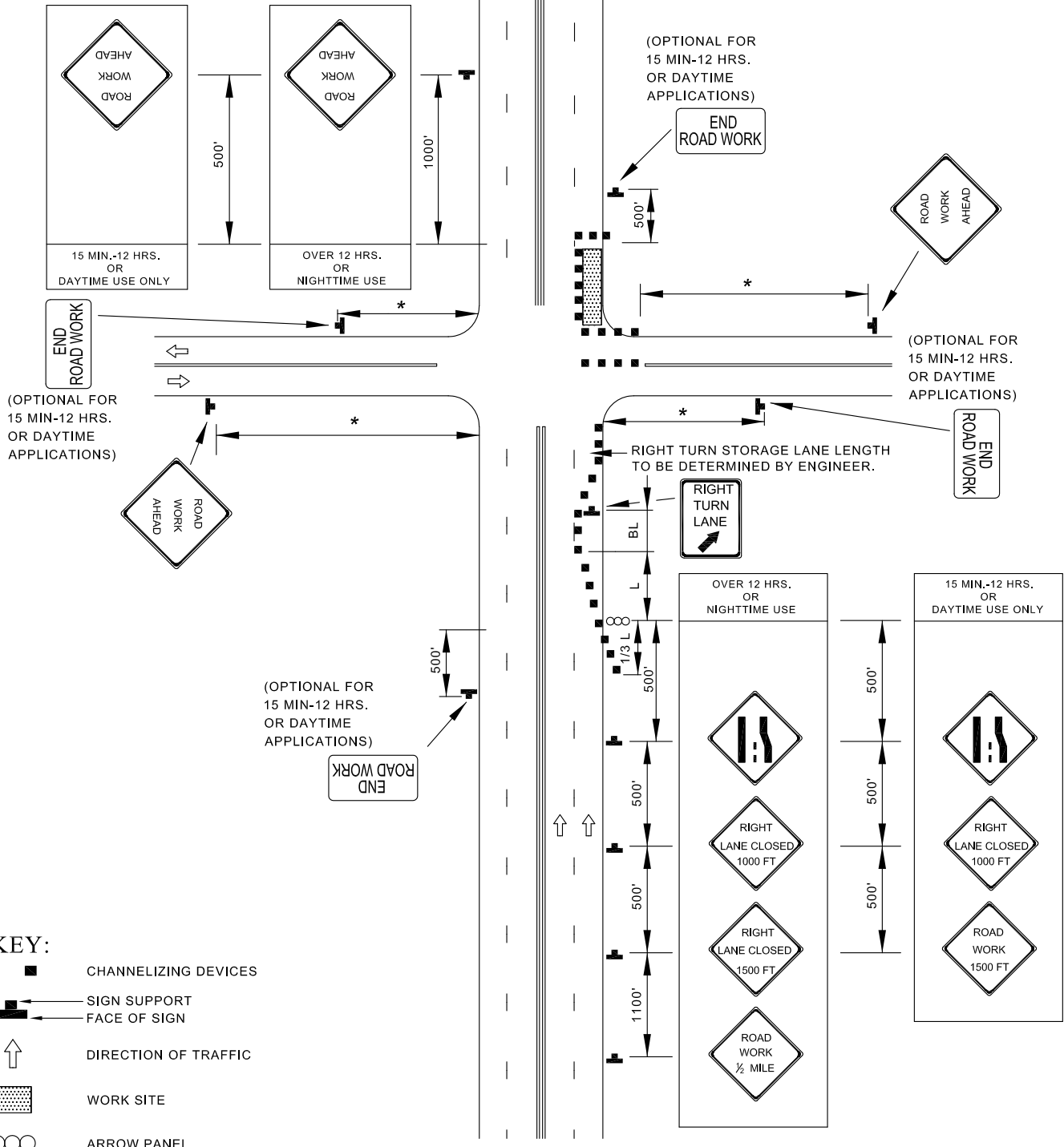


TEMPORARY TRAFFIC CONTROL TYPICAL APPLICATION

NOTES:

THE ARROW PANEL SHALL BE PLACED AS CLOSE TO THE BEGINNING OF THE TAPER AS POSSIBLE WHILE REMAINING WITHIN THE TAPER WHEN CURB EXIST.

* SEE SIGN SPACING CHART BELOW FOR APPROPRIATE DISTANCE.



KEY:

- ■ CHANNELIZING DEVICES
- → SIGN SUPPORT
- FACE OF SIGN
- ↑ DIRECTION OF TRAFFIC
- ▨ WORK SITE
- ARROW PANEL



APPROVED:
Frank Murphy
 DEPUTY DIRECTOR - OPERATIONS
Khalil Zane
 DIRECTOR, DEPARTMENT OF TRANSPORTATION

CITY OF BALTIMORE
DEPARTMENT OF TRANSPORTATION
TRAFFIC DIVISION

INTERSECTION FAR-RIGHT LANE CLOSURE / MULTILANE UNDIVIDED EQUAL / LESS THAN 40 MPH

ISSUED	REVISED	REVISED	
8 / 2010			
STANDARD NO. BC 104.03-12			
SCALE : NONE		SHEET 1 OF 1	