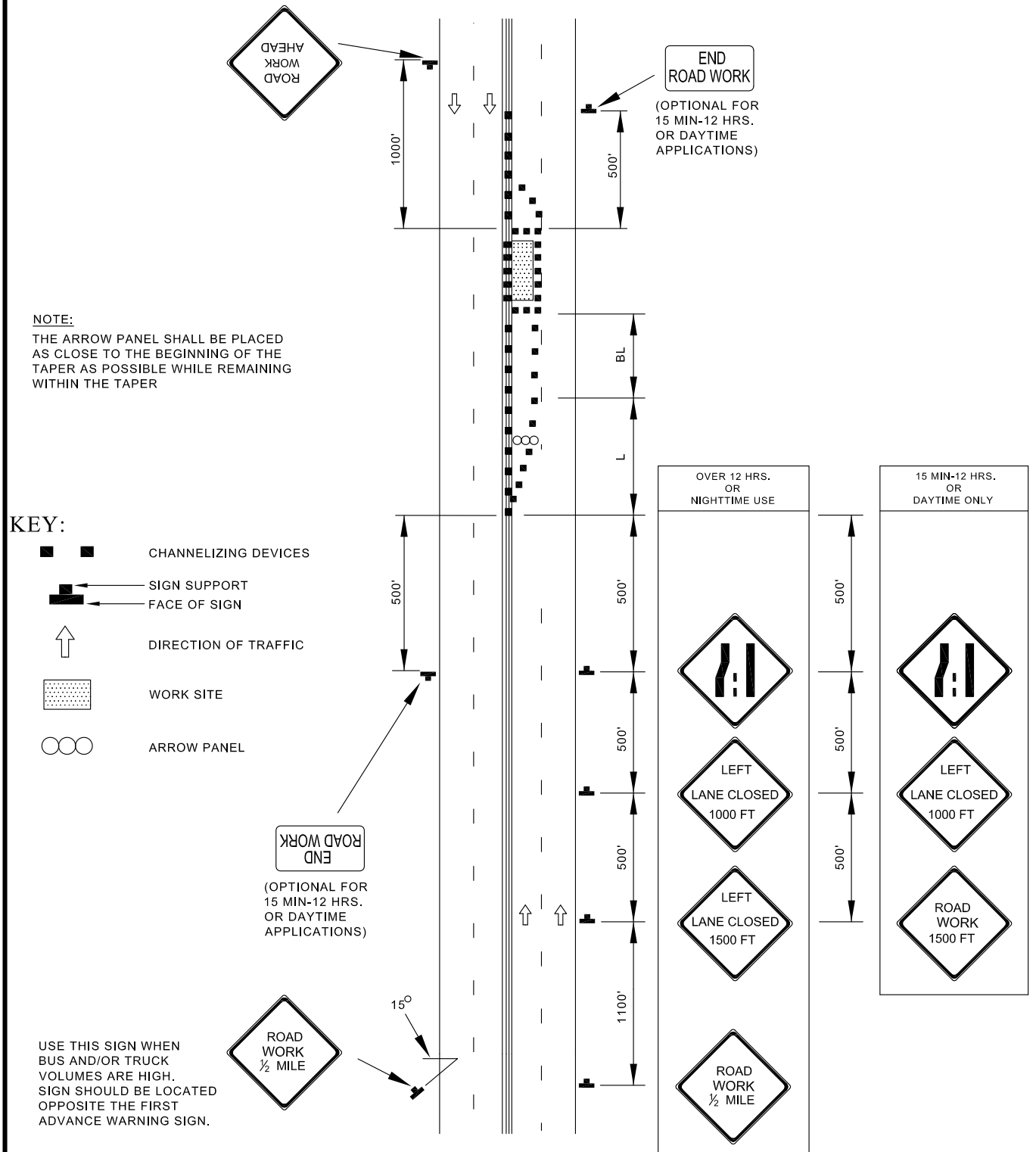

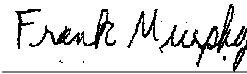
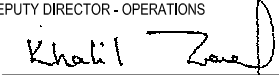


TEMPORARY TRAFFIC CONTROL TYPICAL APPLICATION



USE THIS SIGN WHEN BUS AND/OR TRUCK VOLUMES ARE HIGH. SIGN SHOULD BE LOCATED OPPOSITE THE FIRST ADVANCE WARNING SIGN.

	APPROVED:  DEPUTY DIRECTOR - OPERATIONS	CITY OF BALTIMORE DEPARTMENT OF TRANSPORTATION TRAFFIC DIVISION	ISSUED 8 / 2010	REVISED _____	REVISED _____	
	 DIRECTOR, DEPARTMENT OF TRANSPORTATION	LEFT LANE CLOSURE / MULTILANE UNDIVIDED EQUAL / LESS THAN 40 MPH	STANDARD NO. BC 104.03-4			
			SCALE : NONE	SHEET 1 OF 1		