

TEMPORARY TRAFFIC CONTROL TYPICAL APPLICATION

NOTES:

THIS TYPICAL ALSO APPLIES TO DIVIDED UNCONTROLLED HIGHWAYS.

SYMBOL SIGNS TO REFLECT ACTUAL NUMBER OF THROUGH LANES.









* WHEN LANES WILL NOT BE DIVIDED IN SUBSEQUENT WORK PHASES, USE THE W 1-4(R/L) SIGNS IN LIEU OF SIGNS SHOWN WITH ASTERISK (*).

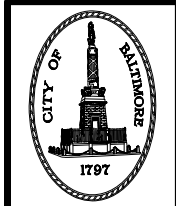
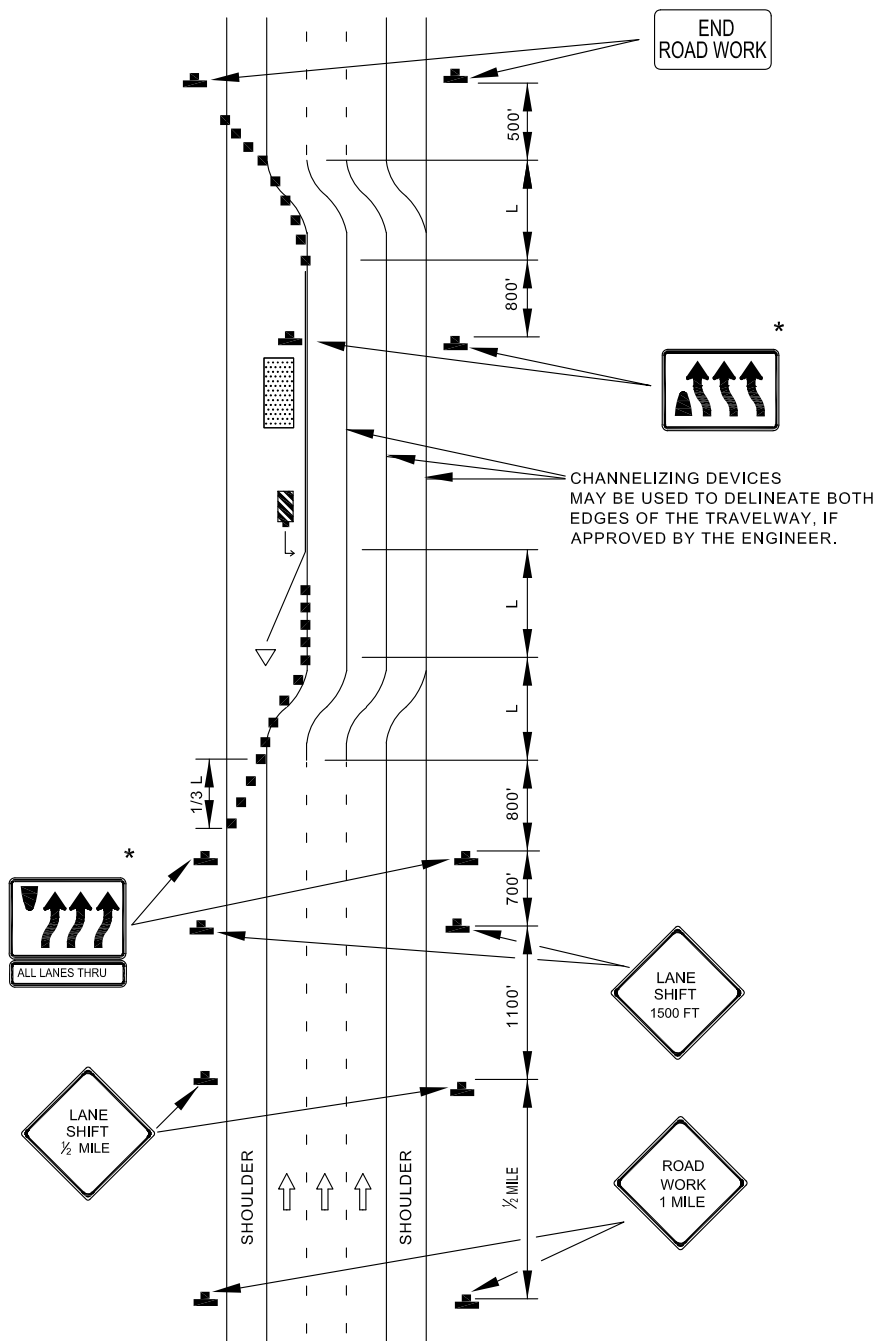
THIS TYPICAL SHALL BE USED FOR ANY LANE SHIFT WHERE PREVAILING SPEEDS CANNOT BE MAINTAINED THROUGH THE SHIFT.

○ FOR LANE SHIFTS WHICH DO NOT SATISFY ABOVE CONDITIONS:

- ▶ DELETE "REVERSE CURVE" WARNING SIGNS, AND
- ▶ REPLACE "LANE SHIFT" SIGNS WITH "ROAD WORK XXX" SIGNS OR OTHER APPROPRIATE SIGNS AS SHOWN IN TEMPORARY TRAFFIC CONTROL TYPICAL APPLICATIONS.

KEY:

-  APPROVED BARRIER
-  CRASH CUSHIONS
-  CHANNELIZING DEVICES
-  SIGN SUPPORT
-  FACE OF SIGN
-  DIRECTION OF TRAFFIC
-  WORK SITE
-  OBJECT MARKER



APPROVED:
Frank Murphy
 DEPUTY DIRECTOR - OPERATIONS
Khalil Zane
 DIRECTOR, DEPARTMENT OF TRANSPORTATION

CITY OF BALTIMORE
DEPARTMENT OF TRANSPORTATION
TRAFFIC DIVISION

LANES SHIFT / EXP-FREWAY /
GREATER THAN 40 MPH / OVER
12 HRS. OR NIGHTTIME USE

ISSUED	REVISED	REVISED	
8 / 2010			
STANDARD NO. BC 104.05-5			
SCALE : NONE		SHEET 1 OF 1	