




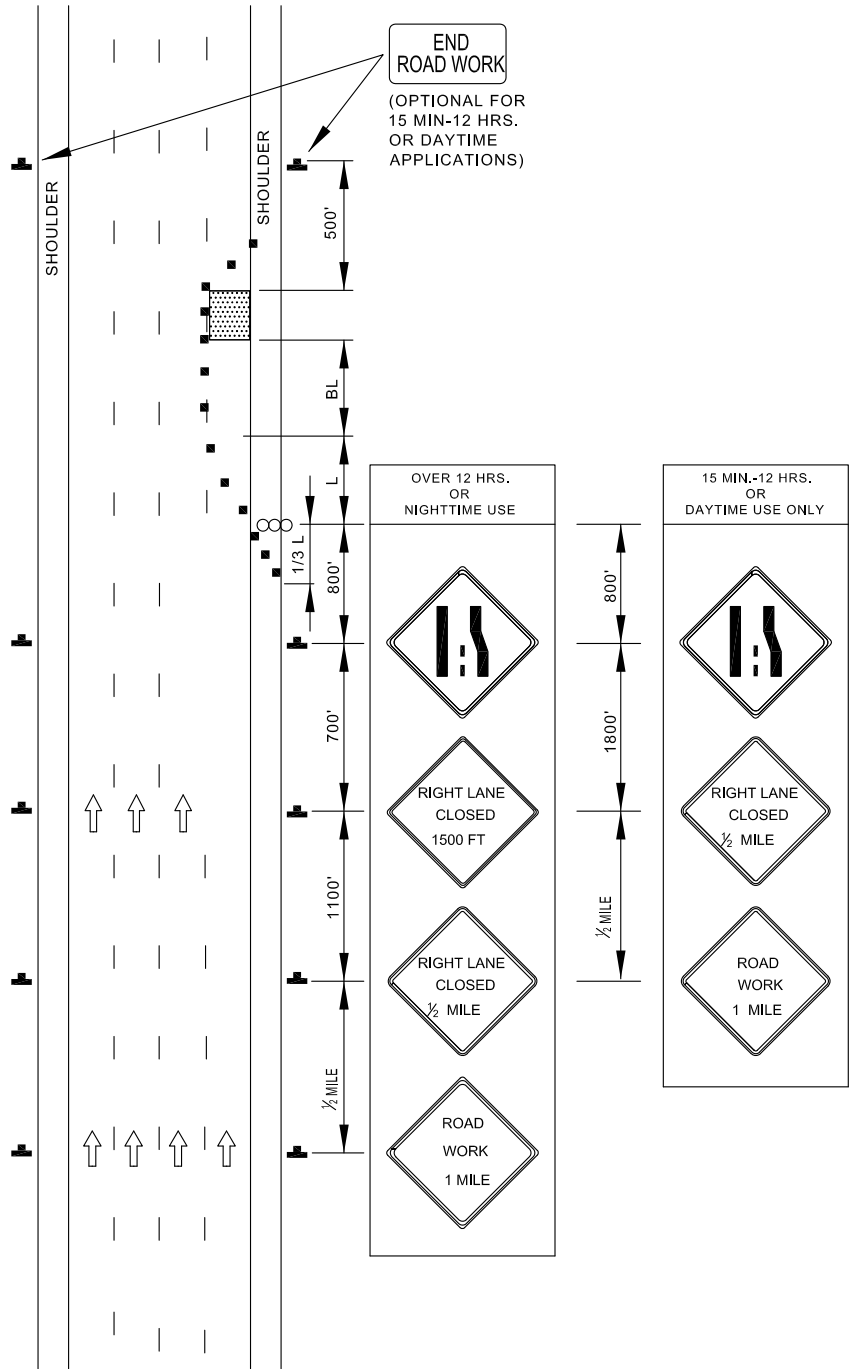

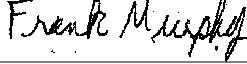



TEMPORARY TRAFFIC CONTROL TYPICAL APPLICATION

KEY:

-  CHANNELIZING DEVICES
-  SIGN SUPPORT
FACE OF SIGN
-  DIRECTION OF TRAFFIC
-  WORK SITE
-  ARROW PANEL



	APPROVED:  DEPUTY DIRECTOR - OPERATIONS	CITY OF BALTIMORE DEPARTMENT OF TRANSPORTATION TRAFFIC DIVISION	ISSUED	REVISED	REVISED
	 DIRECTOR, DEPARTMENT OF TRANSPORTATION	RIGHT LANE CLOSURE / EXP-FREEWAY GREATER THAN 40 MPH	8 / 2010		
			STANDARD NO. BC 104.05-7		
			SCALE : NONE	SHEET 1 OF 1	