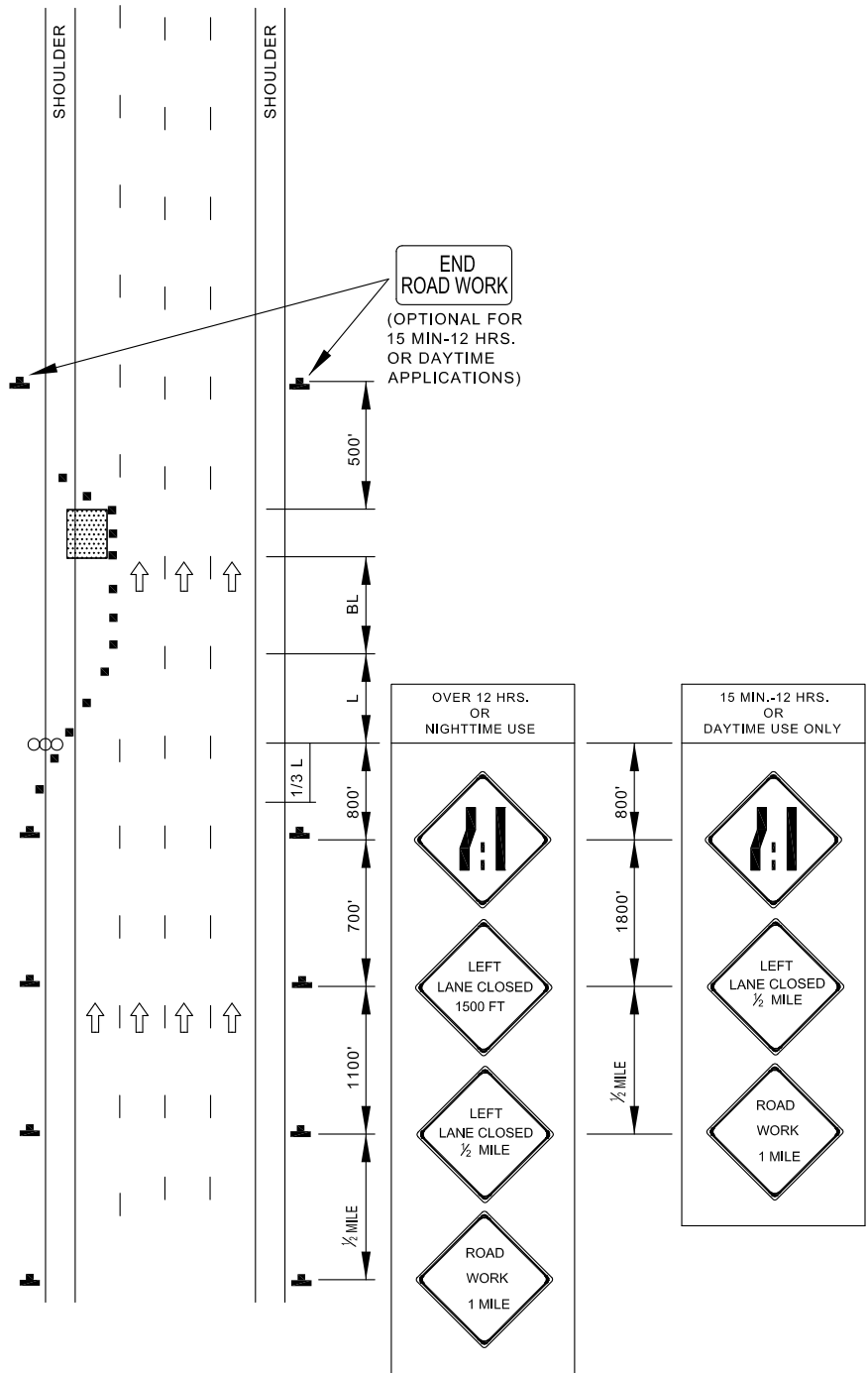


TEMPORARY TRAFFIC CONTROL TYPICAL APPLICATION

KEY:

- ■ CHANNELIZING DEVICES
- SIGN SUPPORT
- ← FACE OF SIGN
- ↑ DIRECTION OF TRAFFIC
- ▨ WORK SITE
- ○ ARROW PANEL



APPROVED:
Frank Murphy
 DEPUTY DIRECTOR - OPERATIONS
Khali Zane
 DIRECTOR, DEPARTMENT OF TRANSPORTATION

CITY OF BALTIMORE
DEPARTMENT OF TRANSPORTATION
TRAFFIC DIVISION

LEFT LANE CLOSURE /
EXP-FREEWAY
GREATER THAN 40 MPH

ISSUED	REVISED	REVISED	
8 / 2010			
STANDARD NO. BC 104.05-8			
SCALE : NONE		SHEET 1 OF 1	