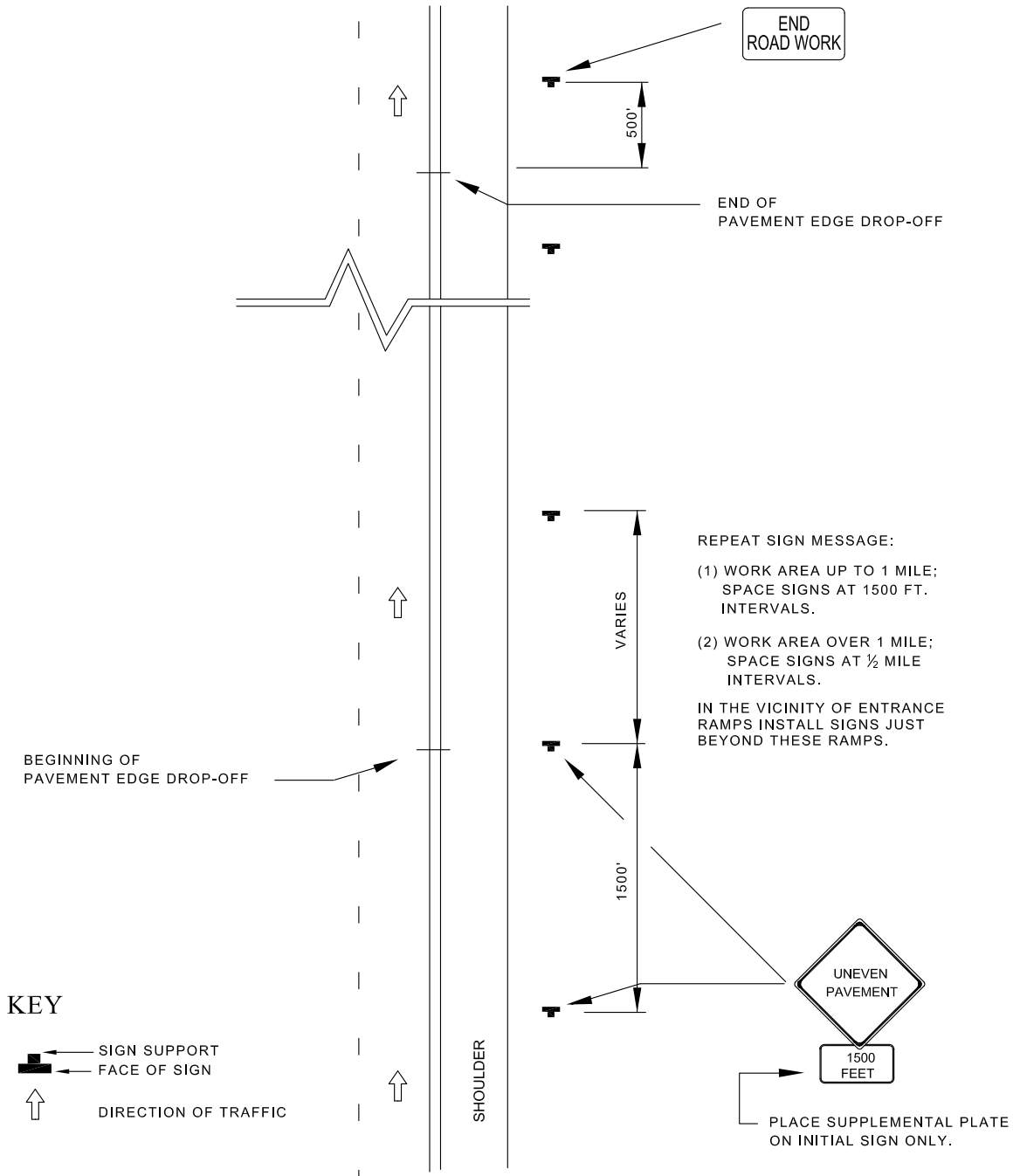


# TEMPORARY TRAFFIC CONTROL TYPICAL APPLICATION



APPROVED:

*Frank Murphy*

DEPUTY DIRECTOR - OPERATIONS

*Khali Zane*

DIRECTOR, DEPARTMENT OF TRANSPORTATION

CITY OF BALTIMORE  
DEPARTMENT OF TRANSPORTATION  
TRAFFIC DIVISION

**PAVEMENT EDGE DROP-OFF 2.5 INCHES OR LESS (BETWEEN TRAFFIC LANES AND SHOULDER)**

ISSUED	REVISED	REVISED
8 / 2010		
STANDARD NO. BC 104.06-12		
SCALE : NONE	SHEET 1 OF 1	