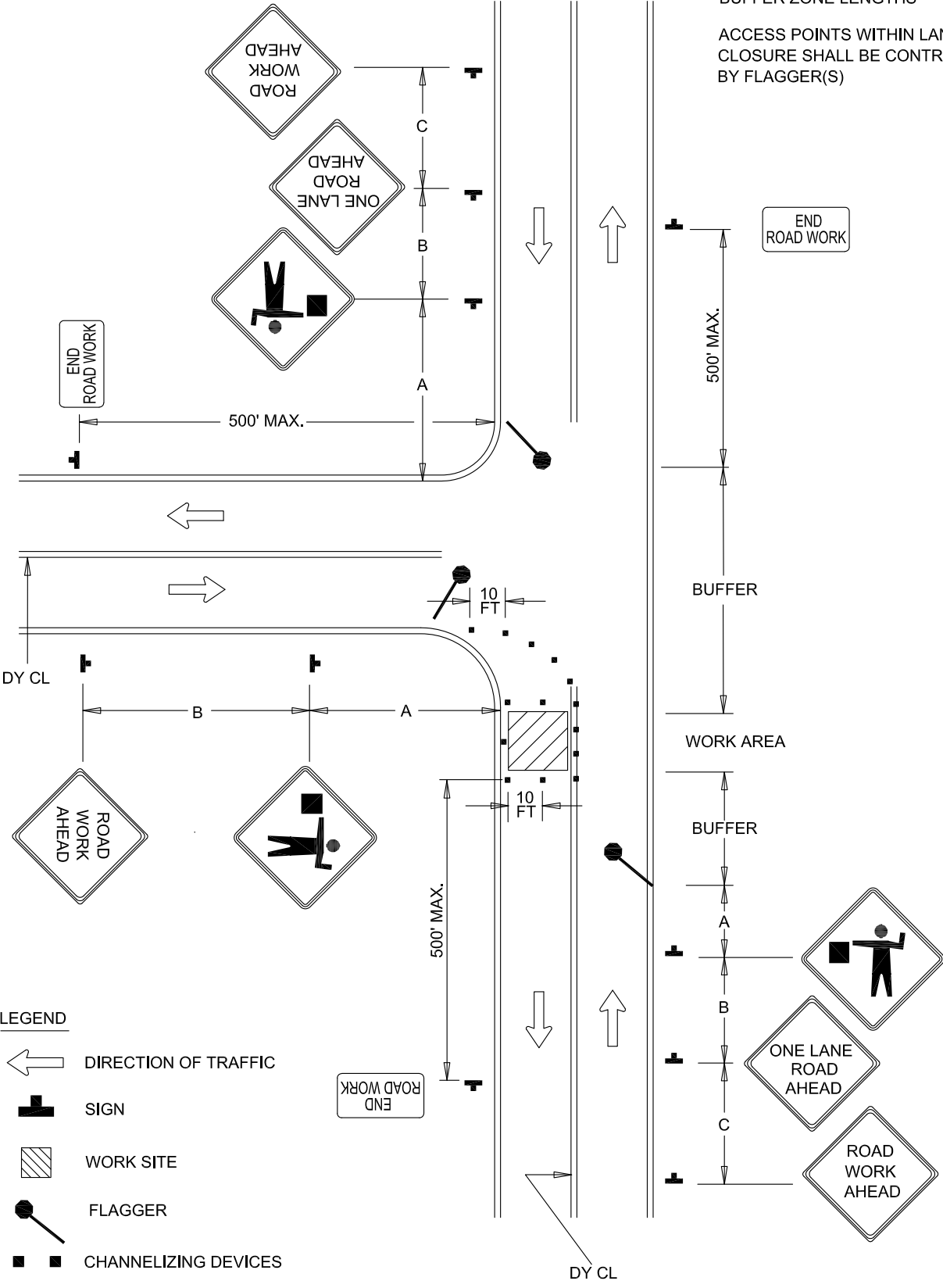


LEGEND

REFER TO BC 104.01-4 FOR SIGN SPACING, TAPER LENGTHS AND BUFFER ZONE LENGTHS

ACCESS POINTS WITHIN LANE CLOSURE SHALL BE CONTROLLED BY FLAGGER(S)



LEGEND

- DIRECTION OF TRAFFIC
- SIGN
- WORK SITE
- FLAGGER
- CHANNELIZING DEVICES



APPROVED:
Frank Murphy
 DEPUTY DIRECTOR - OPERATIONS
Khalil Zane
 DIRECTOR, DEPARTMENT OF TRANSPORTATION

CITY OF BALTIMORE
DEPARTMENT OF TRANSPORTATION
TRAFFIC DIVISION

FLAGGING CONTROL AT
3- LEG INTERSECTION (1)

ISSUED	REVISED	REVISED
8 / 2010		
STANDARD NO. BC 115.01		
SCALE : NONE	SHEET 1 OF 1	