

NOTES

REFER TO BC 104.01-4 FOR SIGN SPACING, TAPER LENGTHS AND BUFFER ZONE LENGTHS

ACCESS POINTS WITHIN LANE CLOSURE SHALL BE CONTROLLED BY FLAGGER(S)



LEGEND

DIRECTION OF TRAFFIC

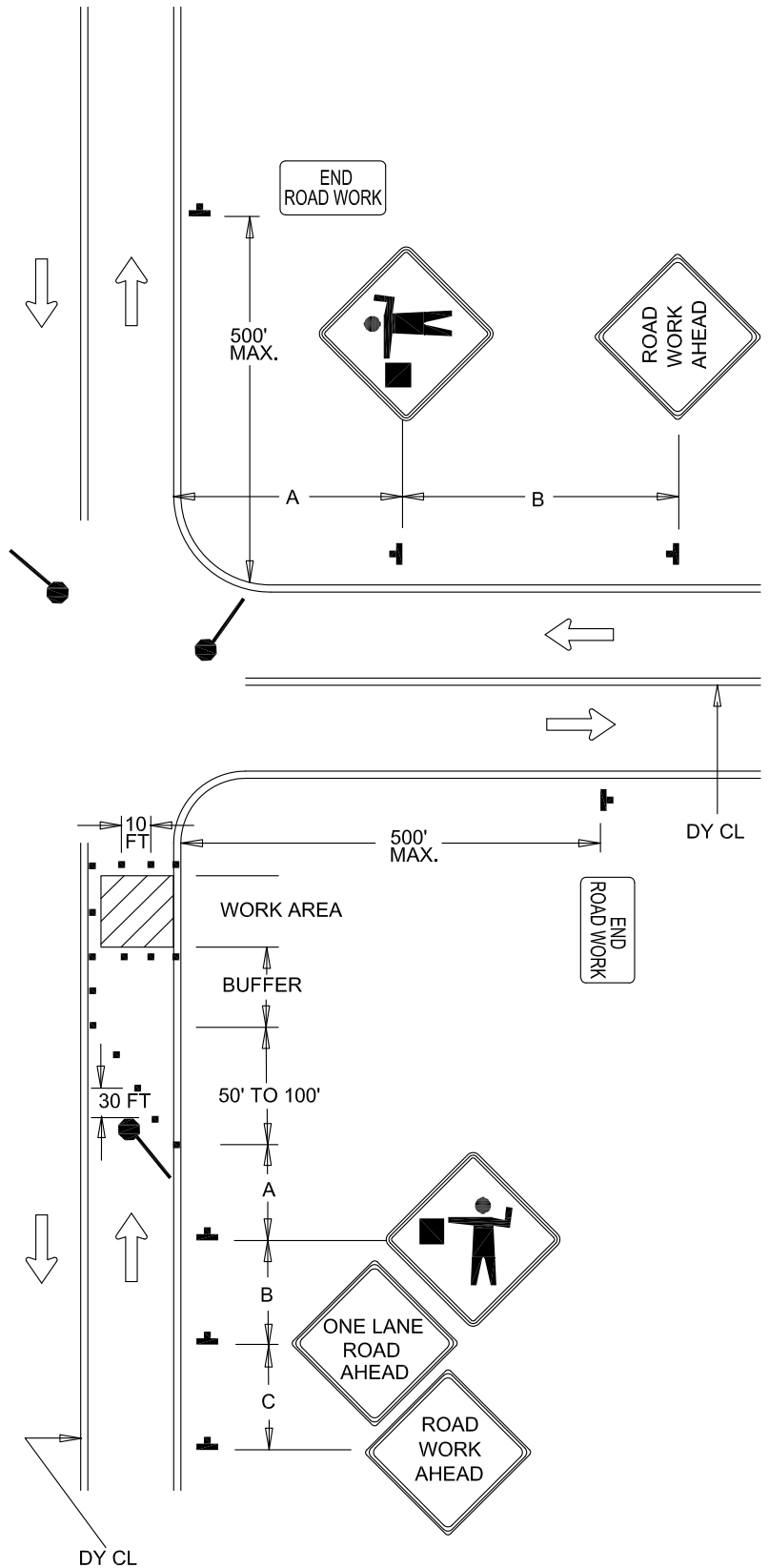
SIGN

WORK SITE

FLAGGER

CHANNELIZING DEVICES

END ROAD WORK



APPROVED:
Frank Murphy
 DEPUTY DIRECTOR - OPERATIONS
Khalil Zane
 DIRECTOR, DEPARTMENT OF TRANSPORTATION

CITY OF BALTIMORE
 DEPARTMENT OF TRANSPORTATION
 TRAFFIC DIVISION

**FLAGGING CONTROL AT
 3 - LEG INTERSECTION (2)**

ISSUED	REVISED	REVISED
8 / 2010		
STANDARD NO. BC 115.02		
SCALE : NONE	SHEET 1 OF 1	