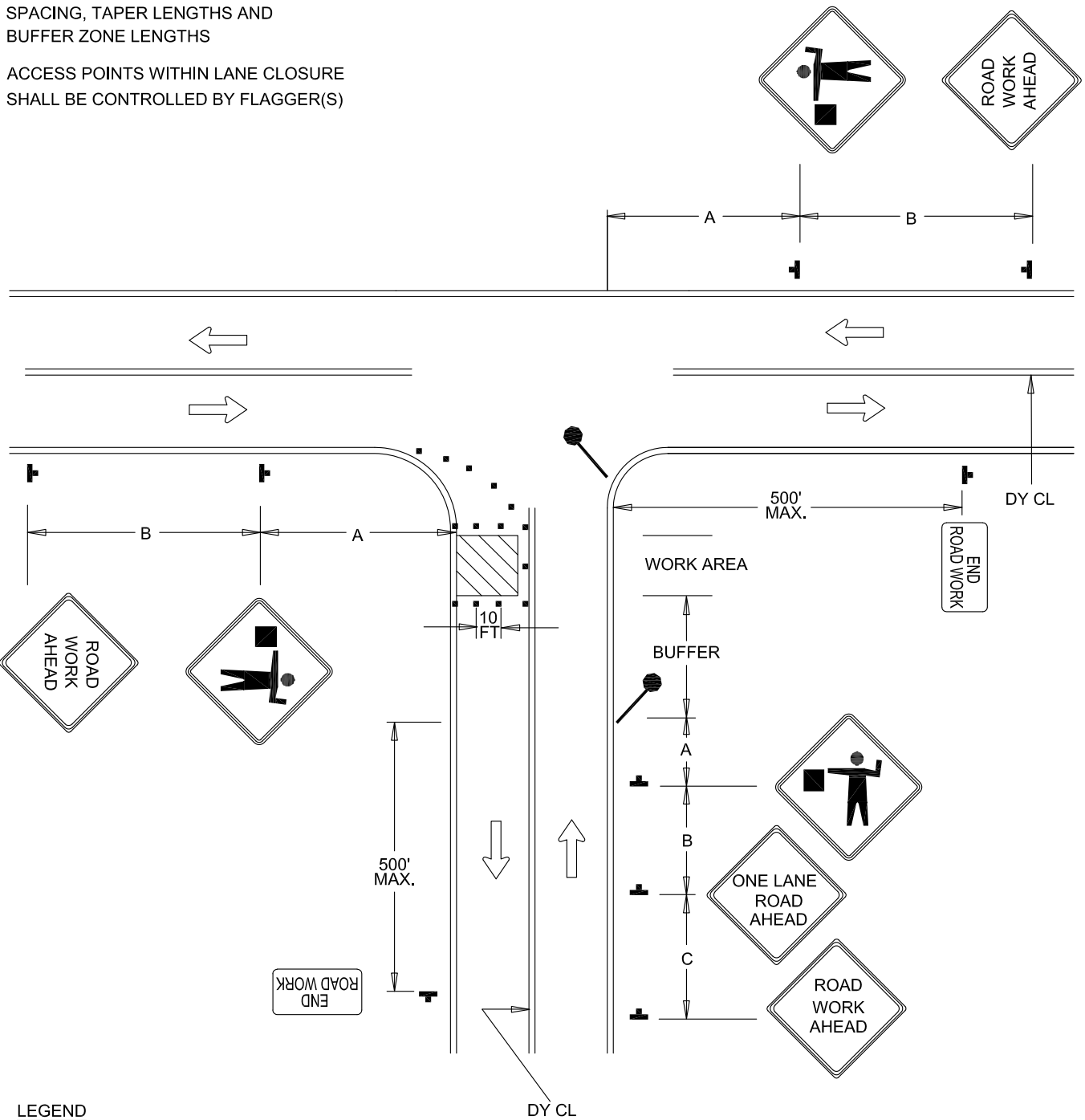


NOTES

REFER TO BC 104.01-4 FOR SIGN
SPACING, TAPER LENGTHS AND
BUFFER ZONE LENGTHS

ACCESS POINTS WITHIN LANE CLOSURE
SHALL BE CONTROLLED BY FLAGGER(S)



LEGEND

DIRECTION OF TRAFFIC

SIGN

WORK SITE

FLAGGER

CHANNELIZING DEVICES



APPROVED:

Frank Murphy

DEPUTY DIRECTOR - OPERATIONS

Khalil Zane

DIRECTOR, DEPARTMENT OF TRANSPORTATION

CITY OF BALTIMORE
DEPARTMENT OF TRANSPORTATION
TRAFFIC DIVISION

**FLAGGING CONTROL AT
3 - LEG INTERSECTION (4)**

ISSUED	REVISED	REVISED
8 / 2010		
STANDARD NO. BC 115.04		
SCALE : NONE	SHEET 1 OF 1	