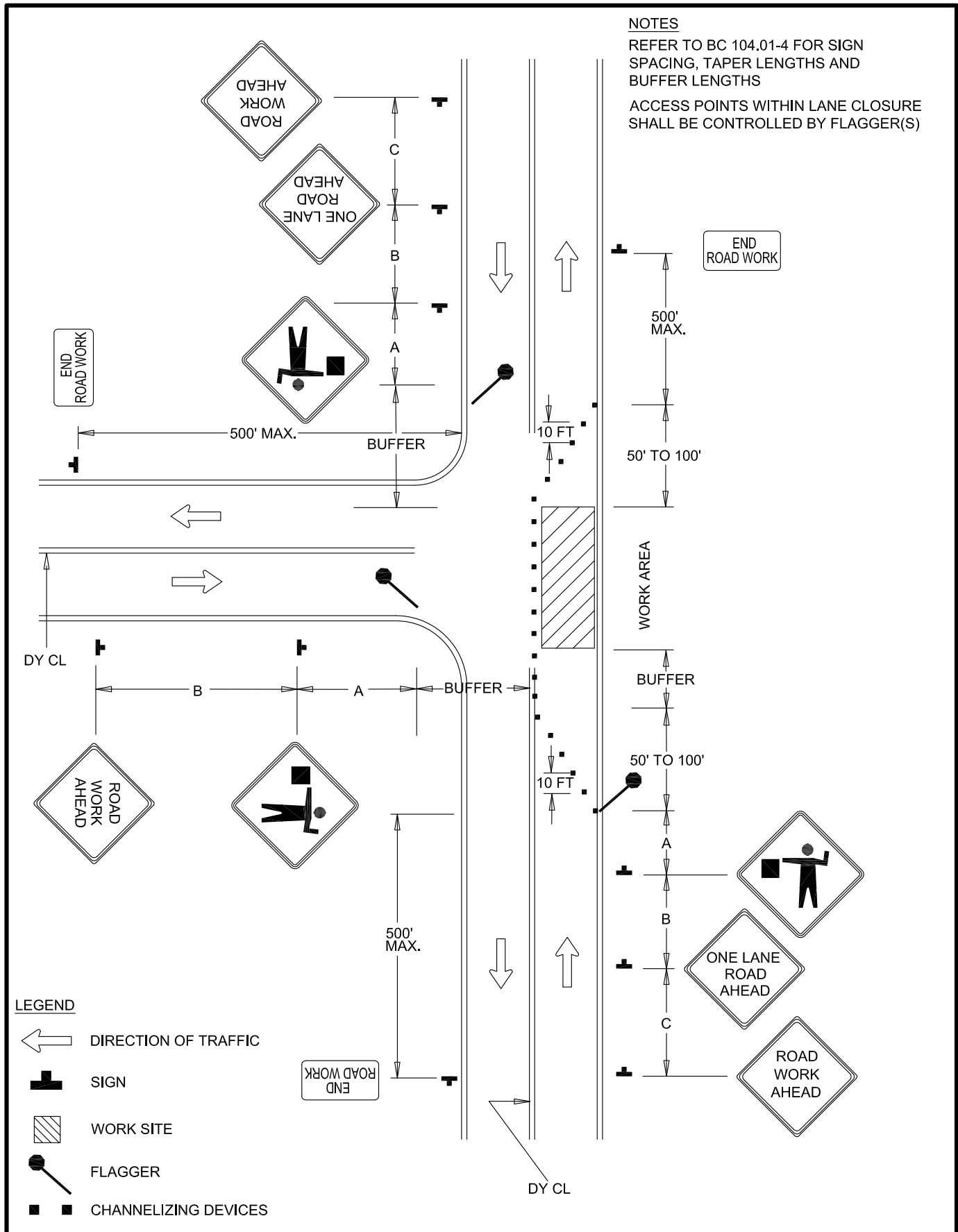


NOTES

REFER TO BC 104.01-4 FOR SIGN SPACING, TAPER LENGTHS AND BUFFER LENGTHS

ACCESS POINTS WITHIN LANE CLOSURE SHALL BE CONTROLLED BY FLAGGER(S)



LEGEND

- DIRECTION OF TRAFFIC
- SIGN
- WORK SITE
- FLAGGER
- CHANNELIZING DEVICES



APPROVED:
Frank Murphy
 DEPUTY DIRECTOR - OPERATIONS
Khali Zane
 DIRECTOR, DEPARTMENT OF TRANSPORTATION

CITY OF BALTIMORE
DEPARTMENT OF TRANSPORTATION
TRAFFIC DIVISION

FLAGGING CONTROL AT
3 - LEG INTERSECTION
FAR - SIDE CLOSURE

| | | |
|---------------------------|--------------|---------|
| ISSUED | REVISED | REVISED |
| 8 / 2010 | | |
| STANDARD NO. BC 115.05 | | |
| SCALE : NONE | SHEET 1 OF 1 | |