

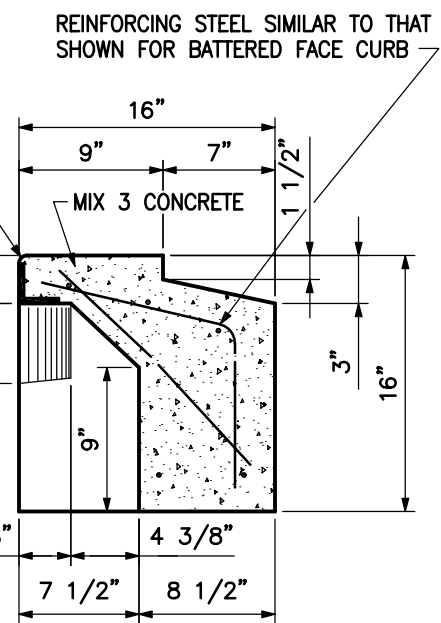
GALVANIZED BENT
L 2 1/2"x2 1/2"x1/2"x5'-5"
LONG

ALL LONGITUDINAL BARS
NO. 4 5'-2" LONG (5 REQ'D.)

MIX 3 CONCRETE

NO. 4 BARS 24" CC
3 REQ'D. (BEGIN 9" FROM
ANGLE END) FASTEN TO
ANGLE WITH 1/4" FILLET
WELD ALL AROUND BEFORE
GALVANIZING.

NO. 4 BARS 12" CC
6 REQ'D.



REINFORCING STEEL SIMILAR TO THAT
SHOWN FOR BATTERED FACE CURB



APPROVED:

[Signature]
HEAD, BUREAU OF WATER AND WASTEWATER

[Signature]
DIRECTOR, DEPARTMENT OF PUBLIC WORKS

CITY OF BALTIMORE
DEPARTMENT OF PUBLIC WORKS
BUREAU OF WATER AND WASTEWATER

PRECAST SPECIAL CURB
FOR UNDEPRESSED 'E'
COMBINATION INLET

ISSUED	REVISED	REVISED
3 / 2008		
STANDARD NO. BC 376.22		
SCALE: NONE		SHEET 1 OF 2