

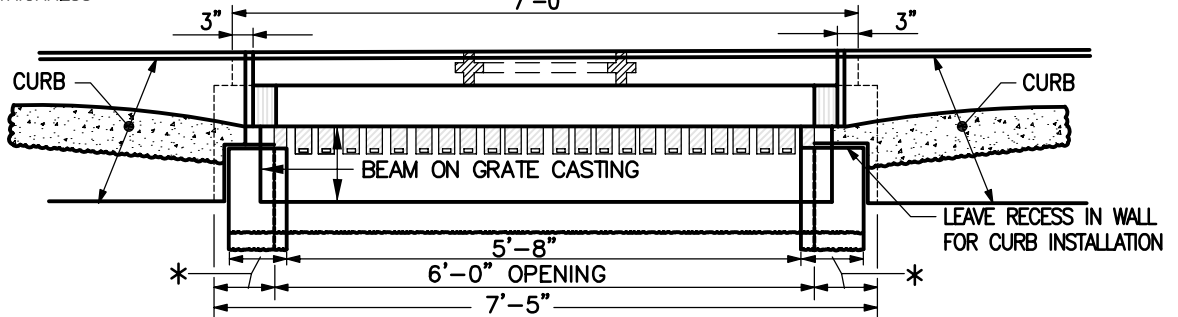
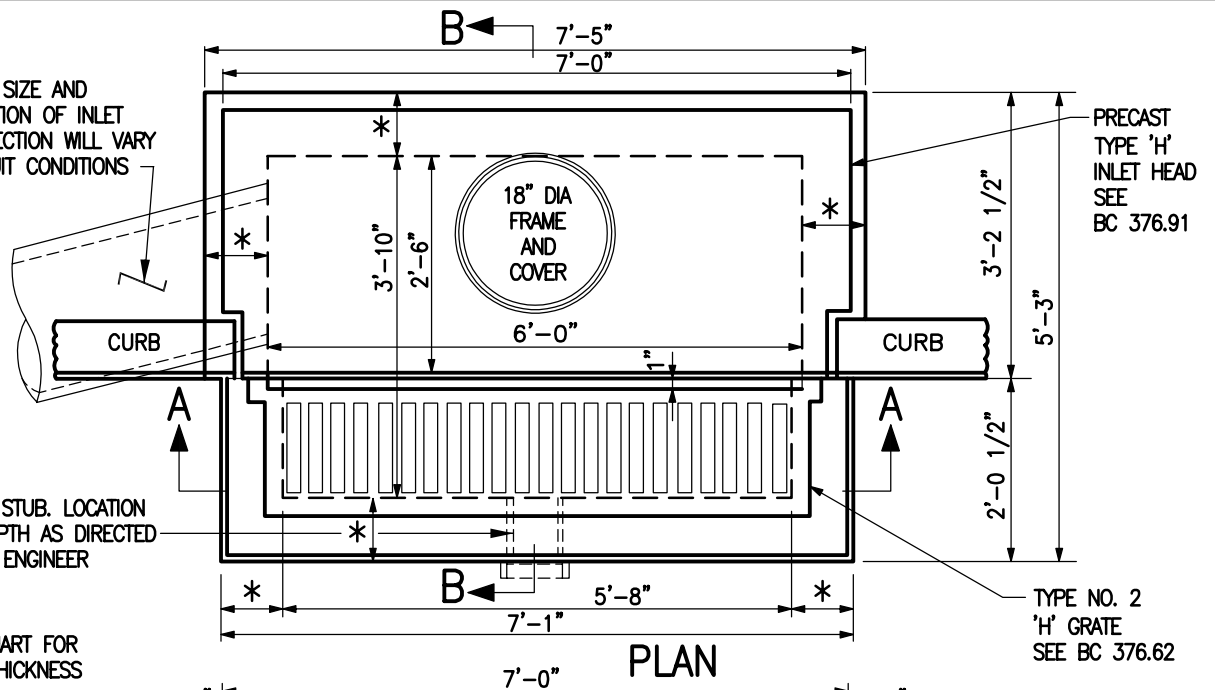
TYPE, SIZE AND DIRECTION OF INLET CONNECTION WILL VARY TO SUIT CONDITIONS

PRECAST TYPE 'H' INLET HEAD SEE BC 376.91

6" V.P. STUB. LOCATION AND DEPTH AS DIRECTED BY THE ENGINEER

* SEE CHART FOR WALL THICKNESS

TYPE NO. 2 'H' GRATE SEE BC 376.62

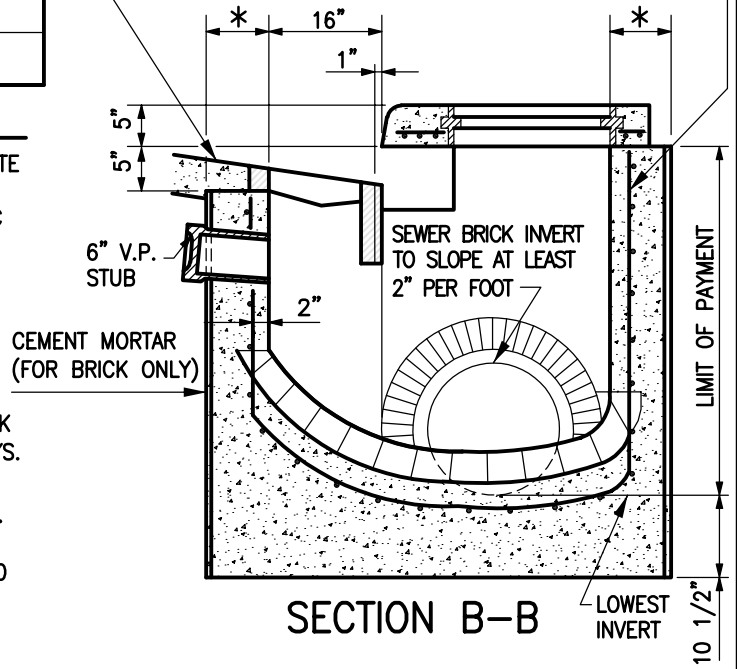


	PRECAST	CAST-IN-PLACE/BRICK
WALL THICKNESS	6" MIN	8 1/2"
REINF	2 LAYERS- 4x4 W4.0 x W4.0- WWF	NO. 4 BARS @ 6" CC EW 2" COVER
CONCRETE	MIX 6	MIX 3
ALLOWABLE DEPTH	DPW APPROVAL REQUIRED OVER 15'	

SECTION A-A

NO. 4 BARS @ 6" CC BOTH WAYS (CONC INLET WALLS ONLY)

SLOPE TOP - CONFORM TO CROWN STREET



NOTES:

1. INLET MAY BE CONSTRUCTED OF BRICK OR MIX 3 CONCRETE WITH NO. 4 DEFORMED BARS @ 6" CC BOTH WAYS. 2" CLEAR FROM FACE OF INSIDE WALL. SEE LATEST DPW SPEC FOR INLETS.
2. TOP 4" OF CONCRETE WALLS MAY BE BRICK MASONRY TO BRING GRATE TO REQUIRED GRADE.
3. PLACE 1/4" EXPANSION MATERIAL BETWEEN FRAME AND ABUTTING RIGID PAVEMENT; AND BETWEEN ENDS OF INLET CURB AND NORMAL CURB.
4. IF 6" MIX 1 CONCRETE IS USED AS FOUNDATION FOR BRICK INLET, PLACE NO. 4 DEFORMED BARS @ 12" CC BOTH WAYS. 2" CLEAR FROM TOP.
5. COST OF FURNISHING AND PLACING 6" V.P. STUB WITH V.P. STOPPER TO BE INCLUDED IN THE PRICE BID PER INLET.
6. DEPTH OF INLET CONNECTION IN STREETS AT CURB LINE TO BE 52" FROM INVERT TO ESTABLISHED CURB GRADE. NO DEVIATION FROM THIS DEPTH WILL BE CONSIDERED FOR PAYMENT UNLESS DIRECTED BY THE ENGINEER IN WRITING.



APPROVED: *[Signature]*
 HEAD, BUREAU OF WATER AND WASTEWATER
[Signature]
 DIRECTOR, DEPARTMENT OF PUBLIC WORKS

CITY OF BALTIMORE
 DEPARTMENT OF PUBLIC WORKS
 BUREAU OF WATER AND WASTEWATER

ISSUED	REVISED	REVISED
3 / 2008		

TYPE 'H' COMBINATION INLET

STANDARD NO. BC 376.64

SCALE: NONE SHEET 1 OF 1