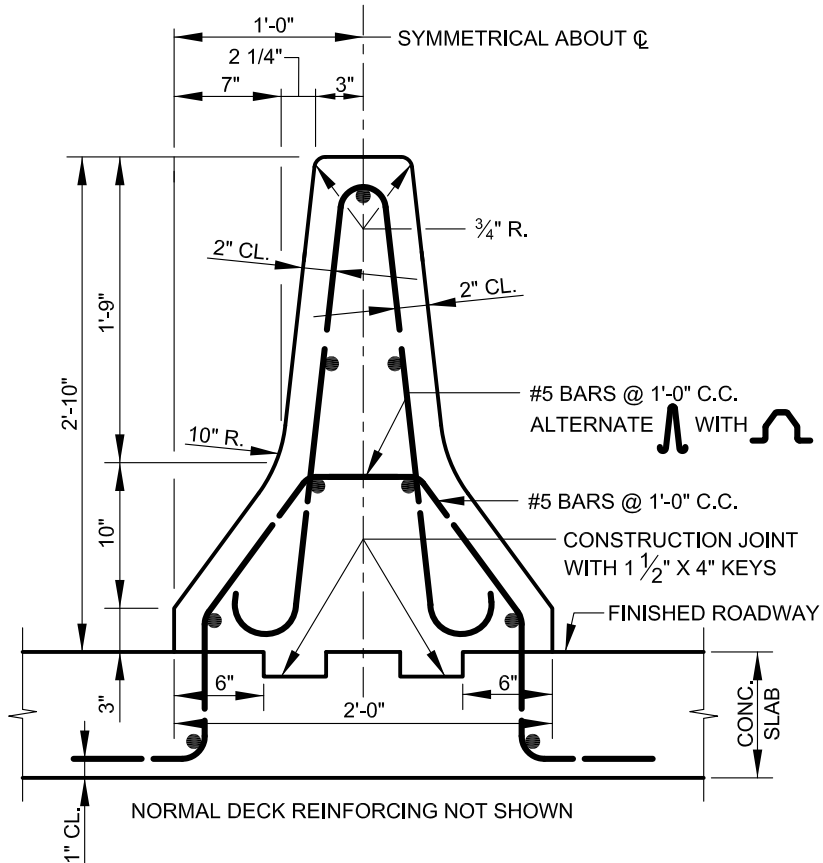


NOTE:
ALL LONGITUDINAL BARS ARE #5
SPACED AS SHOWN



TYPICAL CROSS SECTION

GENERAL NOTES:

- PLACE CONTRACTION JOINTS 30'-0" MAX.
- JOINTS SHALL BE FORMED BY POURING ALTERNATE SECTIONS.
- THE POURS OF ADJACENT SECTIONS SHALL HAVE A TWO (2) DAY DELAY BETWEEN POURS.
- A PARAFFIN COATING SHALL BE APPLIED AT EVERY JOINT.
- NO REINFORCING STEEL SHALL PASS THROUGH JOINT.



APPROVED:
Primal Devita
DIVISION CHIEF, TRANSPORTATION ENGINEERING
AND CONSTRUCTION
Khalil Zare
DIRECTOR, DEPARTMENT OF TRANSPORTATION

CITY OF BALTIMORE
DEPARTMENT OF TRANSPORTATION
TRANSPORTATION ENGINEERING AND
CONSTRUCTION

BRIDGE MEDIAN BARRIER

ISSUED	REVISED	REVISED
8 / 2010		
STANDARD NO. BC 424.92		
SCALE : NONE	SHEET 1 OF 1	