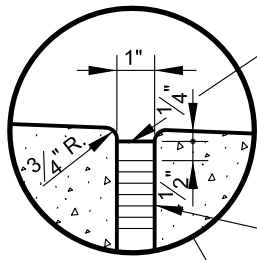


1/2" DEEP HOT Poured RUBBER JOINT SEALER, 1/4" BELOW ROADWAY SURFACE OVER PREFORMED EXPANSION MATERIAL WITH POLYETHELENE TAPE BOND BREAKER BETWEEN PREFORMED EXPANSION MATERIAL AND JOINT SEALER



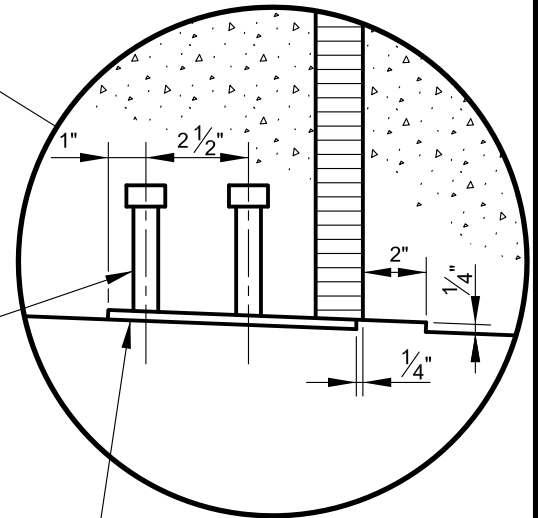
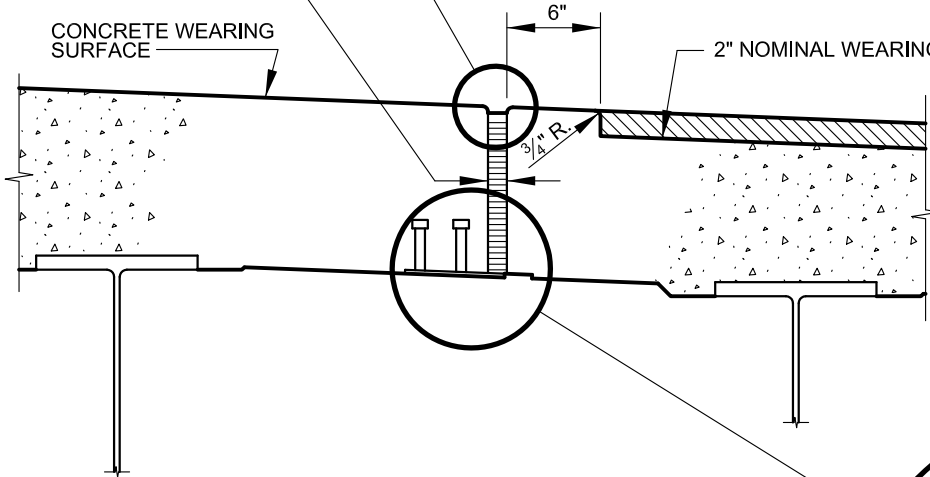
1" PREFORMED EXPANSION MATERIAL

1" PREFORMED EXPANSION MATERIAL

CONCRETE WEARING SURFACE

6"

2" NOMINAL WEARING SURFACE



STUDS - 4" LONG, 1/2" DIA.
@ 1'-6" C/C EACH ROW
(STAGGERED)

1/4" X 6" CONTINUOUS STEEL PLATE - GALVANIZED AFTER STUDS ARE IN PLACE

THIS JOINT ONLY FOR BRIDGES WITH WIDTHS OUT TO OUT, OF SUPERSTRUCTURE GREATER THAN 75'



APPROVED:

Primal Devita
DIVISION CHIEF, TRANSPORTATION ENGINEERING
AND CONSTRUCTION
Khalil Zare
DIRECTOR, DEPARTMENT OF TRANSPORTATION

CITY OF BALTIMORE
DEPARTMENT OF TRANSPORTATION
TRANSPORTATION ENGINEERING AND
CONSTRUCTION

LONGITUDINAL JOINT
IN BRIDGE DECK

ISSUED	REVISED	REVISED
8 / 2010		
STANDARD NO. BC 431.01		
SCALE : NONE	SHEET 1 OF 1	