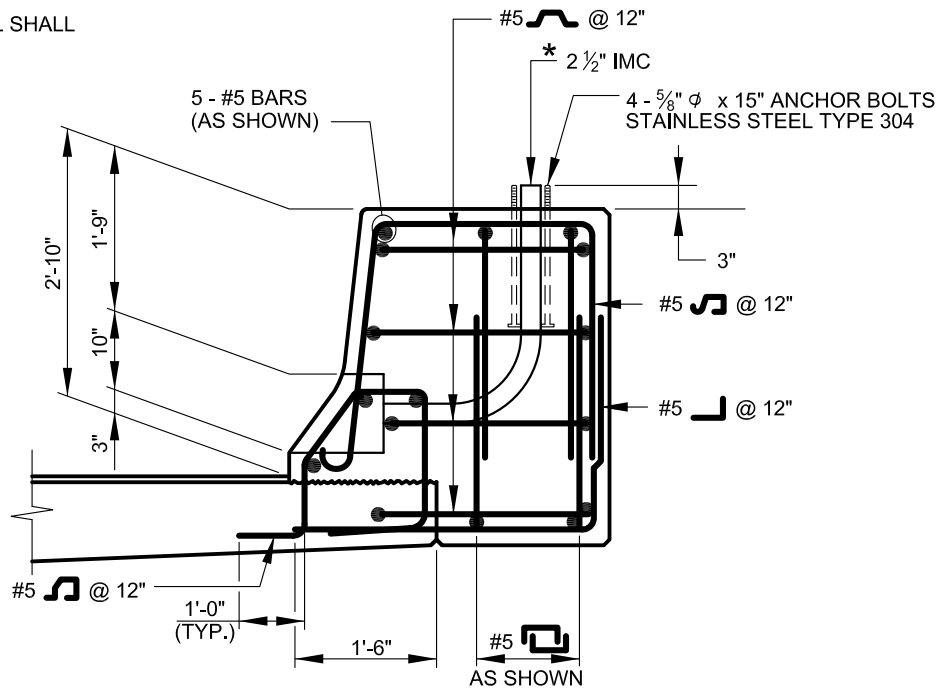


PLAN

NOTE:

- 1. ALL REINFORCING STEEL SHALL BE EPOXY COATED.



NOTE:

- * TWO IMC'S ARE PREFERABLE FOR A CONTROLLER CABINET PULL BOX, ONE FOR LIGHTING AND ONE FOR POWER.

SECTION A-A



APPROVED:
Primal Devita
 DIVISION CHIEF, TRANSPORTATION ENGINEERING AND CONSTRUCTION
Khalil Zare
 DIRECTOR, DEPARTMENT OF TRANSPORTATION

CITY OF BALTIMORE
 DEPARTMENT OF TRANSPORTATION
 TRANSPORTATION ENGINEERING AND CONSTRUCTION

CONTROLLER CABINET SUPPORT

ISSUED	REVISED	REVISED
8 / 2010		
STANDARD NO. BC 440.04		
SCALE: NONE	SHEET 1 OF 1	