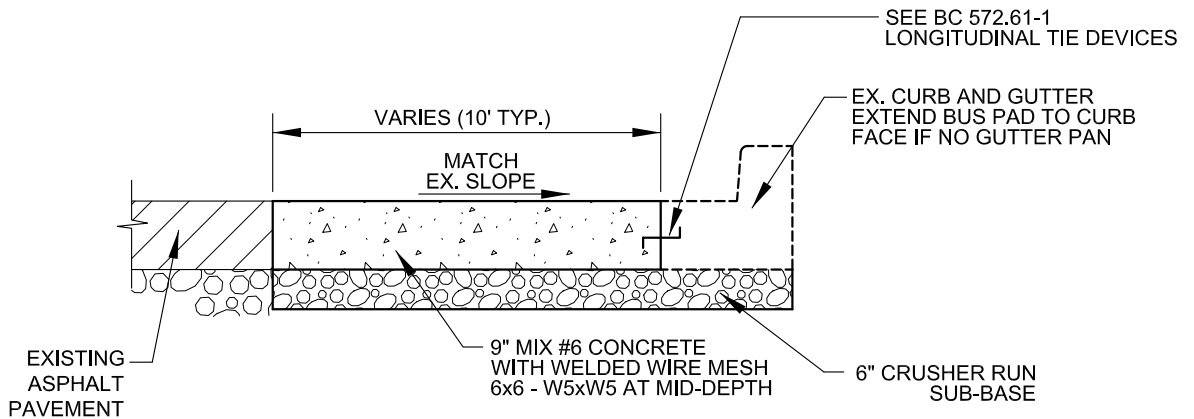
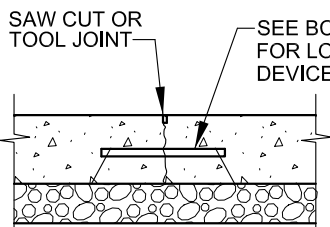


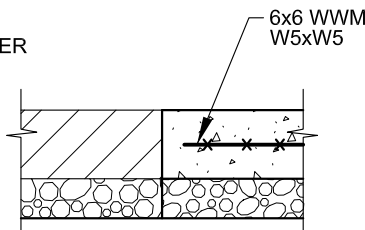
PLAN
FULL DEPTH SAW CUT THE PERIMETER



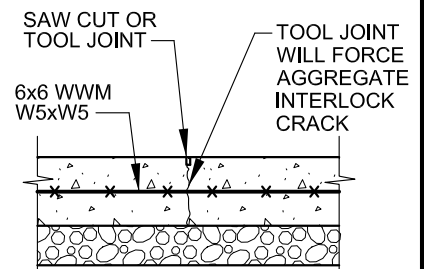
SECTION A-A



SECTION B-B
DOWELED CONTRACTION JOINT



SECTION C-C



SECTION D-D
DUMMY CONTRACTION JOINT

DETAIL FOR BUS PADS ADJACENT TO FLEXIBLE PAVEMENT



APPROVED:
Primal Devita
DIVISION CHIEF, TRANSPORTATION ENGINEERING
AND CONSTRUCTION
Khalil Zare
DIRECTOR, DEPARTMENT OF TRANSPORTATION

CITY OF BALTIMORE
DEPARTMENT OF TRANSPORTATION
TRANSPORTATION ENGINEERING AND
CONSTRUCTION

BUS STOPPING PAD

ISSUED	REVISED	REVISED
8 / 2010		
STANDARD NO. BC 500.13-1		
SCALE: NONE	SHEET 1 OF 2	