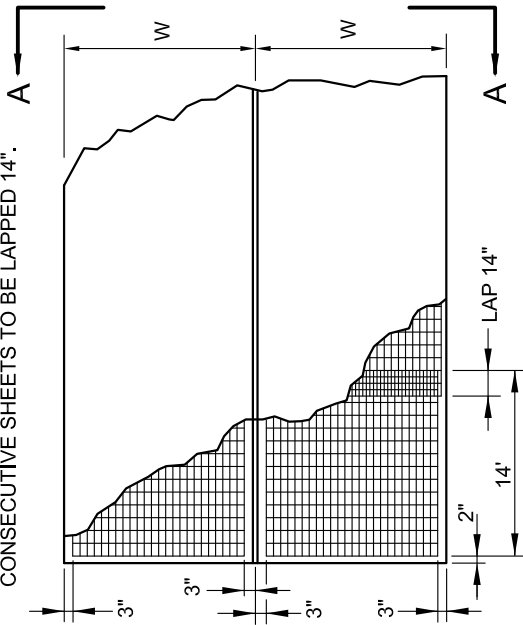


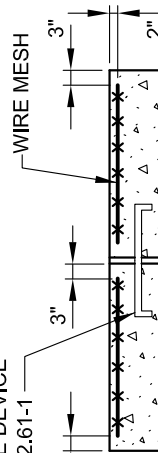
NOTE: HINGED MATS MAY BE USED AT CONTRACTOR'S OPTION.

WELDED WIRE MESH NO. 2 GA. BOTH WAYS
TRANS. 6"x12" MESH SHEET 14'-0" LONG.
CONSECUTIVE SHEETS TO BE LAPPED 14".



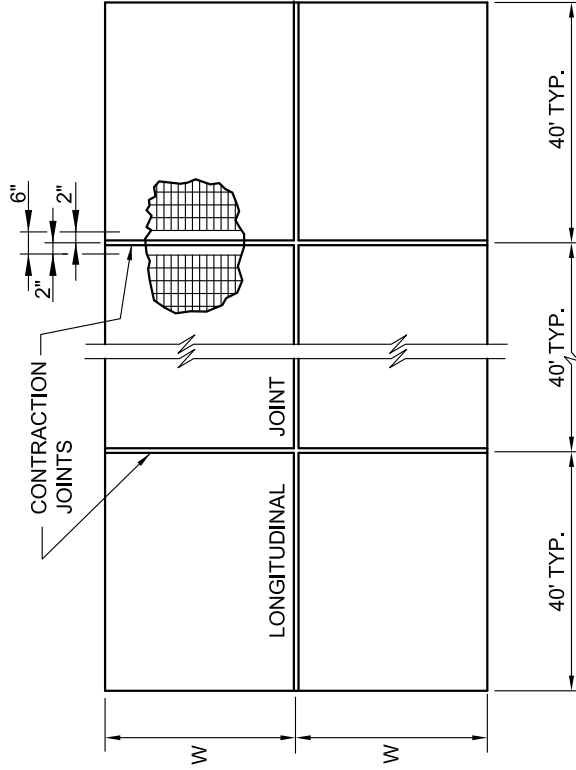
PLAN

LONGITUDINAL TIE DEVICE
SEE PLATE BC 572.61-1

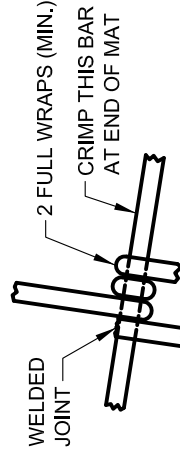


SECTION A-A

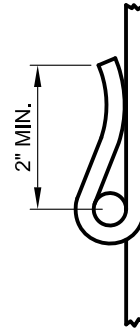
| LANE W | MESH | | WEIGHT PER MAT LBS. |
|-----------|--------|--------|------------------------|
| | WIDTH | LENGTH | |
| 8' | 7'-6" | 14' | 62 |
| 10' | 9'-6" | 14' | 76 |
| 11' | 10'-6" | 14' | 84 |
| 12' | 11'-6" | 14' | 91 |
| 13' | 12'-6" | 14' | 96 |



PLAN



TYPE "B"



TYPE "A"

TYPES OF HINGES

NOTES:

1. HINGES TO BE LOCATED ON THE LONG BAR NEAREST THE CENTER OF THE MESH. THE BAR AT WHICH HINGES ARE USED SHALL BE OFFSET 1/2".
2. OTHER TYPES MAY BE USED UPON APPROVAL OF THE ENGINEER.
3. EXPANSION JOINTS ARE NOT REQUIRED.



APPROVED:

Primal Devita
DIVISION CHIEF, TRANSPORTATION ENGINEERING
AND CONSTRUCTION
Khalil Zare
DIRECTOR, DEPARTMENT OF TRANSPORTATION

CITY OF BALTIMORE
DEPARTMENT OF TRANSPORTATION
TRANSPORTATION ENGINEERING AND
CONSTRUCTION

**PLACEMENT OF BAR MATS
REINFORCED CONCRETE
PAVEMENT**

| ISSUED | REVISED | REVISED |
|---------------------------|--------------|---------|
| 8 / 2010 | | |
| STANDARD NO. BC 572.01 | | |
| SCALE: NONE | SHEET 1 OF 1 | |