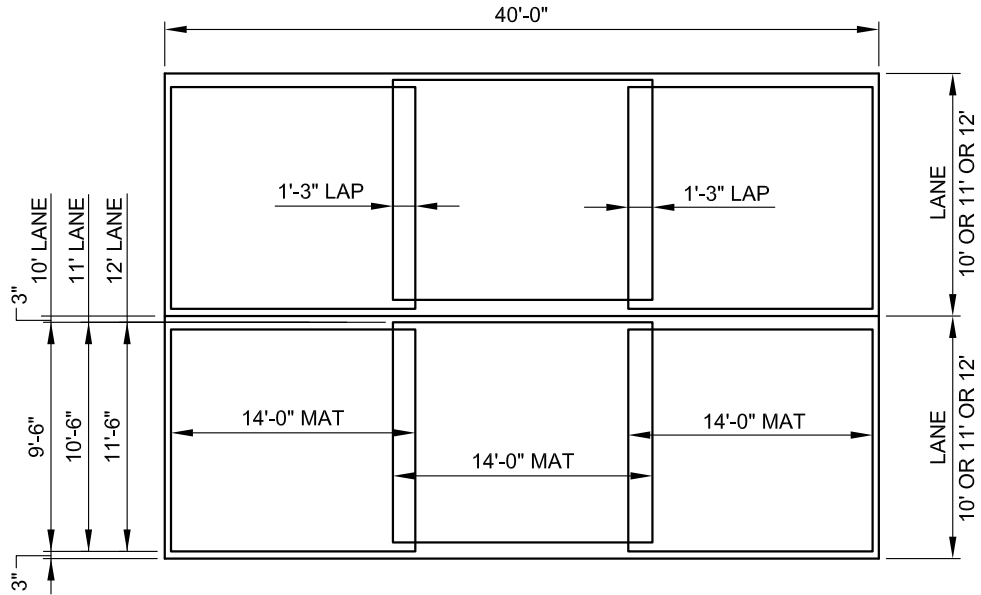
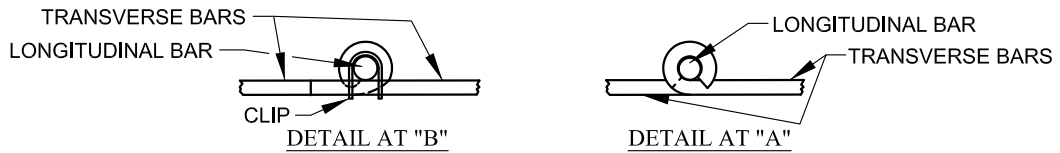


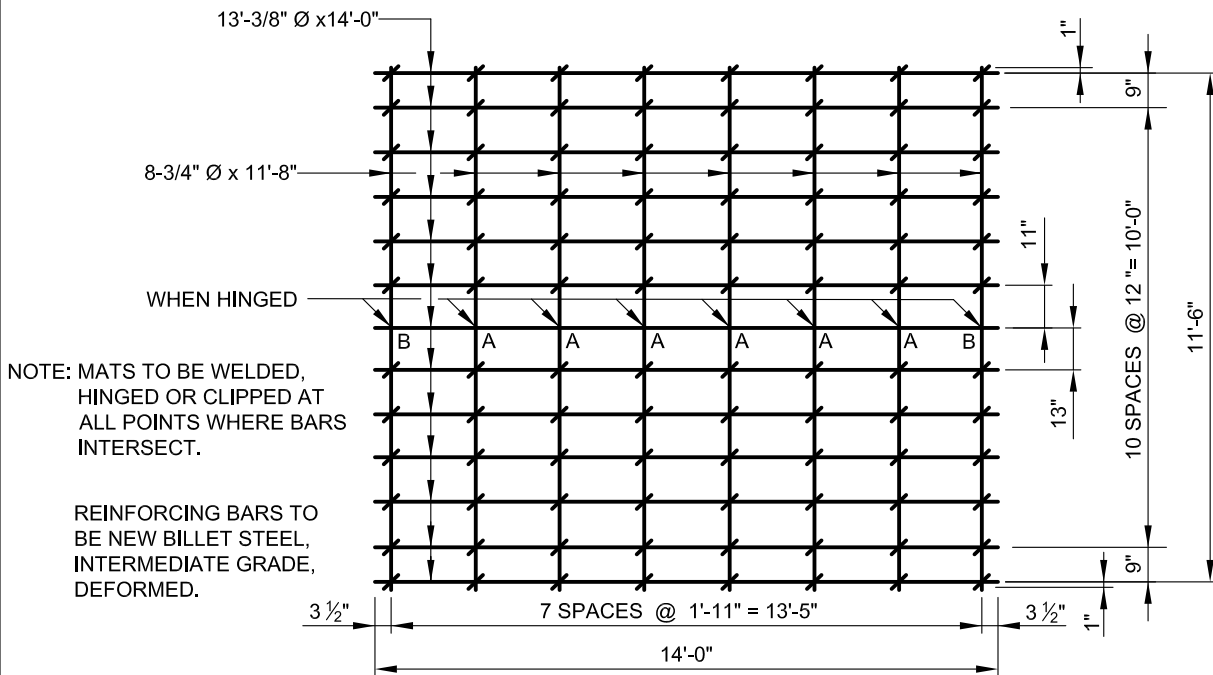
LONGITUDINAL SECT. AREA SQ. IN. PER FT. 0.119
 TRANSVERSE SECT AREA SQ. IN. PER FT. 0.061
 WEIGHT PER 100 SQ. FT. 64 LBS.



TYPICAL PAVING SECTION



DETAILS FOR HINGED MAT



NOTE: MATS TO BE WELDED,
 HINGED OR CLIPPED AT
 ALL POINTS WHERE BARS
 INTERSECT.

REINFORCING BARS TO
 BE NEW BILLET STEEL,
 INTERMEDIATE GRADE,
 DEFORMED.

NOTE: MATS TO BE PLACED WITH THE TOP
 OF THE LONGITUDINAL BAR 2 1/2"
 BELOW THE TOP OF PAVEMENT.

BAR MAT FOR 12'-0" LANE

NOTE: HINGED MATS MAY BE USED
 AT CONTRACTOR'S OPTION.

THE BAR AT WHICH HINGES ARE
 USED SHALL BE OFFSET 1"



APPROVED:
Primal Devita
 DIVISION CHIEF, TRANSPORTATION ENGINEERING
 AND CONSTRUCTION
Khalil Zare
 DIRECTOR, DEPARTMENT OF TRANSPORTATION

CITY OF BALTIMORE
 DEPARTMENT OF TRANSPORTATION
 TRANSPORTATION ENGINEERING AND
 CONSTRUCTION

**CLIPPED OR WELDED
 BAR MATS
 REINF. CONC. PAVEMENT**

ISSUED	REVISED	REVISED
8 / 2010		
STANDARD NO. BC 572.02		
SCALE: NONE	SHEET 1 OF 1	