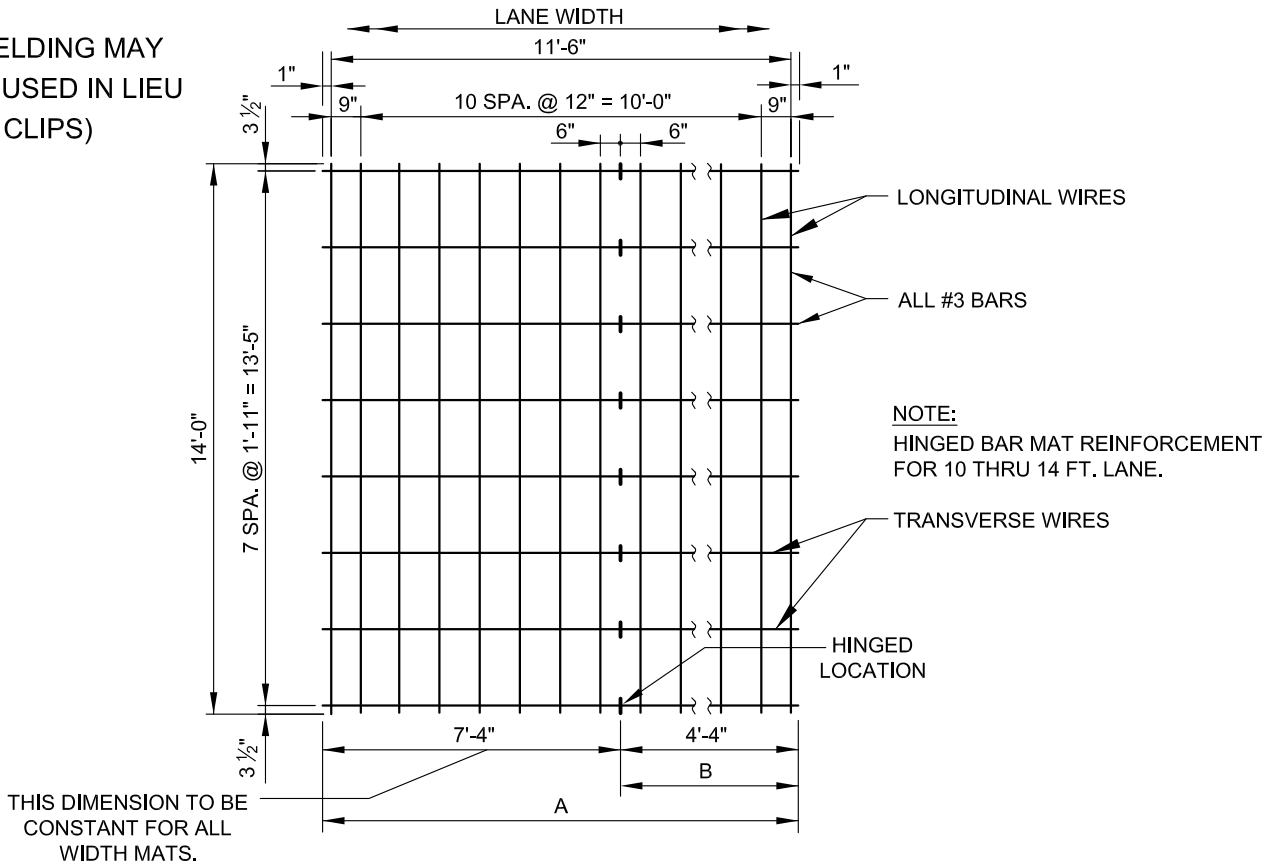
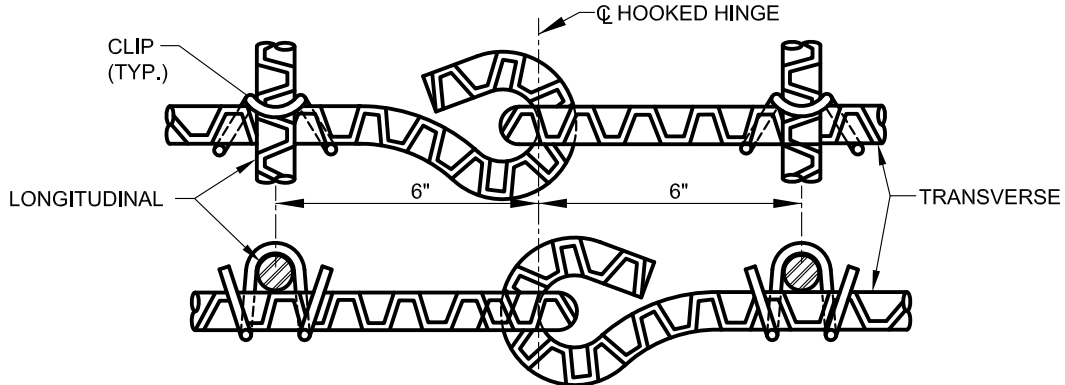


(WELDING MAY BE USED IN LIEU OF CLIPS)



HOOKED HINGE BAR MAT REINFORCEMENT FOR 12'-0" LANE



HOOKED HINGE DETAIL

LANE WIDTH	A	B	MATERIAL		CLIPS	TOTAL WT	WT/100 ^{sq ft}
			FOR CONSTANT SECTION	FOR VARIABLE SECTION			
10'	9'-8"	2'-4"	8 - #3 @ 14'-0" = 42.11 LB.	3 - #3 @ 14'-0" = 15.79 LB.	88	90.03	66.50
			8 - #3 @ 7'-6" = 22.56 LB.	8 - #3 @ 2'-6" = 7.52 LB.			
11'	10'-8"	3'-4"	8 - #3 @ 14'-0" = 42.11 LB.	4 - #3 @ 14'-0" = 21.06 LB.	96	98.49	65.93
			8 - #3 @ 7'-6" = 22.56 LB.	8 - #3 @ 3'-6" = 10.53 LB.			
12'	11'-8"	4'-4"	8 - #3 @ 14'-0" = 42.11 LB.	5 - #3 @ 14'-0" = 26.32 LB.	104	106.97	65.47
			8 - #3 @ 7'-6" = 22.56 LB.	8 - #3 @ 4'-6" = 13.54 LB.			
13'	12'-8"	5'-4"	8 - #3 @ 14'-0" = 42.11 LB.	6 - #3 @ 14'-0" = 31.58 LB.	112	115.01	64.83
			8 - #3 @ 7'-6" = 22.56 LB.	8 - #3 @ 5'-6" = 16.54 LB.			
14'	13'-8"	6'-4"	8 - #3 @ 14'-0" = 42.11 LB.	7 - #3 @ 14'-0" = 36.85 LB.	120	123.88	64.73
			8 - #3 @ 7'-6" = 22.56 LB.	8 - #3 @ 6'-6" = 19.55 LB.			



APPROVED:
Primal Devita
 DIVISION CHIEF, TRANSPORTATION ENGINEERING AND CONSTRUCTION
Khalil Zae
 DIRECTOR, DEPARTMENT OF TRANSPORTATION

CITY OF BALTIMORE
DEPARTMENT OF TRANSPORTATION
TRANSPORTATION ENGINEERING AND CONSTRUCTION

HINGED CLIPPED BAR MAT REINFORCED CONCRETE PAVEMENT

ISSUED	REVISED	REVISED
8 / 2010		
STANDARD NO. BC 572.04		
SCALE: NONE	SHEET 1 OF 1	