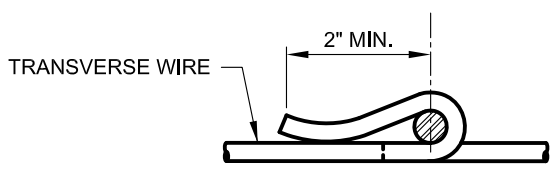
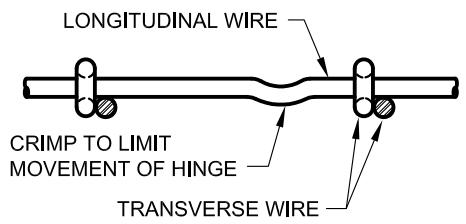


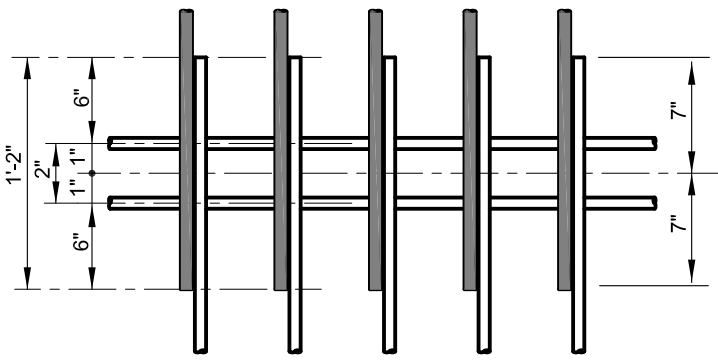
**HINGE DETAIL**



**SECTION A-A**



**TYPICAL CRIMP DETAIL**



**LAP DETAIL**

- \* NO. 2 GA. LONGITUDINAL WIDTH**
- 28 REQUIRED FOR 14'-0" LANE
  - 26 REQUIRED FOR 13'-0" LANE
  - 24 REQUIRED FOR 12'-0" LANE
  - 22 REQUIRED FOR 11'-0" LANE
  - 20 REQUIRED FOR 10'-0" LANE
  - 18 REQUIRED FOR 9'-0" LANE
  - 16 REQUIRED FOR 8'-0" LANE

WHERE LANE WIDTHS ARE 14'-0" OR LESS, THESE DIMENSIONS APPLY

LANE WIDTH	WIDTH 'A'	WIDTH 'B'	WIDTH 'C'	OVERALL WIDTH OF MESH	HINGED
14'-0"	14 SPA. @ 6" = 7'-0"	11 SPA. @ 6" = 5'-6"	—————	13'-6"	YES
13'-0"	14 SPA. @ 6" = 7'-0"	9 SPA. @ 6" = 4'-6"	—————	12'-6"	YES
12'-0"	14 SPA. @ 6" = 7'-0"	7 SPA. @ 6" = 3'-6"	—————	11'-6"	YES
11'-0"	14 SPA. @ 6" = 7'-0"	5 SPA. @ 6" = 2'-6"	—————	10'-6"	YES
10'-0"	14 SPA. @ 6" = 7'-0"	3 SPA. @ 6" = 1'-6"	—————	9'-6"	YES
9'-0"	—————	—————	17 SPA. @ 6" = 8'-6"	8'-6"	NO
8'-0"	—————	—————	15 SPA. @ 6" = 7'-6"	7'-6"	NO



APPROVED:  
*Primal DeWitt*  
 DIVISION CHIEF, TRANSPORTATION ENGINEERING AND CONSTRUCTION  
*Khalil Zare*  
 DIRECTOR, DEPARTMENT OF TRANSPORTATION

**CITY OF BALTIMORE**  
**DEPARTMENT OF TRANSPORTATION**  
**TRANSPORTATION ENGINEERING AND CONSTRUCTION**

**WELDED WIRE MESH REINFORCED CONCRETE PAVEMENT**

ISSUED	REVISED	REVISED
8 / 2010		
<b>STANDARD NO.</b> BC 572.05		
SCALE : NONE	SHEET 1 OF 1	