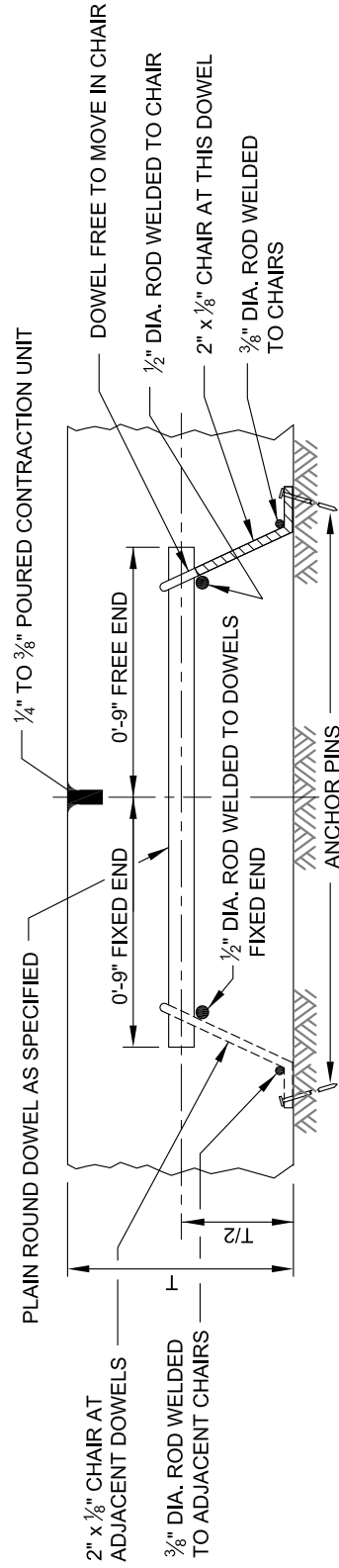


PLAN OF CONTRACTION JOINT

NOTE:

ALL CHAIRS TO HAVE 1/2" DIA. HOLE (TYPICAL) USE 6 ANCHOR PINS AS SHOWN. IF NECESSARY PLACE PIN IN ADJACENT HOLE. ANCHOR PINS TO BE A MIN. 5/16" DIA. BARS 12" LONG AND POINTED ON ONE END. THE SHORT END WILL BE A MIN. OF 2" IN LENGTH.



SECTION THRU CONTRACTION JOINT

NOTE:

THE DIAMETER OF ALL DOWELS SHALL BE AS SHOWN ON BC 572.21. FREE END OF DOWELS SHALL BE COATED AFTER INSTALLATION WITH GRAPHITE GREASE.



APPROVED: *Primal DeWitt*
 DIVISION CHIEF, TRANSPORTATION ENGINEERING AND CONSTRUCTION
Khalil Zare
 DIRECTOR, DEPARTMENT OF TRANSPORTATION

CITY OF BALTIMORE
 DEPARTMENT OF TRANSPORTATION
 ENGINEERING AND CONSTRUCTION

**LOAD TRANSFER ASSEMBLY
 CONTRACTION JOINTS**

ISSUED	REVISED	REVISED
8 / 2010		
STANDARD NO. BC 572.25		
SCALE: NONE	SHEET 1 OF 1	