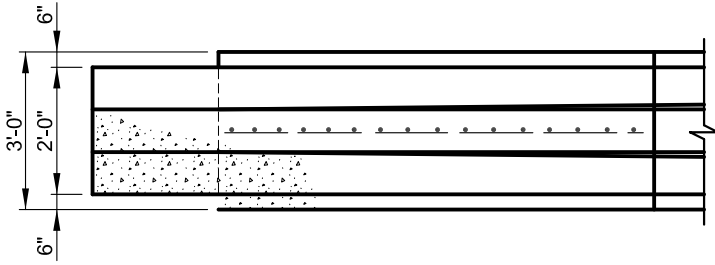
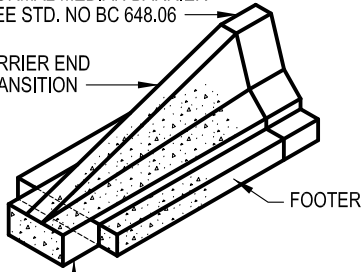


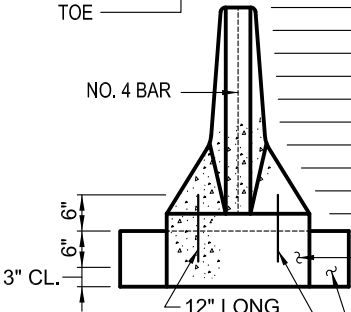
NORMAL MEDIAN BARRIER
SEE STD. NO BC 648.06

BARRIER END
TRANSITION



END
TRANSITION
TOE

NO. 4 BAR



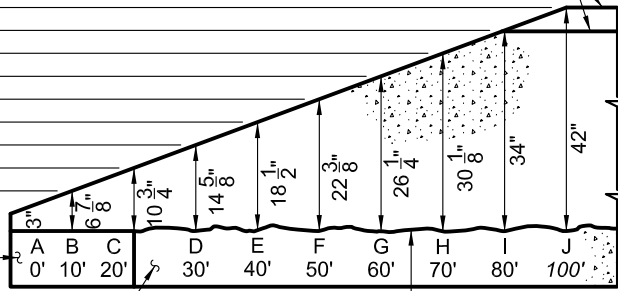
END VIEW

TOP OF BARRIER FOOTER

TRAFFIC BARRIER END
TRANSITION TOE POURED
MONOLITHIC WITH THE
TRAFFIC BARRIER END
TRANSITION

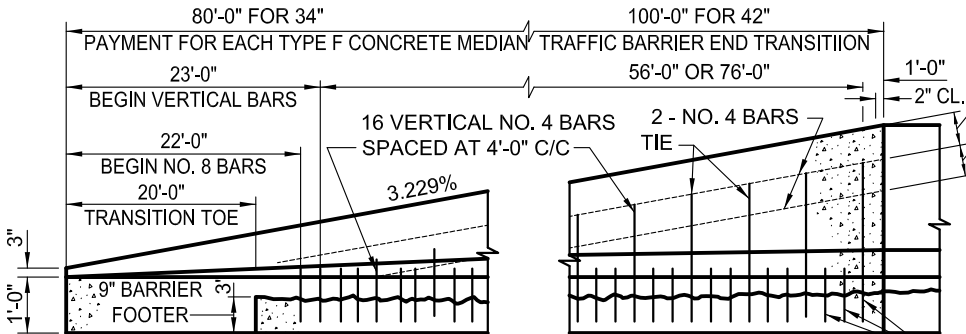
BARRIER FOOTER (SEE NOTE 1)

NORMAL BARRIER



ELEVATION

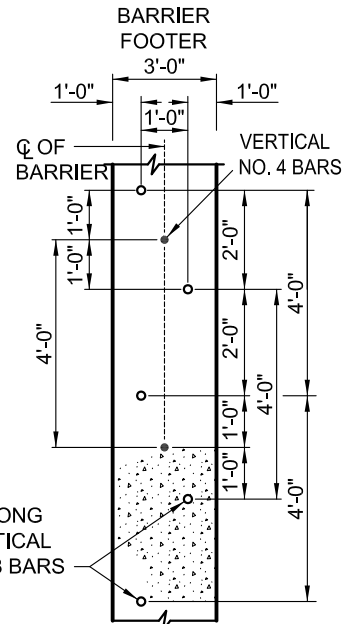
ROUGHEN CONSTR.
JOINT. (TYPICAL FOR
CONSTR. ON BARRIER
FOOTER & EXIST.
RIGID PAVEMENT)



TWO ROWS OF 12" LONG VERTICAL NO. 8 BARS. DISTANCE BETWEEN THE BARS IN EACH ROW SHALL BE 4'-0" C/C. ONE ROW OF THE BARS SHALL BE STAGGERED WITH THE OTHER. CENTER LINE DISTANCE BETWEEN THE BARS SHALL BE 2'-0". THE VERTICAL NO. 4 BARS SHALL BE STAGGERED WITH THE NO. 8 BARS (SEE BAR LAYOUT)

REINFORCEMENT STEEL DETAILS

SEE STANDARD FOR SPACING



**PLAN VIEW
END TRANSITION
BAR LAYOUT**

NOTES

1. THE TRAFFIC BARRIER END TRANSITION SHALL BE CONSTRUCTED USING THE FIXED FORM METHOD. NO FOOTER IS REQUIRED WHEN BARRIER IS CONSTRUCTED ON EXISTING RIGID PAVEMENT. BARRIER AND FOOTER SHALL BE CAST SEPARATELY. MONOLITHIC PLACEMENT NOT PERMITTED. SEE STD. BC 648.06 FOR OTHER BARRIER DETAILS.
2. THE TRAFFIC BARRIER END TRANSITION BARRIER FOOTER SHALL BE CONSTRUCTED USING CONCRETE MIX NO. 6 (4500 PSI).
3. ALL REINFORCEMENT BARS, INCLUDING ENDS AND TIES, SHALL BE EPOXY COATED. ALL BAR LAPS TO BE 30 BAR DIAMETERS. TIE BARS TOGETHER.
4. THIS TRAFFIC BARRIER END TRANSITION IS PROHIBITED WHEN THE DESIGN SPEED IS 45 MPH OR GREATER. THE ENGINEER MUST DETERMINE THE TYPE OF END TREATMENT FOR DESIGN SPEEDS OVER 45 MPH.
5. COST OF THE CONCRETE BARRIER FOOTER (IF REQUIRED) SHALL BE INCIDENTAL TO THE CONTRACT UNIT PRICE PER EACH FOR THE 34 INCH OR 42 INCH F SHAPE CONCRETE MEDIAN TRAFFIC BARRIER END TRANSITION.
6. WHEN THE BARRIER END TRANSITION IS CONSTRUCTED ON EXISTING RIGID PAVEMENT, THE COST OF ROUGHENING THE PAVEMENT SURFACE, EXCAVATION FOR TRANSITION TOE, REINFORCEMENT, DRILLED HOLES, GROUT, LABOR, TOOLS, EQUIPMENT, ETC., SHALL BE INCIDENTAL TO THE CONTRACT UNIT PRICE PER EACH FOR THE ITEMS SPECIFIED IN NOTE 5.
7. TOLERANCES IN DIMENSIONS SHOWN SHALL BE WITHIN 1/4".



APPROVED:

Primal Dev...
DIVISION CHIEF, TRANSPORTATION ENGINEERING
AND CONSTRUCTION
Khalil Z...
DIRECTOR, DEPARTMENT OF TRANSPORTATION

CITY OF BALTIMORE
DEPARTMENT OF TRANSPORTATION
TRANSPORTATION ENGINEERING AND
CONSTRUCTION

42 INCH F SHAPE CONCRETE MEDIAN
TRAFFIC BARRIER END TRANSITION

ISSUED	REVISED	REVISED
8 / 2010		
STANDARD NO. BC 648.03		
SCALE: NONE	SHEET 1 OF 1	