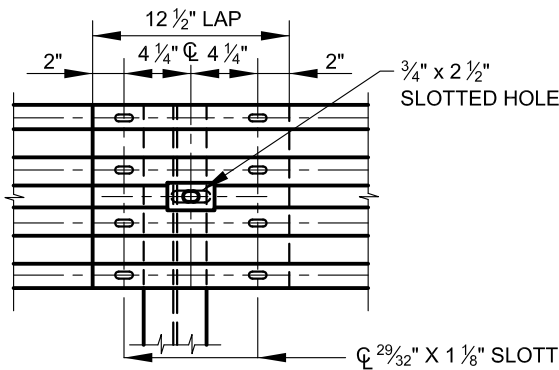
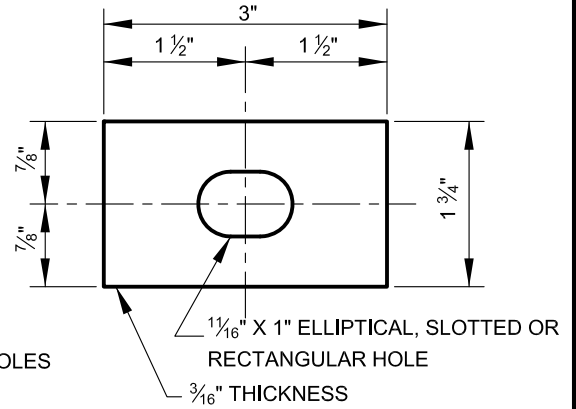


LAP IN DIRECTION OF TRAFFIC

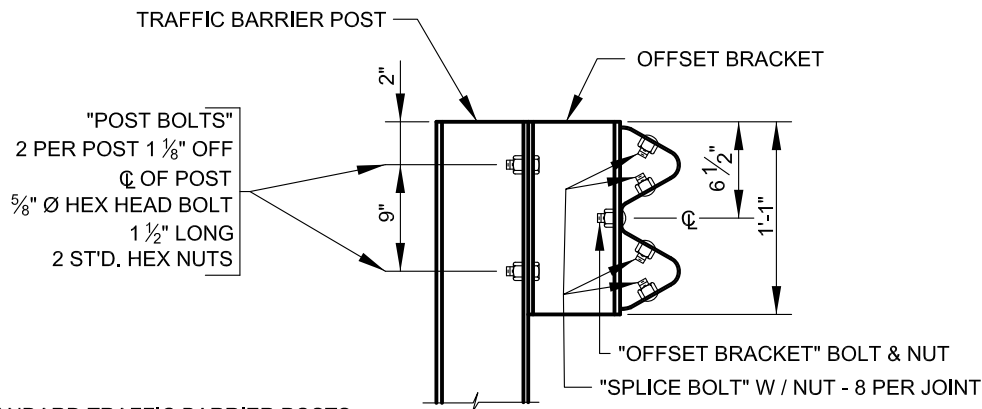


NOTE: SPLICE BOLTS NOT SHOWN

TRAFFIC BARRIER RAIL SPLICE

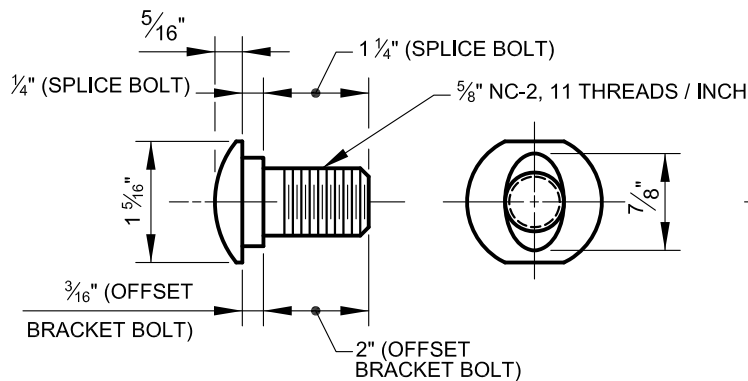


STANDARD RECTANGULAR GALVANIZED WASHER

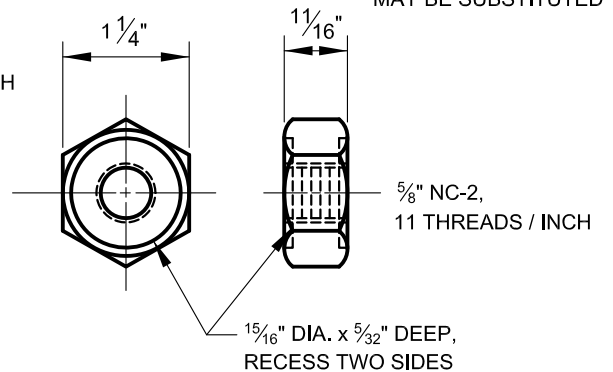


FOR STANDARD TRAFFIC BARRIER POSTS SEE STD. NO. BC 660.01

OFFSET BRACKET
W 6 x 8.5



"SPLICE BOLT" & "OFFSET BRACKET BOLT"
8 PER JOINT
1 1/4" LONG



NUT
9 PER SPLICE

ALTERNATE-SINGLE RECESS NUTS MAY BE SUBSTITUTED



APPROVED:
Frank Murphy
DEPUTY DIRECTOR - OPERATIONS
Khalil Zane
DIRECTOR, DEPARTMENT OF TRANSPORTATION

CITY OF BALTIMORE
DEPARTMENT OF TRANSPORTATION
TRAFFIC DIVISION

TRAFFIC BARRIER W BEAM SPLICE JOINT

ISSUED	REVISED	REVISED
8 / 2010		

STANDARD NO.
BC 660.03

SCALE : NONE SHEET 1 OF 1