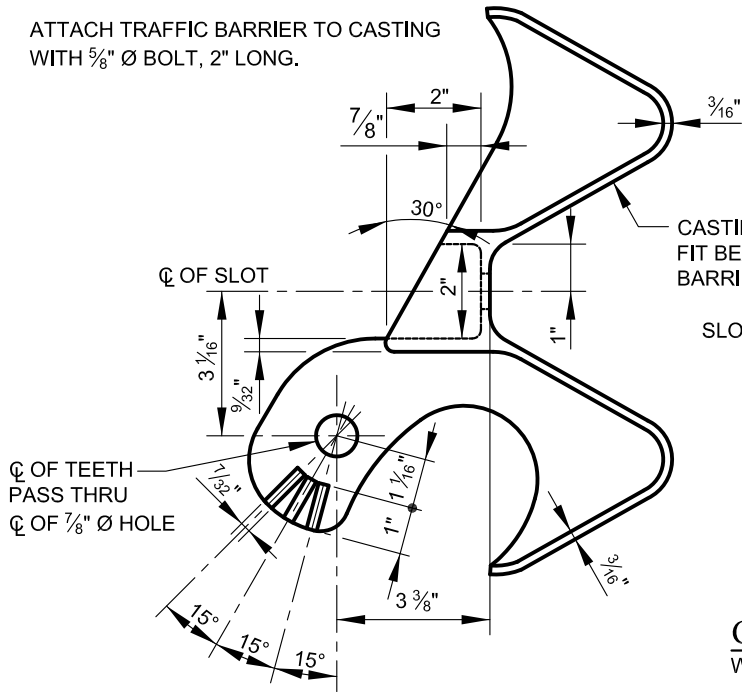
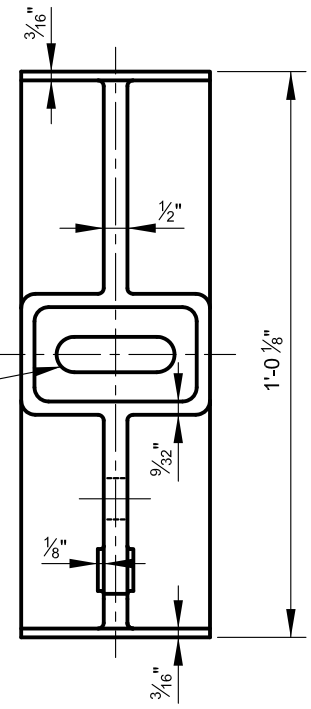


ATTACH TRAFFIC BARRIER TO CASTING
WITH $\frac{5}{8}$ " \varnothing BOLT, 2" LONG.



CASTING SURFACE TO FIT BEAM TRAFFIC BARRIER

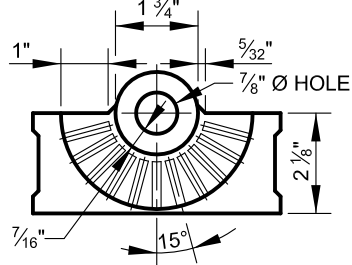
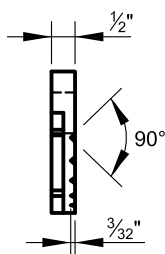
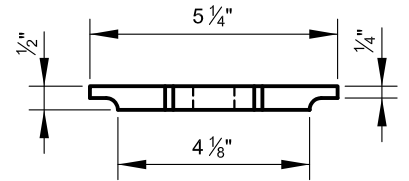
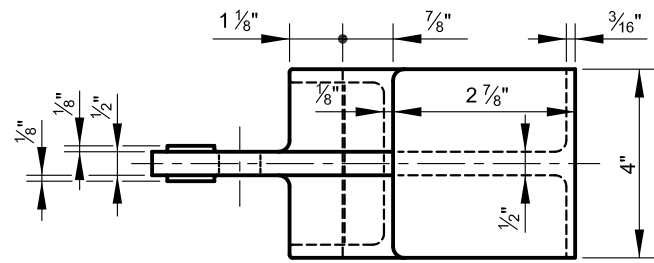
SLOT $\frac{3}{4}$ " X $2\frac{1}{2}$ "



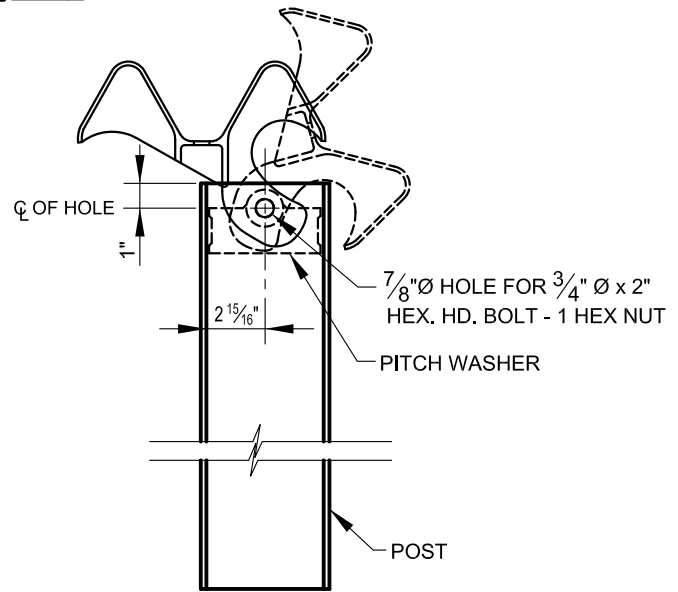
CASTING
WEIGHT: 8 LBS.

MATERIAL REQUIREMENTS:


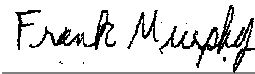
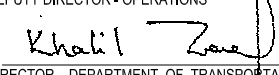
1. THE METAL CASTING SHALL CONFORM TO THE A.S.T.M. DESIGNATION A-220, GRADE 45010.
2. THE ZINC COATING SHALL CONFORM TO THE A.S.T.M. DESIGNATION A-153, CLASS A.
3. ALL PARTS TO BE GALVANIZED.



PITCH WASHER
WEIGHT: 1 LB.



METHOD OF ANCHORAGE

	APPROVED:  DEPUTY DIRECTOR - OPERATIONS  DIRECTOR, DEPARTMENT OF TRANSPORTATION	CITY OF BALTIMORE DEPARTMENT OF TRANSPORTATION TRAFFIC DIVISION	ISSUED 8 / 2010	REVISED	REVISED	
	TRAFFIC BARRIER W BEAM ANCHORAGE CASTING			STANDARD NO. BC 660.32		
				SCALE: NONE	SHEET 1 OF 1	