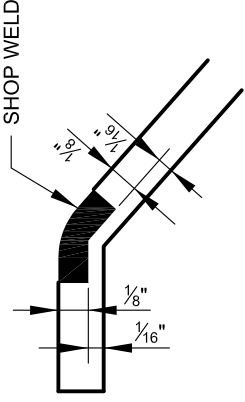


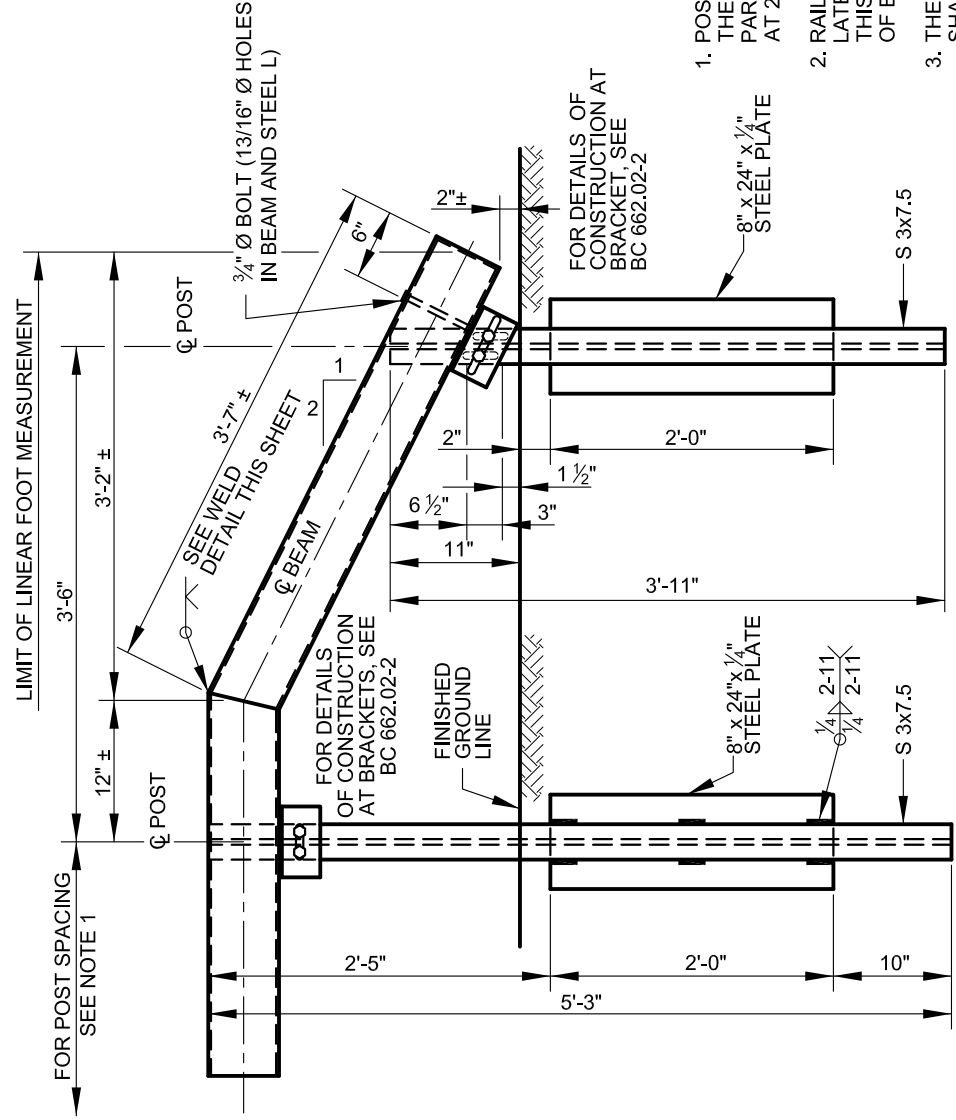
END COVER PLATE



BOX BEAM SHOP WELD DETAIL

GENERAL NOTES

1. POST SPACING SHALL BE 6'-0" C/C EXCEPT IN VICINITY OF THE JUNCTION OF THE TRAFFIC BARRIER AND BRIDGE PARAPET. AT BRIDGE APPROACH USE 8 POST SPACES AT 2'-0" C/C.
2. RAIL ALIGNMENT TO BE STRAIGHT AT SPLICES, NO LATERAL BENDS PERMITTED WITHIN THE SPLICE. THIS DOES NOT PRECLUDE THE SHOP FABRICATION OF BEND SPLICES.
3. THE LINE OF BOX BEAM TRAFFIC BARRIER, WHEN COMPLETED, SHALL PRESENT A SMOOTH PLEASING GRADE LINE IN BOTH HORIZONTAL AND VERTICAL PLANES.
4. CURVED BOX BEAM TRAFFIC BARRIER FOR CURVES GREATER THAN 8', SHALL BE SHOP WORKED TO THE REQUIRED CURVATURE.
5. BOX BEAM TRAFFIC BARRIER TO BE PROVIDED IN MINIMUM LENGTHS 18'-0" NOMINAL.
6. REINFORCED RAIL SECTION USE POST SPACING OF 3'-0" C/C AT FIXED OBJECT 4' OR LESS FROM BACK OF TRAFFIC BARRIER.



ELEVATION
SCALE: 3/4" = 1'-0"



APPROVED:
Frank Murphy
DEPUTY DIRECTOR - OPERATIONS
Khalil Zane
DIRECTOR, DEPARTMENT OF TRANSPORTATION

CITY OF BALTIMORE
DEPARTMENT OF TRANSPORTATION
TRAFFIC DIVISION

TRAFFIC BARRIER BOX BEAM
SHOULDER BARRIER
TYPICAL END TREATMENT

ISSUED	REVISED	REVISED
8 / 2010		
STANDARD NO. BC 662.02-1		
SCALE: NONE	SHEET 1 OF 2	