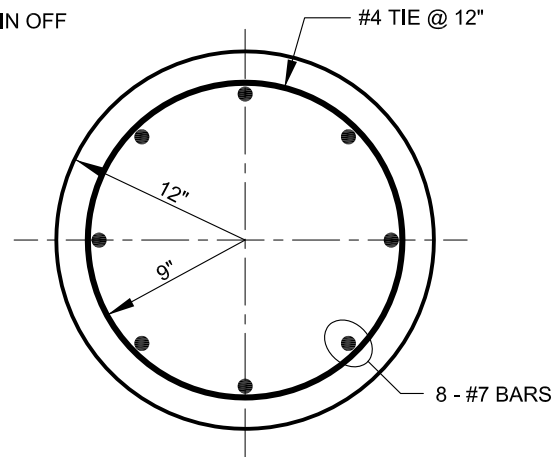
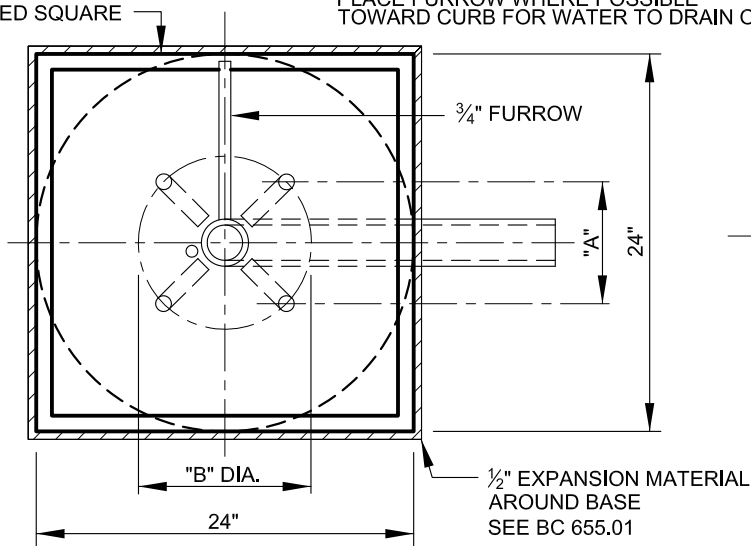


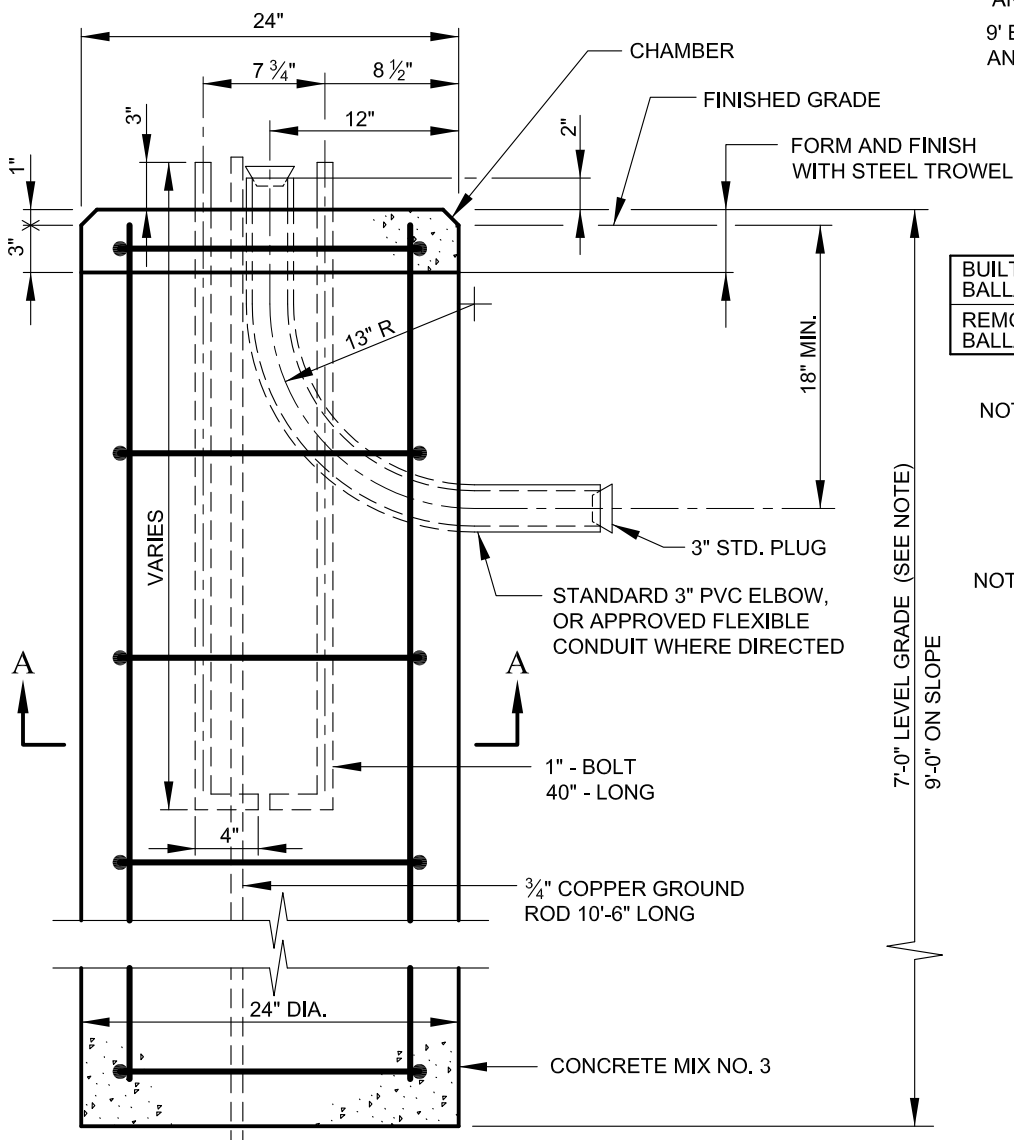
TOP 6" TO BE FORMED SQUARE

PLACE FURROW WHERE POSSIBLE TOWARD CURB FOR WATER TO DRAIN OFF



SECTION A-A

REINFORCING: 7' BASE MUST HAVE 8 - #7 BAR AND 8 - #4 TIES AT 12" C/C
 9' BASE MUST HAVE 8 - #7 BAR AND 10 - #4 TIES AT 12" C/C



	"A" BOLT SPACE	"B" BOLT CIRCLE DIA.
BUILT IN BALLAST	7 3/4"	11"
REMOTE BALLAST	10 5/8"	15"

NOTE: 7' BASE FOR MAST ARMS UP TO 15'
 9' BASE FOR MAST ARMS 15' AND LONGER

NOTE: POLE TO BE 2'-6" BACK FROM FACE OF CURB UNLESS OTHERWISE NOTED



APPROVED:
Primal DeLuca
 DIVISION CHIEF, TRANSPORTATION ENGINEERING AND CONSTRUCTION
Khalil Zae
 DIRECTOR, DEPARTMENT OF TRANSPORTATION

CITY OF BALTIMORE
 DEPARTMENT OF TRANSPORTATION
 TRANSPORTATION ENGINEERING AND CONSTRUCTION

ROADWAY PEDESTAL BASE FOR LIGHT POLES - AUGURED

ISSUED	REVISED	REVISED
8 / 2010		

STANDARD NO.
 BC 801.01

SCALE : NONE SHEET 1 OF 1