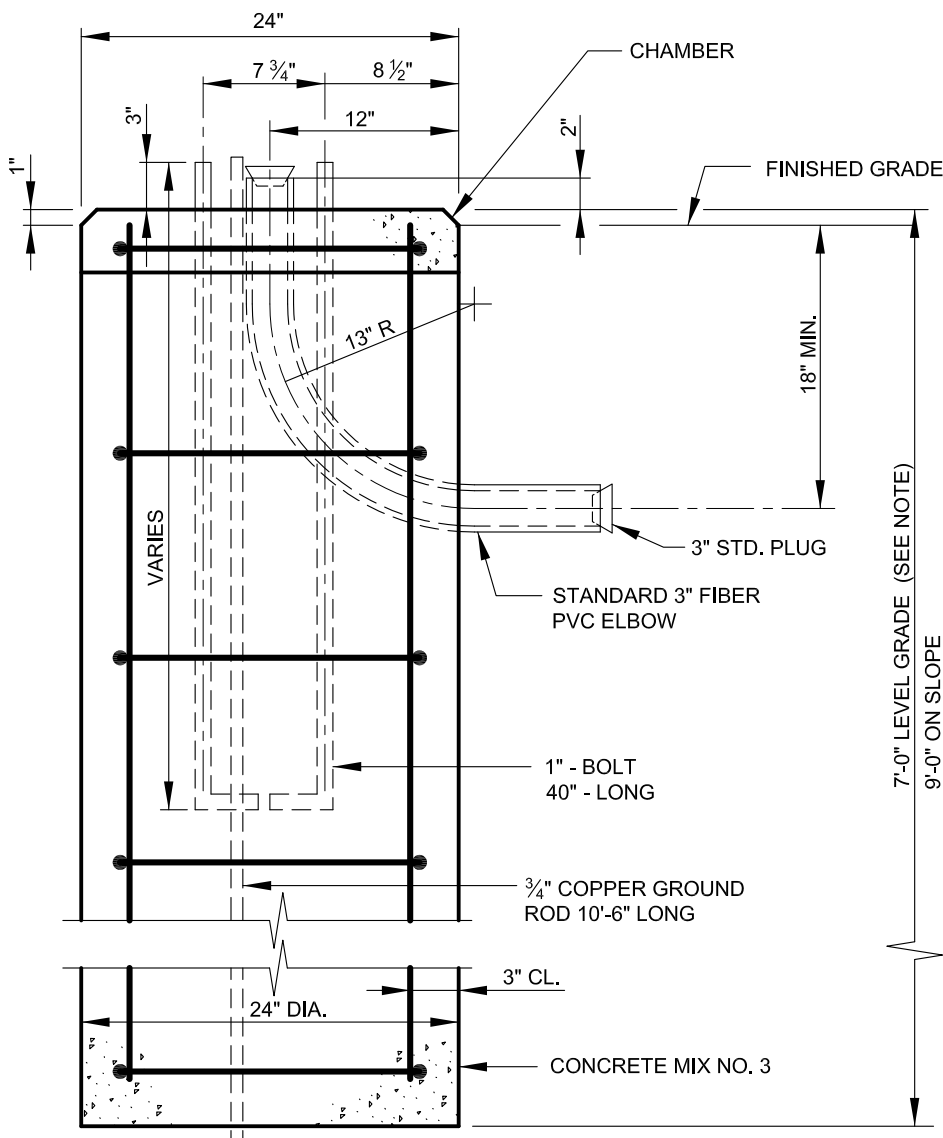


	"A" BOLT SPACE	"B" BOLT CIRCLE DIA.
BUILT IN BALLAST	7 3/4"	11"
REMOTE BALLAST	10 5/8"	15"

REINFORCING: 7' BASE MUST HAVE 8 - #7 BAR (ONE EACH CORNER) AND 8 - #4 TIES AT 12" C/C

9' BASE MUST HAVE 8 - #7 BAR (ONE EACH CORNER) AND 10 - #4 TIES AT 12" C/C



NOTE: 7' BASE FOR MAST ARMS UP TO 15'
9' BASE FOR MAST ARMS 15' AND LONGER

NOTE: POLE TO BE 2'-6" BACK FROM FACE OF CURB UNLESS OTHERWISE NOTED



APPROVED:

Primal Devita

DIVISION CHIEF, TRANSPORTATION ENGINEERING AND CONSTRUCTION

Khalil Zae

DIRECTOR, DEPARTMENT OF TRANSPORTATION

CITY OF BALTIMORE
DEPARTMENT OF TRANSPORTATION
TRANSPORTATION ENGINEERING AND CONSTRUCTION

ROADWAY PEDESTAL BASE
FOR LIGHT POLES - SQUARE

ISSUED	REVISED	REVISED
8 / 2010		

STANDARD NO.
BC 801.02

SCALE : NONE

SHEET 1 OF 1