

This Standard covers the installation of ducts in a steel casing pipe.

A. DUCT PLACEMENT

1. After the casing is installed, check to make sure it is clear of obstructions.
2. Only PVC (DB) duct shall be installed in casings. The Material No's are: 3" (12-745), 4" (12-844), 5" (12-748), and 6" (12-A90) Every piece shall be checked for defects.
3. Ducts shall be installed using only Bore or Casing Spacers. The maximum separation between spacers shall be 5 feet.
4. Great care must be used to cement all joints. The pressure created while pumping grout could force grout through a joint if not properly cemented.
5. A wooden cradle should be fabricated to hold the ducts in the proper formation while the spacers are placed over each duct prior to banding. The cradle also keeps the duct formation lined up with the casing entrance.
6. Wrap a strap (preferably non-metallic) around duct formation not more than 6" from the casing spacer. Do not pull strap too tight to deform the duct but just enough to cause the duct to pinch the spacer.
7. Use a push plate (Figure #1) to advance the duct formation into the casing. The plate shall be large enough to bear against the ends of all the ducts.

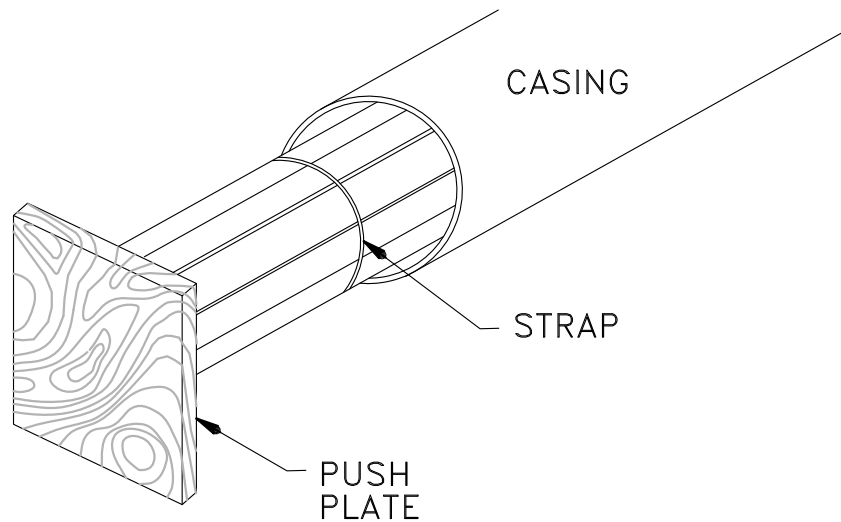

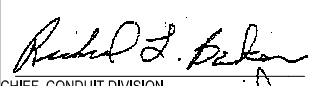



FIGURE 1

8. Ducts should extend a minimum of 2' beyond the casing at both ends. Do not connect to any existing ducts or extend ducts until grouting has been installed and ducts rodded and mandreled.

	APPROVED:  RICHARD L. BAKER CHIEF, CONDUIT DIVISION	CITY OF BALTIMORE DEPARTMENT OF TRANSPORTATION CONDUIT DIVISION	ISSUED	REVISED	REVISED
	 KHALIL ZARE DIRECTOR, DEPARTMENT OF TRANSPORTATION	CONDUIT SECTIONS IN CASING PIPE	8 / 2010	STANDARD NO. BC 803.01-2	
			SCALE: NONE	SHEET 2 OF 5	