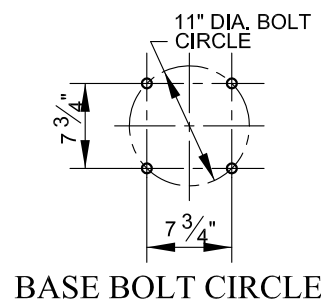
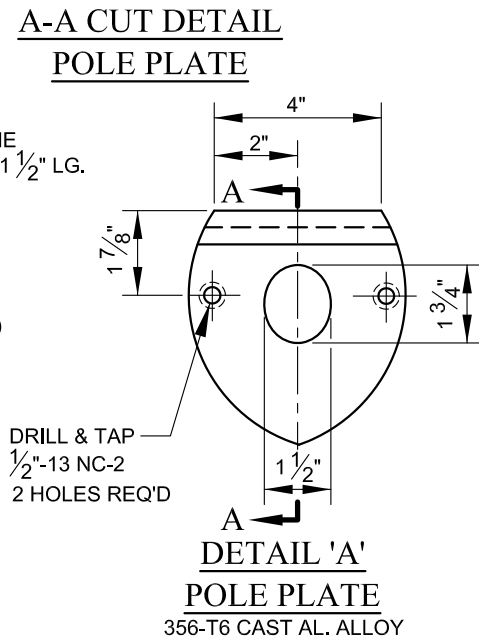
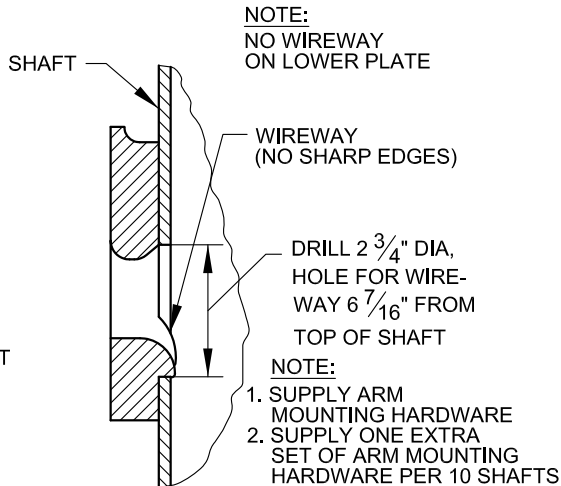
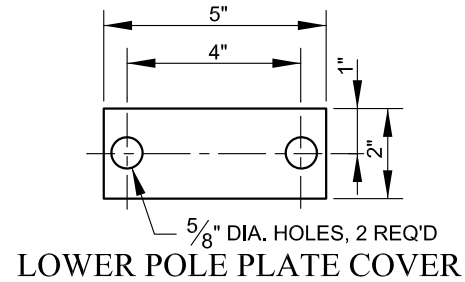
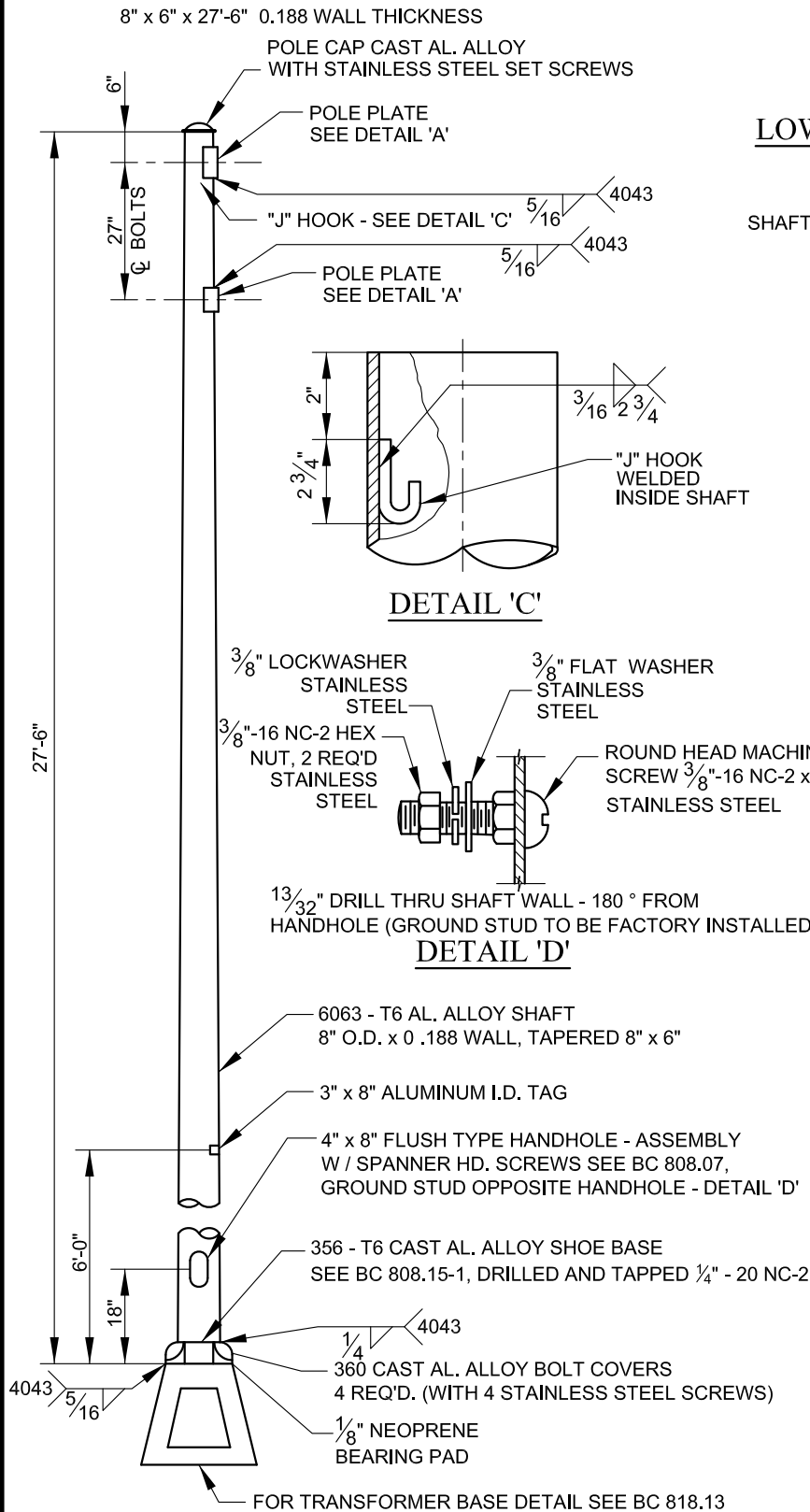


NOTE:
6063 ASSEMBLY .375 WALL OR LESS
TO BE HEAT TREATED AFTER WELDING



APPROVED:
Primal Dev...
DIVISION CHIEF, TRANSPORTATION ENGINEERING AND CONSTRUCTION
Khalil Z...
DIRECTOR, DEPARTMENT OF TRANSPORTATION

CITY OF BALTIMORE
DEPARTMENT OF TRANSPORTATION
TRANSPORTATION ENGINEERING AND CONSTRUCTION

**TYPICAL LIGHT STANDARD
30' AW POLE ON
TRANSFORMER BASE**

ISSUED	REVISED	REVISED
8 / 2010		
STANDARD NO. BC 808.02-2		
SCALE : NONE	SHEET 2 OF 2	