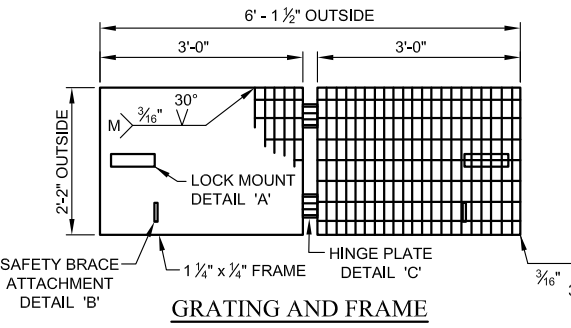
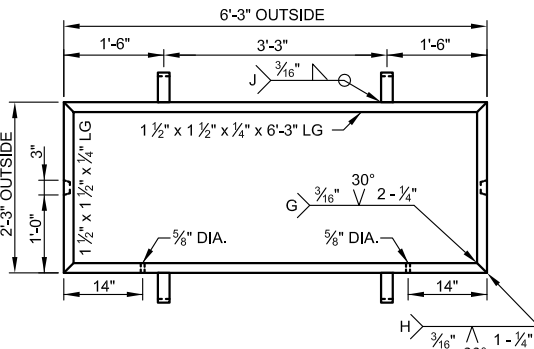
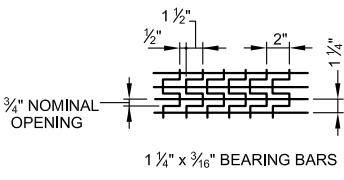
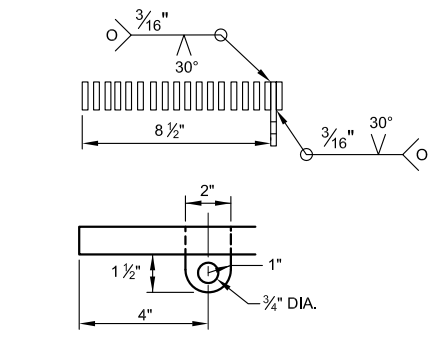
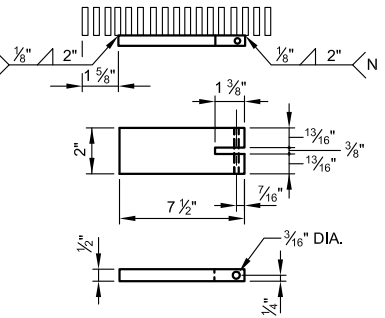
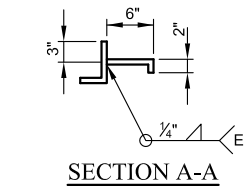



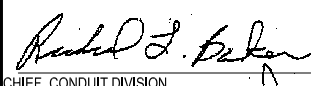
- A) $\frac{5}{16}$ " SINGLE - VEE OUTSIDE OF ANGLE $5\frac{1}{2}$ " LG
- B) $\frac{5}{16}$ " SINGLE - VEE OUTSIDE OF ANGLE 6" LG
- C) $\frac{3}{16}$ " SINGLE - VEE INSIDE OF ANGLE $5\frac{1}{2}$ " LG
- D) $\frac{5}{16}$ " SINGLE - VEE INSIDE OF ANGLE $3\frac{1}{2}$ " LG
- E) $\frac{1}{4}$ " FILLET ALL AROUND
- F) $\frac{1}{4}$ " FILLET 1" LG, 1" O.C. BOTH SIDES



- G) $\frac{3}{16}$ " SINGLE - VEE OUTSIDE OF ANGLE 2 1/2" LONG
- H) $\frac{3}{16}$ " SINGLE - VEE OUTSIDE OF ANGLE 1 1/2" LONG
- J) $\frac{3}{16}$ " FILLED ALL AROUND
- K) $\frac{1}{4}$ " FILLET ALL AROUND
- L) $\frac{3}{16}$ " SINGLE - VEE 1 1/2" LONG
- M) $\frac{3}{16}$ " SINGLE - VEE, WELD 1 GRATING MEMBER TO FRAME EVERY 6"
- N) $\frac{5}{8}$ " SINGLE - VEE 2" LONG
- O) $\frac{3}{16}$ " SINGLE - VEE ALL AROUND



- NOTES:
1. MATERIAL TO BE HOT DIP GALVANIZED AFTER FABRICATION AS PER ASTM SPEC. A - 123.
 2. ANY DEVIATION OF GRATING DESIGN MUST BE APPROVED.

	APPROVED:  CHIEF, CONDUIT DIVISION	CITY OF BALTIMORE DEPARTMENT OF TRANSPORTATION CONDUIT DIVISION	ISSUED 8 / 2010	REVISED 10-9-86	REVISED
	DIRECTOR, DEPARTMENT OF TRANSPORTATION	6' x 17' - 6' x 9' PRECAST NETWORK TRANSFORMER MANHOLE - DETAILS	STANDARD NO. BC 825.15-3		SCALE : NONE