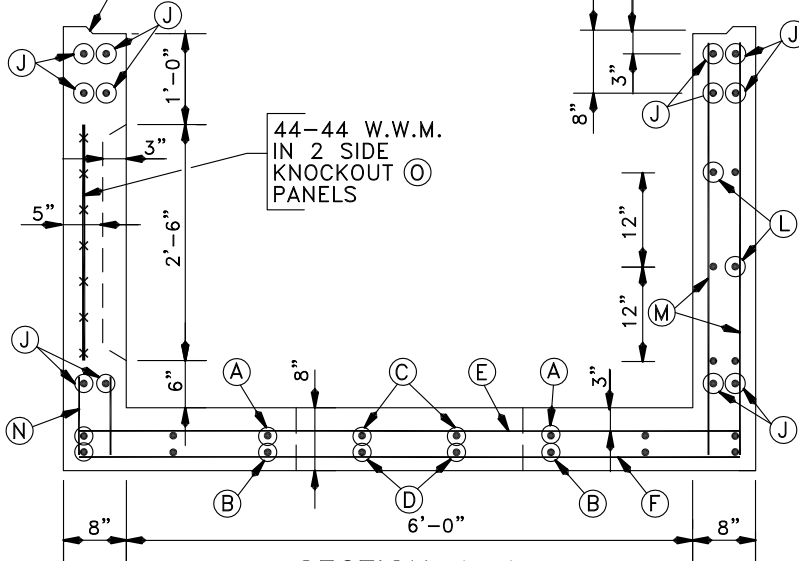
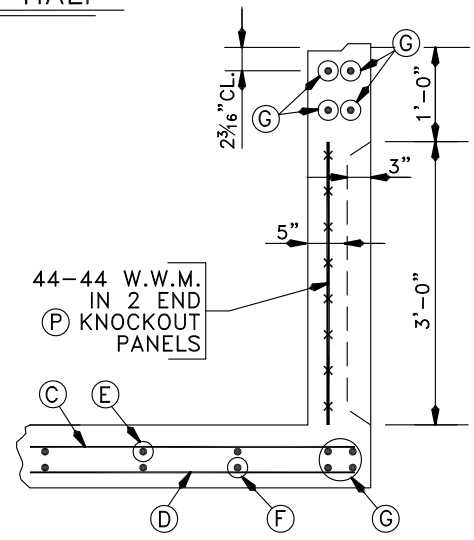


PLAN - BOTTOM HALF

JOINT DETAIL
SEE BC 826.08



SECTION 1-1



SECTION 2-2

GENERAL NOTES

TOP HALF (6'x8'x8' MANHOLE) SEE BC 827.02-1
 BAR SCHEDULE (6'x8'x8' MANHOLE) SEE BC 827.03
 KNOCKOUT DETAILS SEE BC 826.05
 INSERTS FOR RECESSED EXTENSION SEE BC 826.06
 ACCESSORIES FOR PRECAST MANHOLES SEE BC 826.08
 STANDARD ACCESS STACK SEE BC 825.11
 PRECAST RECESSED EXTENSION SEE BC 826.07-1

SPECIFICATIONS.....LATEST DEPARTMENT OF
 GENERAL SERVICES
 CONCRETE.....f_c=5,000 PSI-MIX AS
 APPROVED BY ENGINEER
 REINFORCING.....ASTM A615, GRADE 60
 WELDED WIRE MESH.....ASTM A185
 LOADING.....HS 25 TRUCK LOADING



APPROVED:
Rashed S. Baker
 CHIEF, CONDUIT DIVISION
Khalil Zare
 DIRECTOR, DEPARTMENT OF TRANSPORTATION

CITY OF BALTIMORE
 DEPARTMENT OF TRANSPORTATION
 CONDUIT DIVISION
 PRECAST MANHOLE
 6' x 8' x 8' HEADROOM
 BOTTOM HALF

ISSUED	REVISED	REVISED
8 / 2010		
STANDARD NO. BC 827.02-2		
SCALE: NONE	SHEET 2 OF 2	