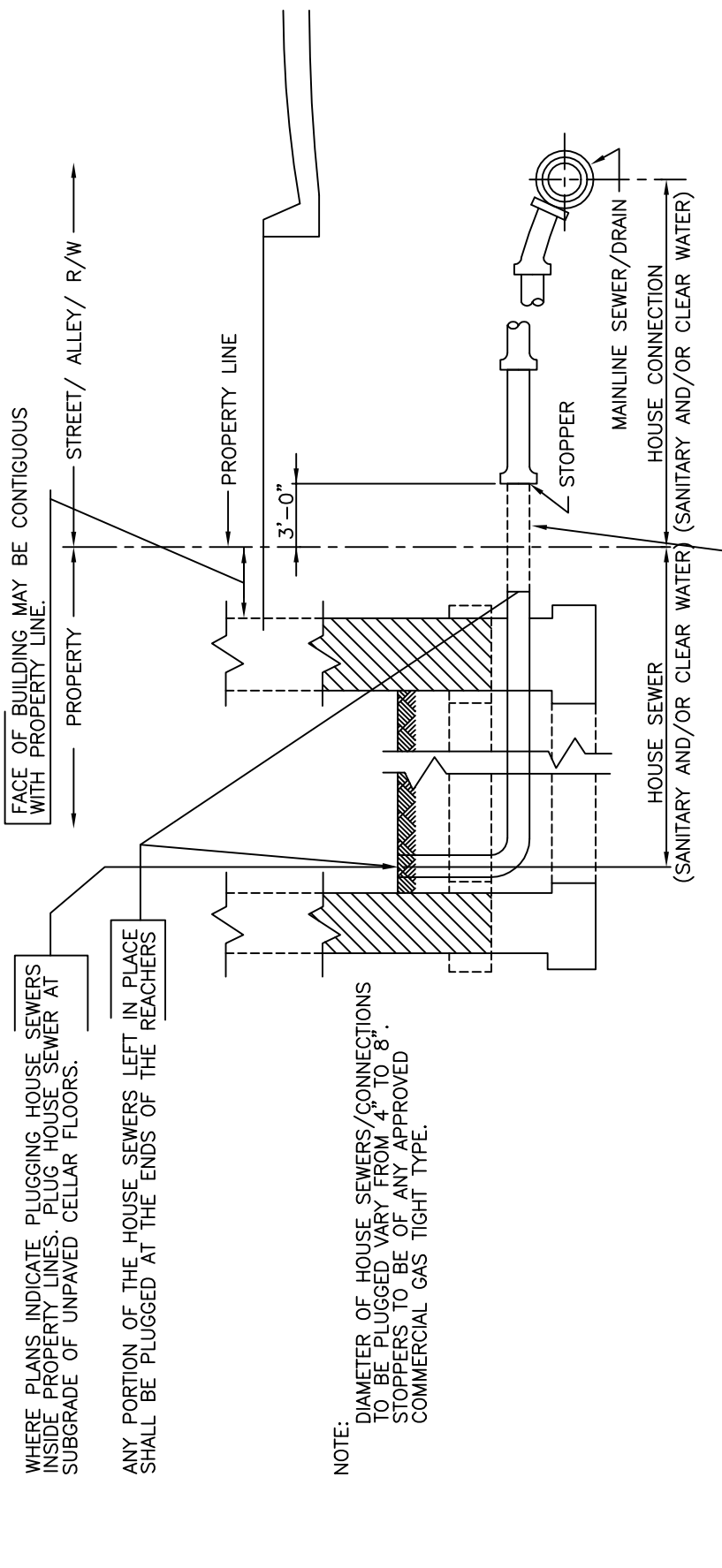


APPROVED :  
*[Signature]*  
 HEAD, BUREAU OF WATER AND WASTEWATER  
*[Signature]*  
 DIRECTOR, DEPARTMENT OF PUBLIC WORKS

CITY OF BALTIMORE  
 DEPARTMENT OF PUBLIC WORKS  
 BUREAU OF WATER AND WASTEWATER  
 TYPICAL PLUGGING DETAIL  
 SANITARY HOUSE CONNECTIONS

ISSUED	REVISED	REVISED
3 / 2008		
<b>STANDARD NO. BC 830.13</b>		
SCALE : NONE		SHEET 1 OF 1



FACE OF BUILDING MAY BE CONTIGUOUS WITH PROPERTY LINE.

WHERE PLANS INDICATE PLUGGING HOUSE SEWERS INSIDE PROPERTY LINES. PLUG HOUSE SEWER AT SUBGRADE OF UNPAVED CELLAR FLOORS.

ANY PORTION OF THE HOUSE SEWERS LEFT IN PLACE SHALL BE PLUGGED AT THE ENDS OF THE REACHERS

NOTE:  
 DIAMETER OF HOUSE SEWERS/CONNECTIONS TO BE PLUGGED VARY FROM 4" TO 8". STOPPERS TO BE OF ANY APPROVED COMMERCIAL GAS TIGHT TYPE.

WHERE PLANS INDICATE PLUGGING HOUSE CONNECTIONS OUTSIDE PROPERTY LINES. REMOVE LENGTH OF HOUSE CONNECTION OF PIPE AND INSTALL STOPPER LOCATION OF PLUGGED (STOPPER) END OF HOUSE CONNECTION TO BE NOT LESS THAN 3'-0" OUTSIDE OF PROPERTY LINE UNLESS SUITABLE BELL IS FOUND WITHIN THE 3'-0" MIN.

LEGEND

HOUSE CONNECTION TO BE PLUGGED OUTSIDE OF PROPERTY LINES.

HOUSE SEWER/HOUSE CONNECTION TO BE PLUGGED INSIDE PROPERTY LINES.

- M.H. - EXISTING MANHOLE
- F.C. - FRONT CONNECTION
- R.C. - REAR CONNECTION
- S.C. - SIDE CONNECTION
- (6.0') - APPROX. DEPTH OF CONNECTION AT PROPERTY LINE
- 0+17.0 - APPROX. LOCATION OF CONNECTION AT PROPERTY LINE OR SHOWN BY DIMENSION
- L.H. - LAMPHOLE

M.H. L.H.  
 #O##-#-#-#