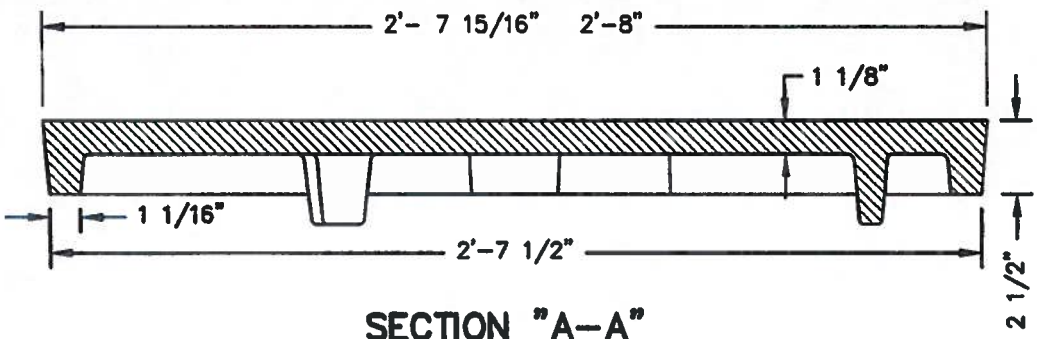


2" Raised Lettering  
Flush w/top Surface

Standard Diamond Grid

(2) Concealed  
Pickholes  
See Section  
BC 831.46 (2)


Stacking Lug (3)



SECTION "A-A"

For Std. 30" Manhole Frame  
See BC 831.43

NOTE: This Detail Replaces BC 831.26

	APPROVED: <i>Kumari Vind 7.2.14</i> HEAD, BUREAU OF WATER AND WASTEWATER	CITY OF BALTIMORE DEPARTMENT OF PUBLIC WORKS BUREAU OF WATER AND WASTEWATER	ISSUED	REVISED	REVISED
	<i>S. Dale Thomas 6.5.14</i> DIRECTOR, DEPARTMENT OF PUBLIC WORKS		6/2014		
	STANDARD SANITARY 30 IN. MANHOLE COVER		STANDARD NO BC 831.42		
			SCALE: NONE	SHEET 1 OF 1	