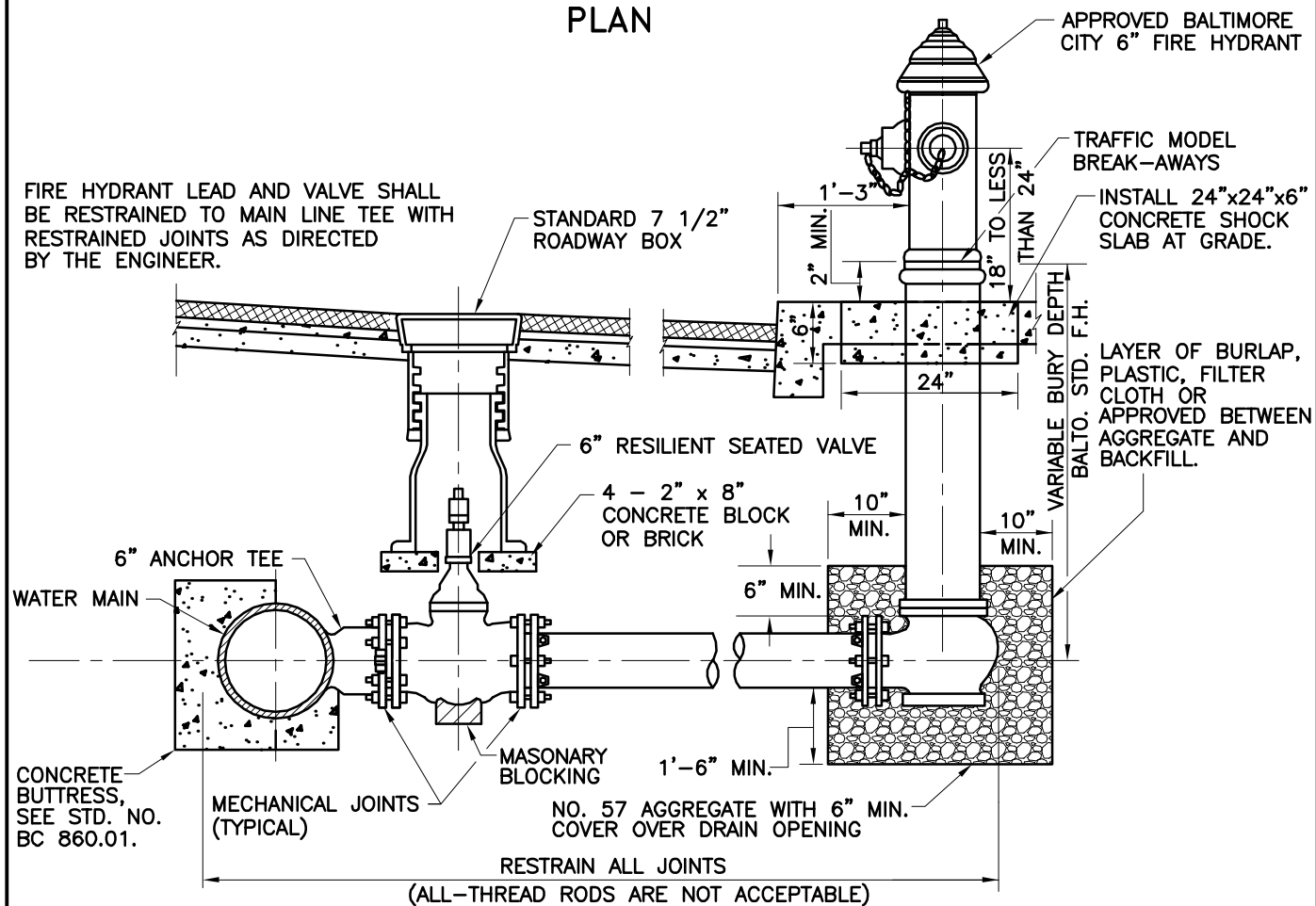



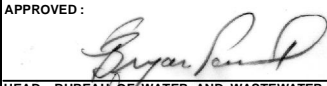

PLAN

FIRE HYDRANT LEAD AND VALVE SHALL BE RESTRAINED TO MAIN LINE TEE WITH RESTRAINED JOINTS AS DIRECTED BY THE ENGINEER.



- NOTES: 1. BALTIMORE STANDARD FIRE HYDRANT HAS VARIABLE BURY DEPTH, ANY VERTICAL ADJUSTMENT SHALL BE MADE USING BALTIMORE STD. FIRE HYDRANT EXTENSION PIECES.
2. CONCRETE SHALL BE MIX 3.

SECTION A-A

	APPROVED:  HEAD, BUREAU OF WATER AND WASTEWATER	CITY OF BALTIMORE DEPARTMENT OF PUBLIC WORKS BUREAU OF WATER AND WASTEWATER	ISSUED	REVISED	REVISED
	 DIRECTOR, DEPARTMENT OF PUBLIC WORKS		3 / 2008		
	STANDARD INSTALLATION OF FIRE HYDRANT WITH TEE AND VALVE (ROADWAY BOX)		STANDARD NO. BC 833.02		
			SCALE: NONE	SHEET 1 OF 1	