

ANGLE VALVE (ALL METERS)

I.P.T. X COPPER
ADAPTER PACKING
JOINT ADAPTER
5/8" & 3/4" M.

I.P.T. BRASS PIPE
4" COMPANION FLANGE
WITH I.P.T. TAP

METER SETTING AS PER STD. NOS. BC 836.01, 837.01, 839.01,
839.02, 840.01, 840.02, AND 840.03. SUPPORT SETTING
WITH MORTARED BRICK.

BALL ANGLE VALVE

ALL DETAILS SIMILAR

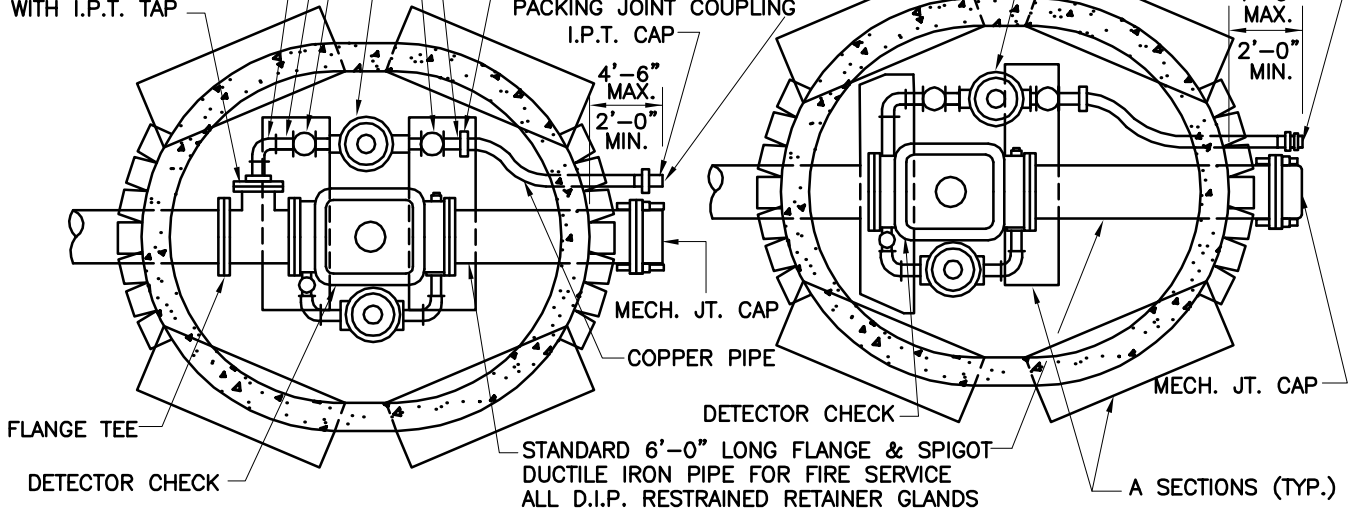
BRASS NIPPLE

I.P.T. X COPPER ADAPTER
PACKING JOINT COUPLING
I.P.T. CAP

SEE TABLE

4'-6"
MAX.
2'-0"
MIN.

4'-6"
MAX.
2'-0"
MIN.

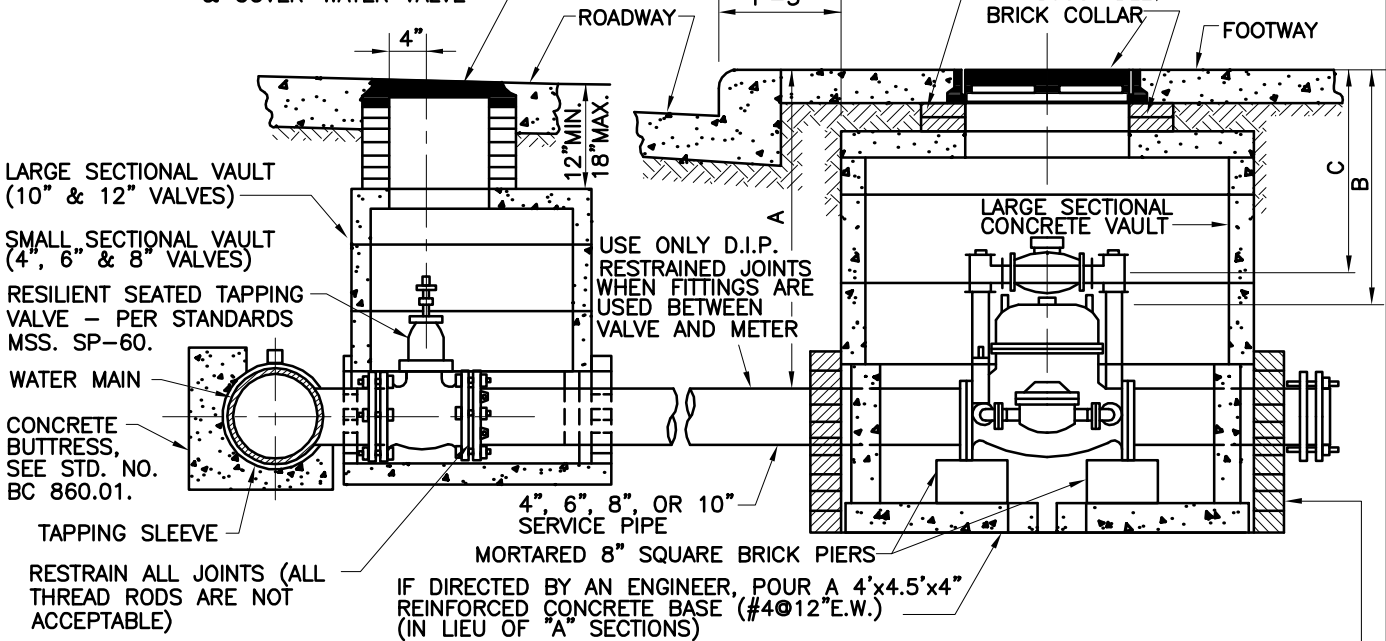


W.S.S. WITH TEE

W.S.S. SIDE CONNECTION

24" MANHOLE FRAME
& COVER-WATER VALVE

SEE STD. NOS.
BC 877.



LARGE SECTIONAL VAULT
(10" & 12" VALVES)

SMALL SECTIONAL VAULT
(4", 6" & 8" VALVES)

RESILIENT SEATED TAPPING
VALVE - PER STANDARDS
MSS. SP-60.

WATER MAIN
CONCRETE
BUTTRESS,
SEE STD. NO.
BC 860.01.

TAPPING SLEEVE

USE ONLY D.I.P.
RESTRAINED JOINTS
WHEN FITTINGS ARE
USED BETWEEN
VALVE AND METER

4", 6", 8", OR 10"
SERVICE PIPE

MORTARED 8" SQUARE BRICK PIERS

IF DIRECTED BY AN ENGINEER, POUR A 4'x4.5'x4"
REINFORCED CONCRETE BASE (#4@12"E.W.)
(IN LIEU OF "A" SECTIONS)

| D.C. METER | WATER SUPPLY SERVICE | | A | B | C |
|------------|----------------------|------------|--------|-------|------------------------------------|
| | SIDE CONN. | WITH TEE | | | |
| 4" | 3/4" - 1" | 1 1/2", 2" | 4'-9" | 3'-9" | AS PER STD. NOS. BC 836 TO 840. |
| 6" | 3/4"-1 1/2" | 2" | 5'-4" | 4' | |
| 8" | 3/4"-2" | N/A | 5'-10" | 4' | |
| 10" | 3/4"-2" | N/A | 6' | 4' | |

OPENING AROUND PIPE TO BE
BRICKED UP ON THE OUTSIDE OF
VAULT AFTER METER IS INSTALLED.



APPROVED:

HEAD, BUREAU OF WATER AND WASTEWATER

DIRECTOR, DEPARTMENT OF PUBLIC WORKS

CITY OF BALTIMORE
DEPARTMENT OF PUBLIC WORKS
BUREAU OF WATER AND WASTEWATER

STANDARD INSTALLATION OF
4", 6", 8", 10", & 12" FIRE SUPPLY SERVICES
WITH WATER SUPPLY SERVICE
(NO OUTSIDE FIRE HYDRANTS) WITH TAPPING
SLEEVE AND VALVE (SECTIONAL VAULT)

ISSUED

REVISED

REVISED

3 / 2008

STANDARD NO.
BC 851.02

SCALE: NONE

SHEET 1 OF 1