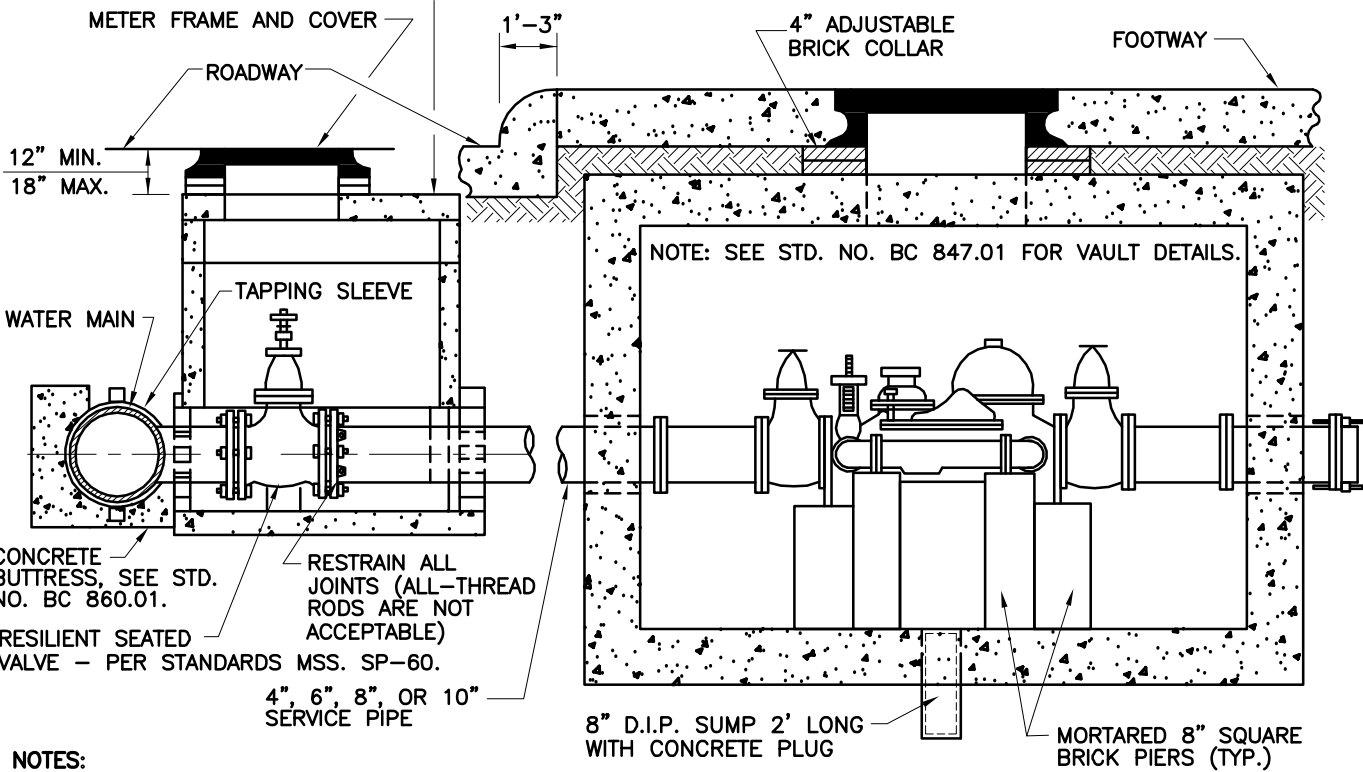


PLAN (METER VAULT ONLY)

LARGE SECTIONAL VAULT (10" & 12")  
 SMALL SECTIONAL VAULT (4", 6", & 8")



ELEVATION

- NOTES:
1. CONCRETE SHALL BE MIX 3.
  2. INSTALL A MIN. OF 8 DIAMETERS OF STRAIGHT PIPE ON THE INLET SIDE OF THE METER AND SET METER LEVEL.



APPROVED: *[Signature]*  
 HEAD, BUREAU OF WATER AND WASTEWATER  
*[Signature]*  
 DIRECTOR, DEPARTMENT OF PUBLIC WORKS

CITY OF BALTIMORE  
 DEPARTMENT OF PUBLIC WORKS  
 BUREAU OF WATER AND WASTEWATER

STANDARD INSTALLATION OF  
 4", 6", 8", 10", & 12" WATER SUPPLY SERVICES  
 (4", 6", 8", 10", & 12" COMBINED SERVICES)  
 WITH TAPPING SLEEVE AND VALVE  
 (SECTIONAL VAULT)

ISSUED	REVISED	REVISED
3 / 2008		
<b>STANDARD NO. BC 852.02</b>		
SCALE: NONE		SHEET 1 OF 1