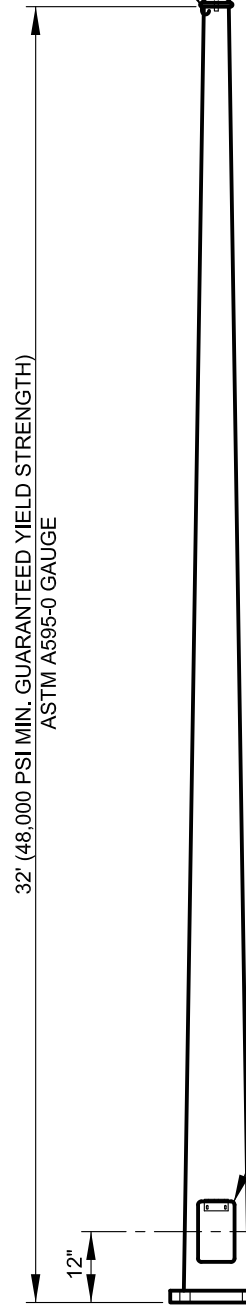
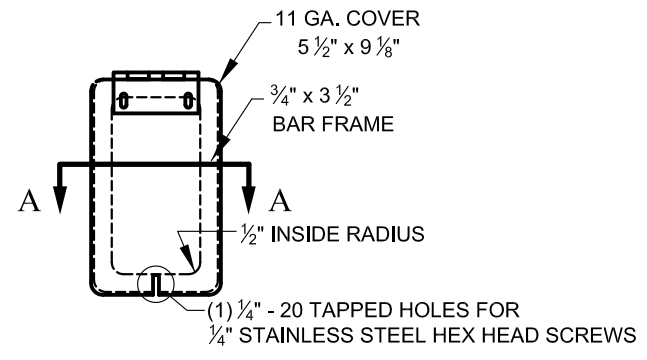


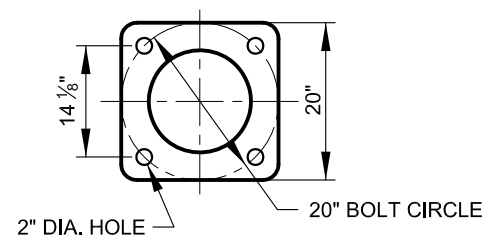
J HOOK
REMOVABLE POLE TOP



32' (48,000 PSI MIN. GUARANTEED YIELD STRENGTH)
ASTM A595-0 GAUGE



HANDHOLE COVER
SCALE: 1 1/2" = 1'-0"



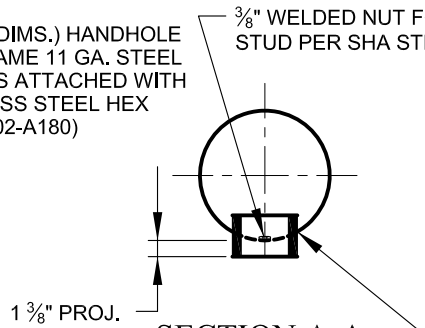
POLE BASE
SCALE: 1/2" = 1'-0"

A POLE GROUNDING LUG SHALL BE PROVIDED AT THE HANDHOLE

5" x 9" (OUTSIDE DIMS.) HANDHOLE REINFORCED FRAME 11 GA. STEEL HINGED COVER IS ATTACHED WITH (1) 1/4"-20 STAINLESS STEEL HEX HEAD SCREW (P02-A180)

3/8" WELDED NUT FOR STUD PER SHA STD. 818.11

(4) ANCHOR BOLTS SHALL BE SUPPLIED WITH EACH POLE. EACH BOLT SHALL BE FURNISHED WITH 2-HEX NUTS, AND 2- FLAT WASHERS REFER TO STANDARD ANCHOR BOLTS DETAIL



**SECTION A-A
HANDHOLE DETAIL**
SCALE: 3/4" = 1'-0"

5/16" FOR 3 GA.
3/8" FOR #1/0 GA.

HEAVY DUTY STRAIN POLE
N.T.S.

POLE SHAFT DIMENSION SCHEDULE		
HEIGHT	BASE O.D.	TOP O.D.
32 FEET	13.00"	8.52"



APPROVED:
Primal Dev...
DIVISION CHIEF, TRANSPORTATION ENGINEERING AND CONSTRUCTION
Khali Z...
DIRECTOR, DEPARTMENT OF TRANSPORTATION

CITY OF BALTIMORE
DEPARTMENT OF TRANSPORTATION
TRANSPORTATION ENGINEERING AND CONSTRUCTION

HEAVY DUTY STEEL STRAIN POLE

ISSUED	REVISED	REVISED
8 / 2010		
STANDARD NO. BC 880.02		
SCALE : NONE	SHEET 1 OF 1	