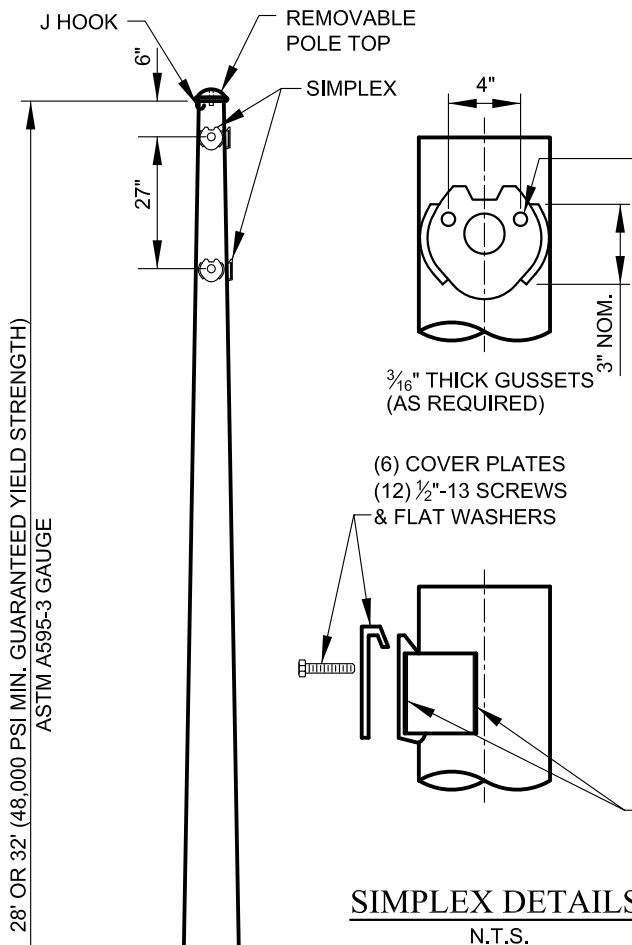
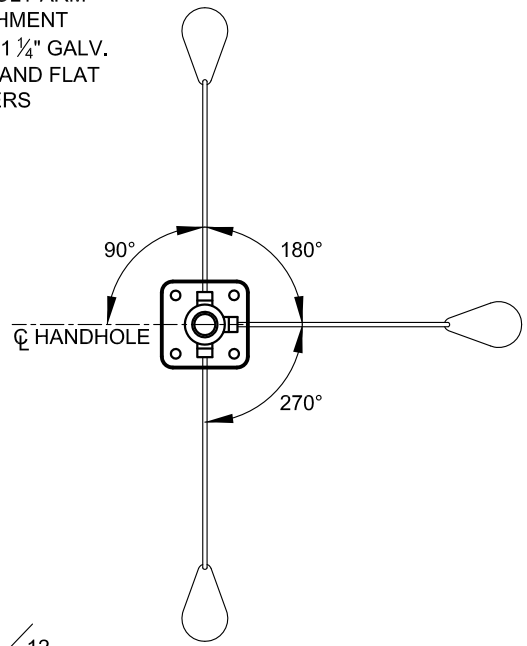


POLE SHAFT DIMENSION SCHEDULE		
HEIGHT	BASE O.D.	TOP O.D.
28 FEET	11.00"	7.08"
32 FEET	11.00"	6.52"



TWO BOLT ARM ATTACHMENT
1/2"-13 x 1 1/4" GALV. BOLTS AND FLAT WASHERS



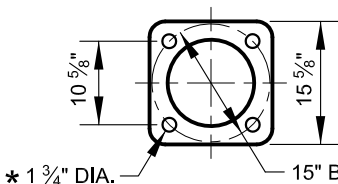
ARM LOCATION DETAIL
N.T.S.

SIMPLEX DETAILS
N.T.S.

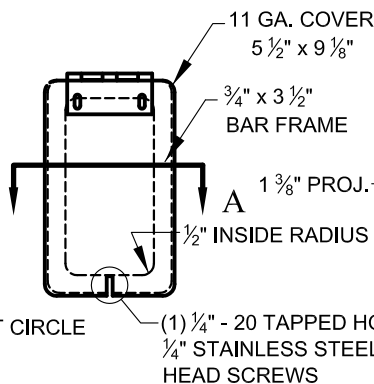
NOTES:

1. THREE SETS OF DOUBLE BOLT POLE SIMPLEX FITTINGS SHALL BE LOCATED AT 90°, 180°, AND 270° CLOCKWISE FROM HANDHOLE ON 28' AND 32' STRAIN POLES.
2. SIMPLEX FITTINGS ARE NOT REQUIRED ON 24' STRAIN POLES.
3. A COVER PLATE SHALL BE SUPPLIED FOR ALL SIMPLEX FITTINGS.
4. A POLE GROUNDING LUG SHALL BE PROVIDED AT THE HANDHOLE.

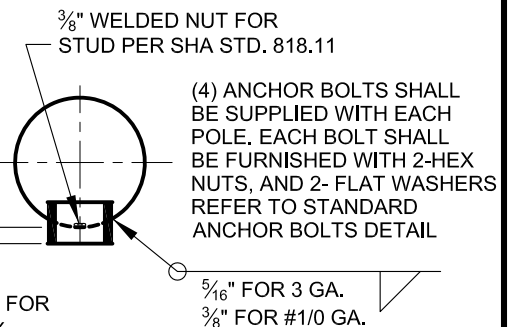
STRAIN POLE
N.T.S.



POLE BASE
SCALE: 1/2" = 1'-0"



HANDHOLE COVER
SCALE: 1 1/2" = 1'-0"



SECTION A-A
HANDHOLE DETAIL
SCALE: 3/4" = 1'-0"



APPROVED:
Primal Dev...
DIVISION CHIEF, TRANSPORTATION ENGINEERING AND CONSTRUCTION
Khalil Z...
DIRECTOR, DEPARTMENT OF TRANSPORTATION

CITY OF BALTIMORE
DEPARTMENT OF TRANSPORTATION
TRANSPORTATION ENGINEERING AND CONSTRUCTION
**JOINT USE
STEEL STRAIN POLE**

ISSUED	REVISED	REVISED
8 / 2010		
STANDARD NO. BC 880.03		
SCALE : NONE	SHEET 1 OF 1	