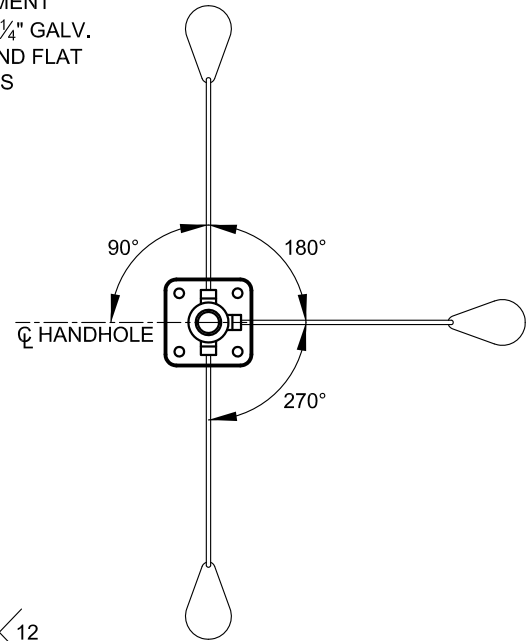
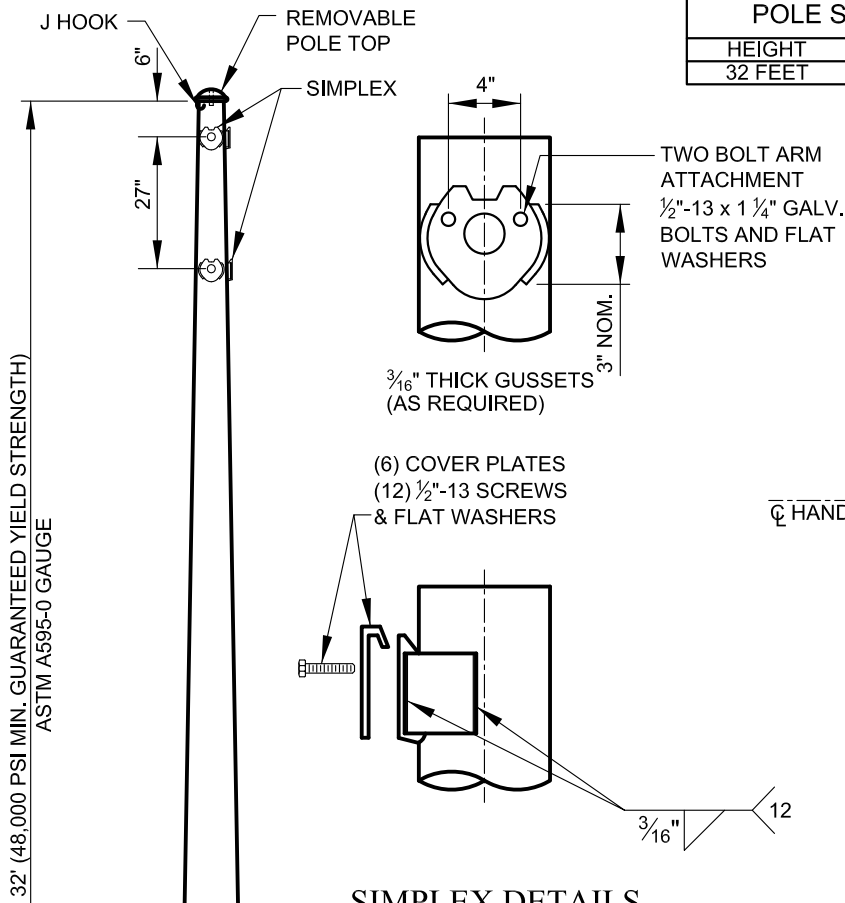


POLE SHAFT DIMENSION SCHEDULE		
HEIGHT	BASE O.D.	TOP O.D.
32 FEET	13.00"	8.52"

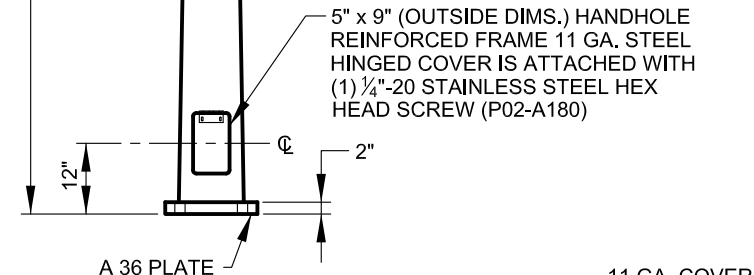


**ARM LOCATION DETAIL**  
N.T.S.

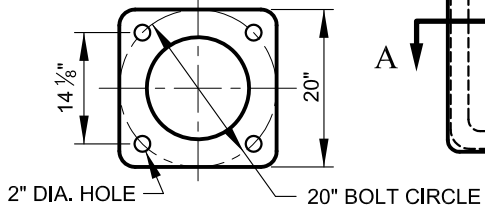
**SIMPLEX DETAILS**  
N.T.S.

**NOTES:**

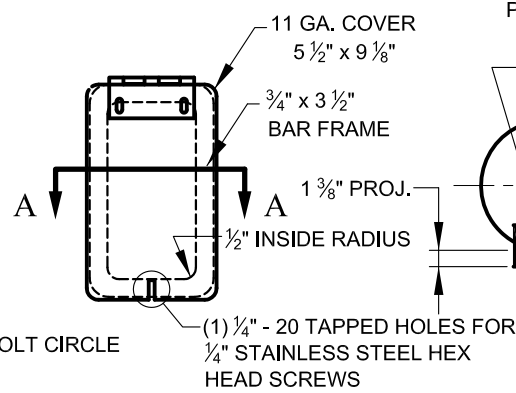
- THREE SETS OF DOUBLE BOLT POLE SIMPLEX FITTINGS SHALL BE LOCATED AT 90°, 180°, AND 270° CLOCKWISE FROM HANDHOLE ON 28' AND 32' STRAIN POLES.
  - SIMPLEX FITTINGS ARE NOT REQUIRED ON 24' STRAIN POLES.
  - A COVER PLATE SHALL BE SUPPLIED FOR ALL SIMPLEX FITTINGS.
  - A POLE GROUNDING LUG SHALL BE PROVIDED AT THE HANDHOLE.
- 3/8" WELDED NUT FOR STUD PER SHA STD. 818.11



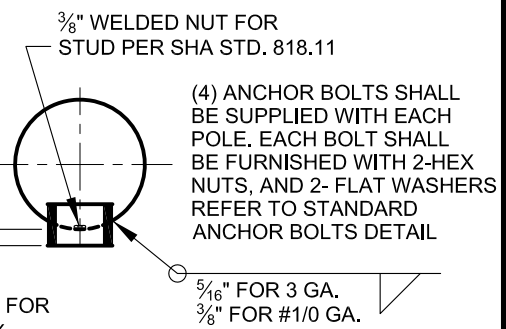
**STRAIN POLE**  
N.T.S.



**POLE BASE**  
SCALE: 1/2" = 1'-0"



**HANDHOLE COVER**  
SCALE: 1 1/2" = 1'-0"



**SECTION A-A**  
**HANDHOLE DETAIL**  
SCALE: 3/4" = 1'-0"



APPROVED:  
*Primal Dev...*  
DIVISION CHIEF, TRANSPORTATION ENGINEERING AND CONSTRUCTION  
*Khalil Z...*  
DIRECTOR, DEPARTMENT OF TRANSPORTATION

**CITY OF BALTIMORE**  
**DEPARTMENT OF TRANSPORTATION**  
**TRANSPORTATION ENGINEERING AND CONSTRUCTION**

**HEAVY DUTY JOINT USE**  
**STEEL STRAIN POLE**

ISSUED	REVISED	REVISED
8 / 2010		
<b>STANDARD NO.</b> BC 880.04		
SCALE: NONE	SHEET 1 OF 1	