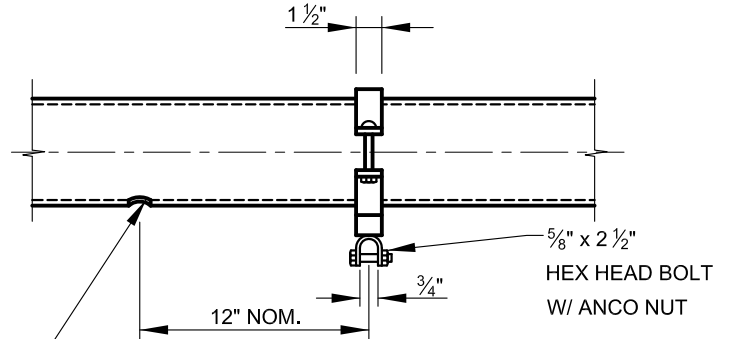
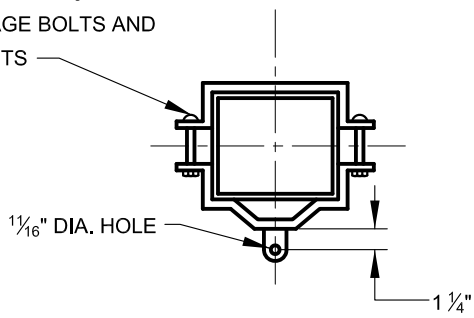
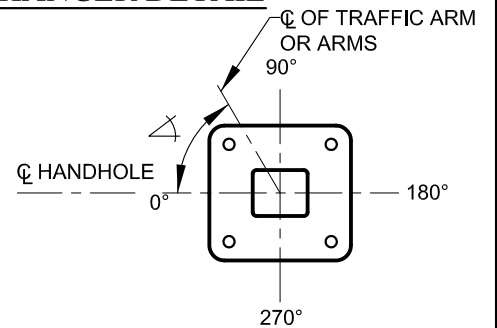


¼" THICK CLAMP AND
CLEVIS W/ 2 - ⅝" DIA.
CARRIAGE BOLTS AND
HEX NUTS



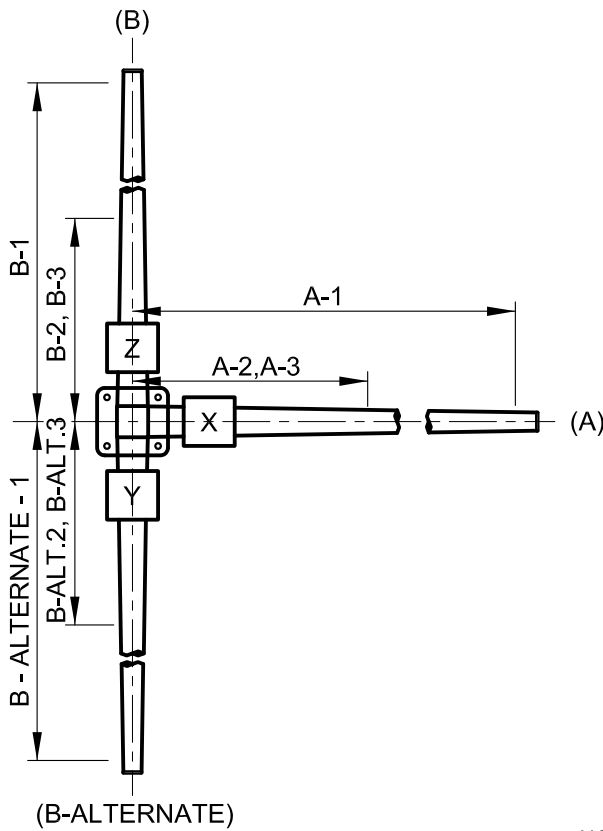
1 ⅜" DIA. HOLE
WITH 1" I.D. GROMMET

SIGNAL HANGER DETAIL


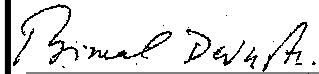
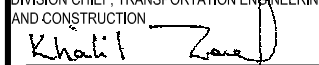


ARM LOCATION DETAIL (TYP.)

ALL ANGLES MEASURED
CLOCKWISE FROM ϕ HANDHOLE
LOCATION (@ 0°)



NOTE:
A-1, A-2, A-3.... THRU B-ALTERNATE INDICATE SIGNAL
HANGER LOCATION AND LENGTH OF MAST ARM DIMENSIONS.
REFER TO CHART ON PLANS FOR DIMENSIONS.

	APPROVED:  DIVISION CHIEF, TRANSPORTATION ENGINEERING AND CONSTRUCTION  DIRECTOR, DEPARTMENT OF TRANSPORTATION	CITY OF BALTIMORE DEPARTMENT OF TRANSPORTATION TRANSPORTATION ENGINEERING AND CONSTRUCTION	ISSUED 8 / 2010	REVISED	REVISED
	INNER HARBOR TYPE SQUARE STEEL POLES & MAST ARMS		STANDARD NO. BC 880.09-2		
			SCALE : NONE	SHEET 2 OF 4	